



Geotechnisches Ingenieurbüro
Prof. Fecker und Partner GmbH

Messprogramm
ETIBS® - Optischer Bohrlochscanner
ABF - Akustisches Bohrlochfernsehen

Erkundungsobjekt
Rhein-Main-Link, PFA HE3

Auftraggeber: Bohr- ArGe 3-5
Bohrung: P07-Phh-BK-0010
Ort: Pohlheim
Auftragsnummer: e-3679

Teufenmaßstab
1:10


Koordinaten
Rechtswert:
Hochwert:
Höhe ü. NN:

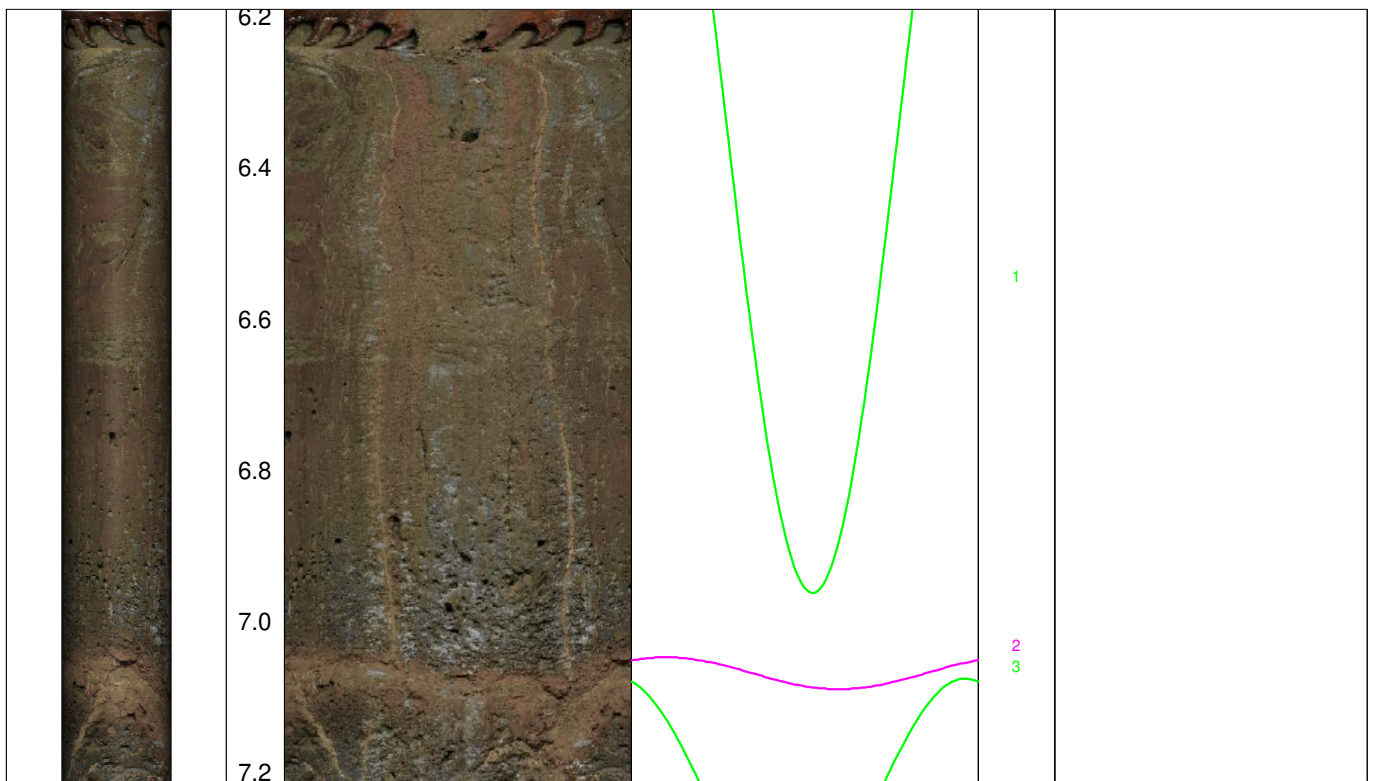
Messbezugspunkt: GOK

Messdatum:	01.12.2025	Bohrlochdurchmesser:	146 mm
Bohrteufe:	40.50 m (lt. BM)	Richtung der Bohrung:	vertikal
Messintervall:	6.19 m - 39.22 m (33.03 m)	Quelldatei:	Phh0010.blk / Phh0010.log
Verrohrung bis:	6.21 m	Messingenieur:	Hr. Newrzella
Wasserstand:	20.47 m	Bearbeiter:	Hr. Ertelt

Bemerkungen: Messintervall ETIBS: 6.19 m - 20.47 m (14.28 m)
Messintervall ABF: 20.47 m - 39.22 m (18.75 m)

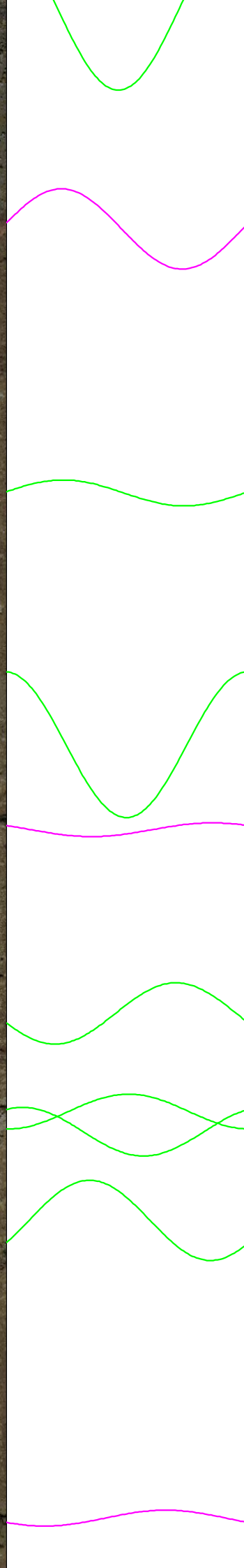
Trennflächen : schwarz - Schichtung / Schieferung
blau - Schrägschichtung
magenta - Klüfte
grün - Klüfte nur z. T. erkennbar

Pseudokern 	[m]	Bohrlochabwicklung					Trennflächenabwicklung					Nr.	Bemerkung
		N	O	S	W	N	N	O	S	W	N		





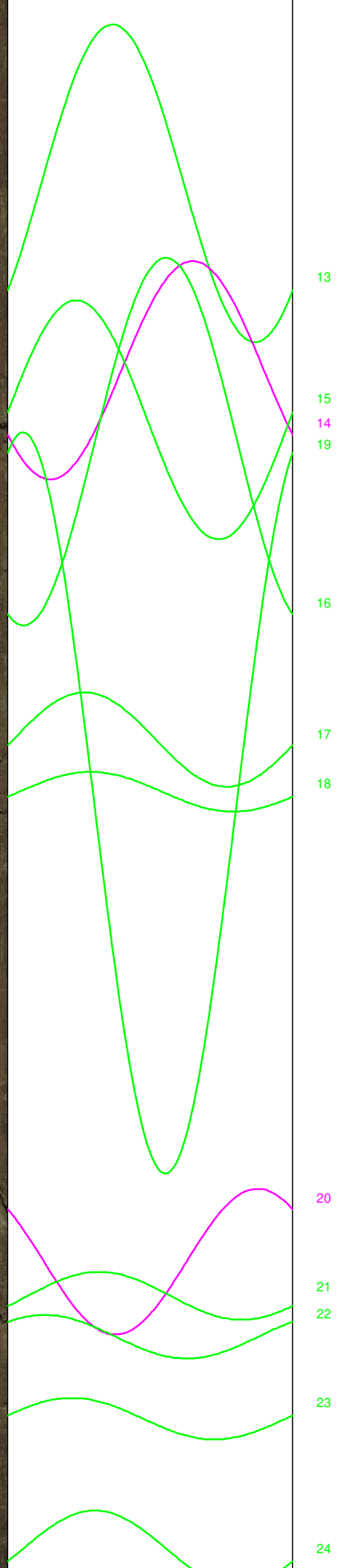
7.4
7.6
7.8
8.0
8.2
8.4
8.6
8.8
9.0
9.2
9.4
9.6
9.8
10.0



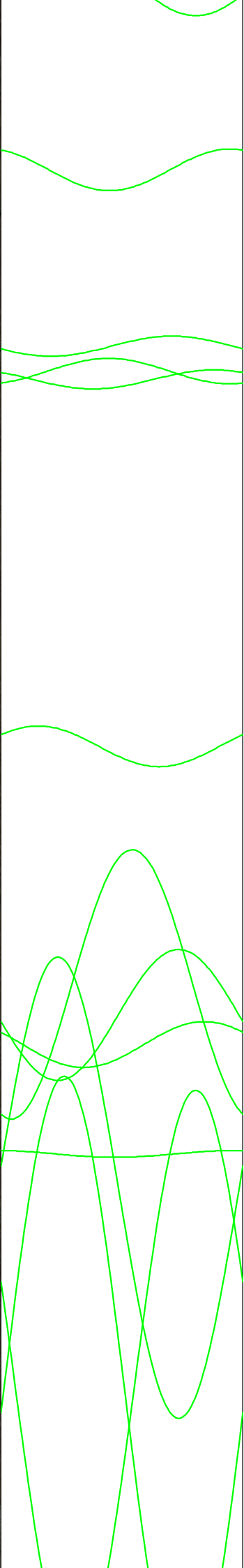
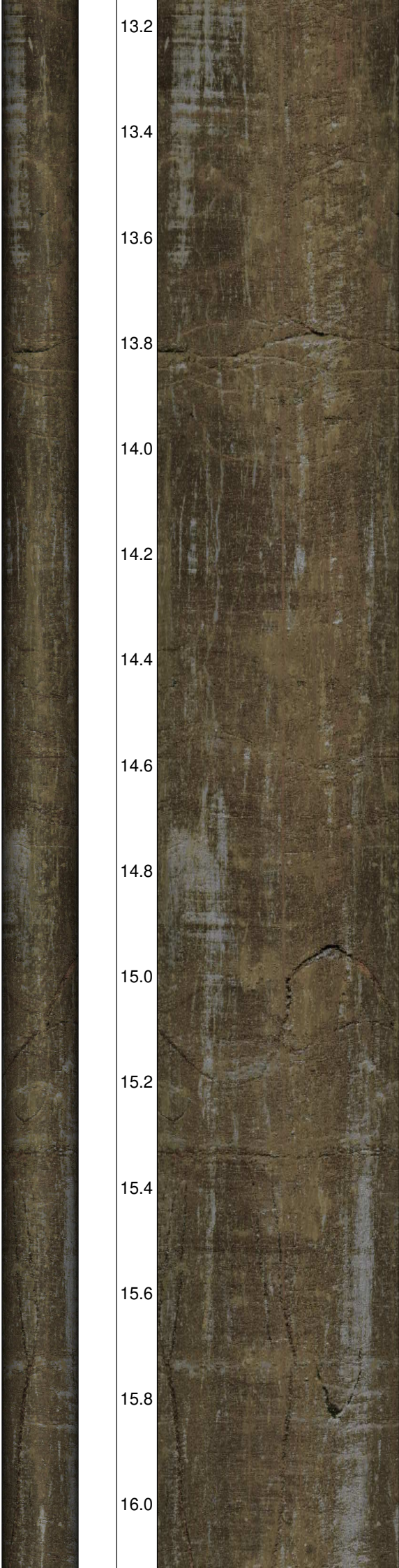
4
5
6
7
8
9
10
11
12



10.2
10.4
10.6
10.8
11.0
11.2
11.4
11.6
11.8
12.0
12.2
12.4
12.6
12.8
13.0

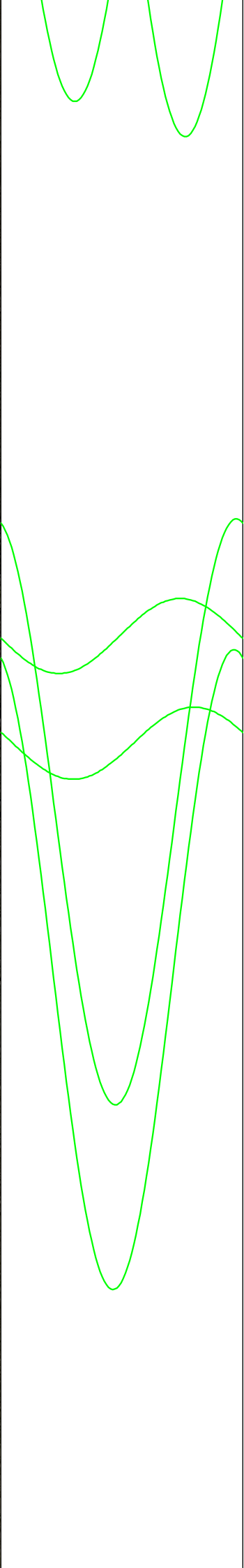
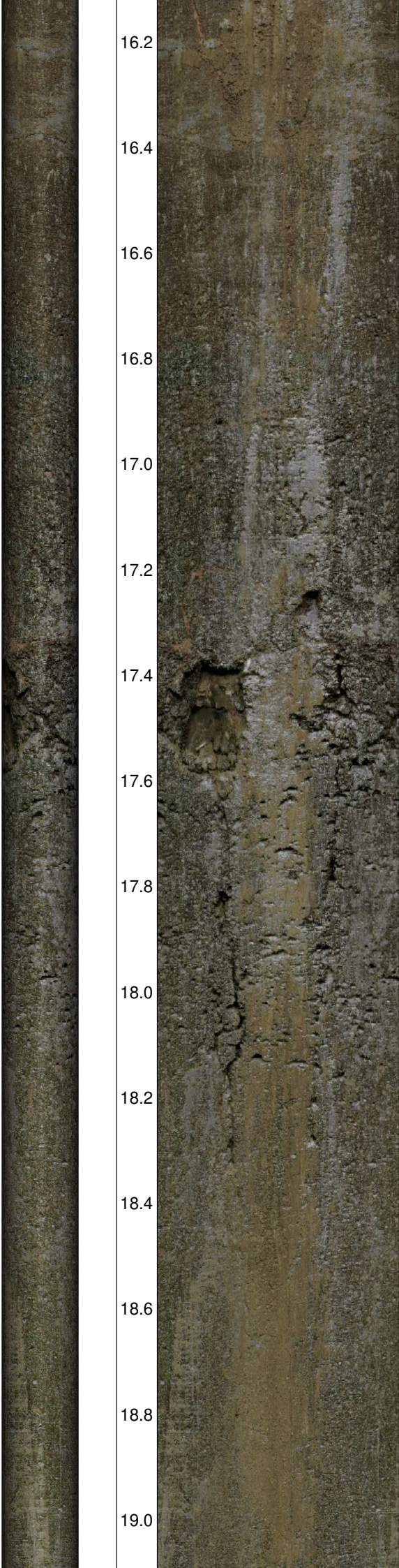


13.2
13.4
13.6
13.8
14.0
14.2
14.4
14.6
14.8
15.0
15.2
15.4
15.6
15.8
16.0



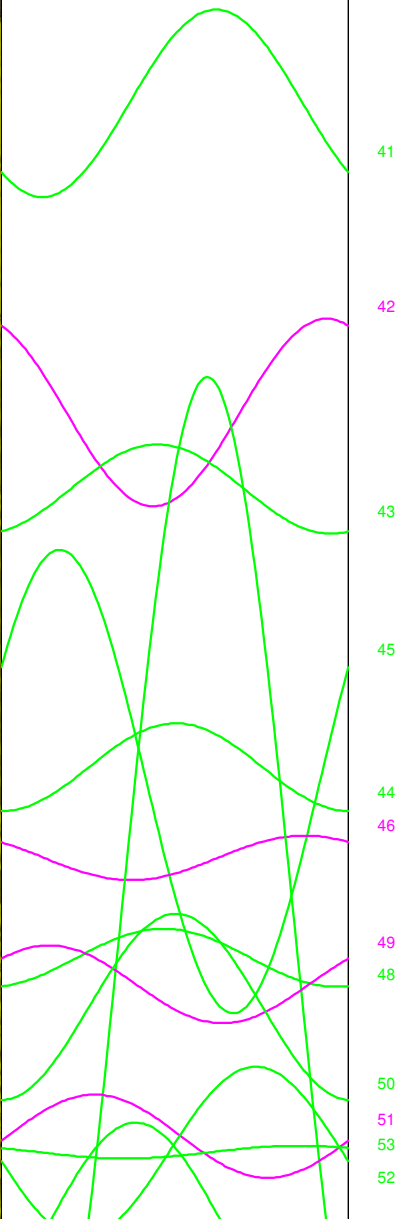
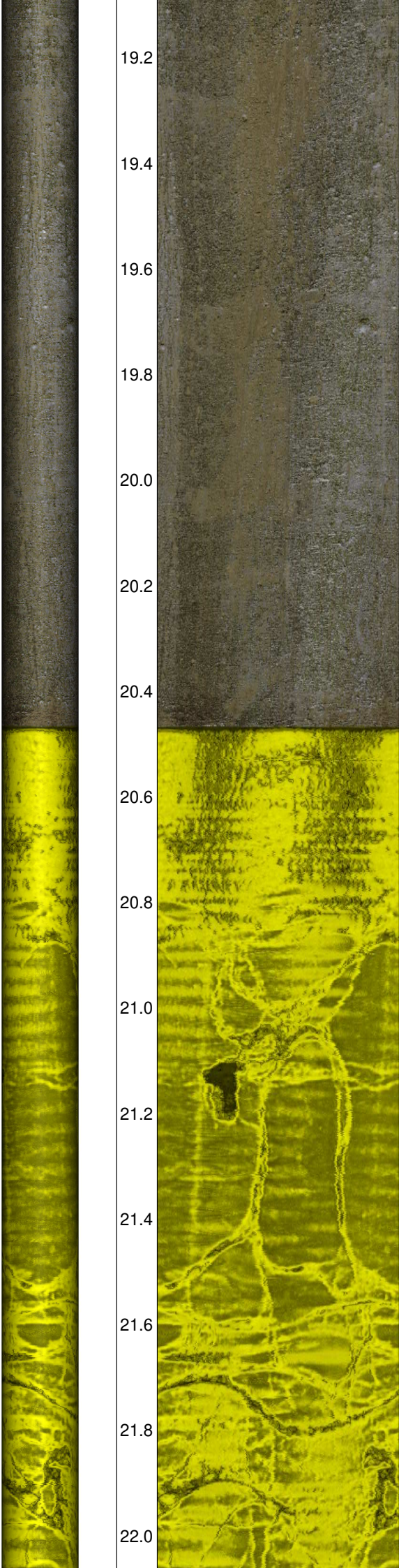
25
26
28
27
29
31
32
30
33
34
35
36

16.2
16.4
16.6
16.8
17.0
17.2
17.4
17.6
17.8
18.0
18.2
18.4
18.6
18.8
19.0



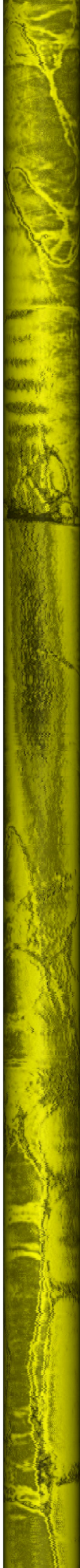
39
37
40
38

19.2
19.4
19.6
19.8
20.0
20.2
20.4
20.6
20.8
21.0
21.2
21.4
21.6
21.8
22.0



Wasserspiegel

41
42
43
45
44
46
49
48
50
51
53
52



22.2

22.4

22.6

22.8

23.0

23.2

23.4

23.6

23.8

24.0

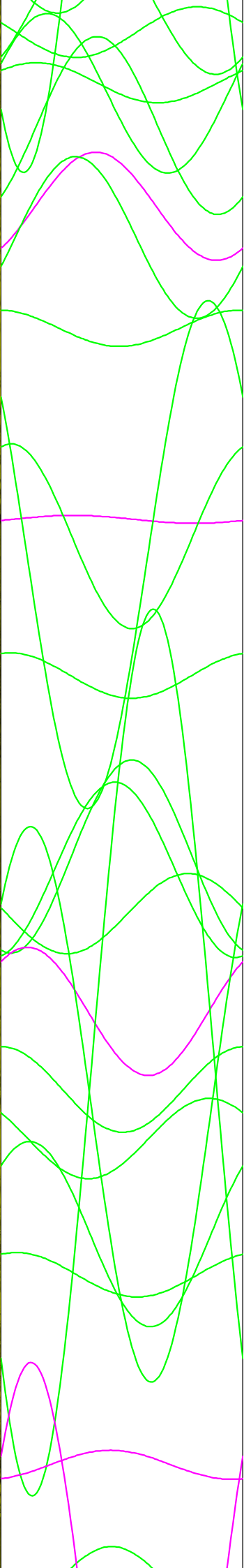
24.2

24.4

24.6

24.8

25.0



55

54

57

56

47

58

59

60

61

64

63

62

65

72

68

66

67

69

71

73

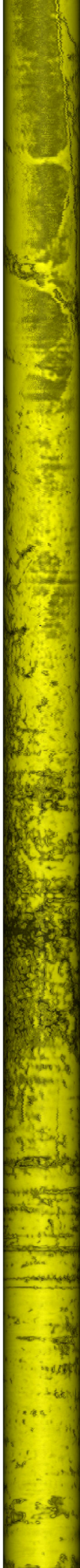
74

75

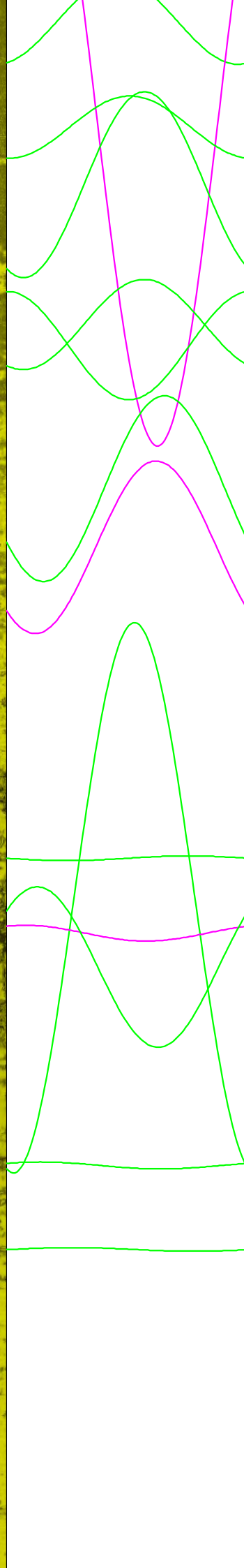
70

78

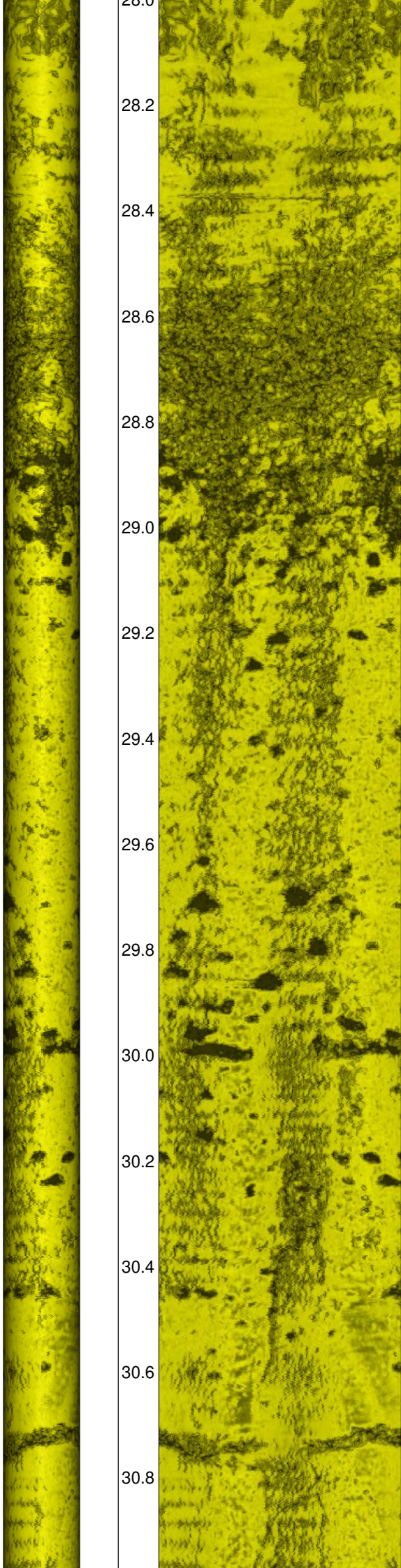
76



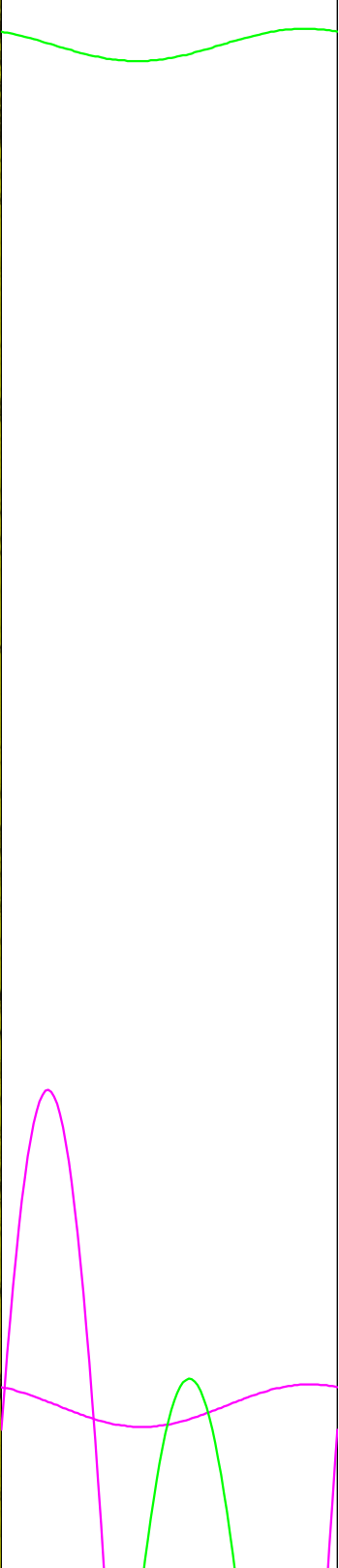
25.2
25.4
25.6
25.8
26.0
26.2
26.4
26.6
26.8
27.0
27.2
27.4
27.6
27.8
28.0



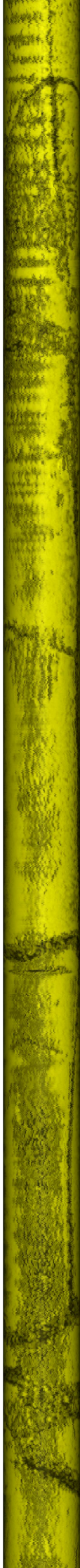
77
79
80
82
81
83
84
85
88
87
89
86
90



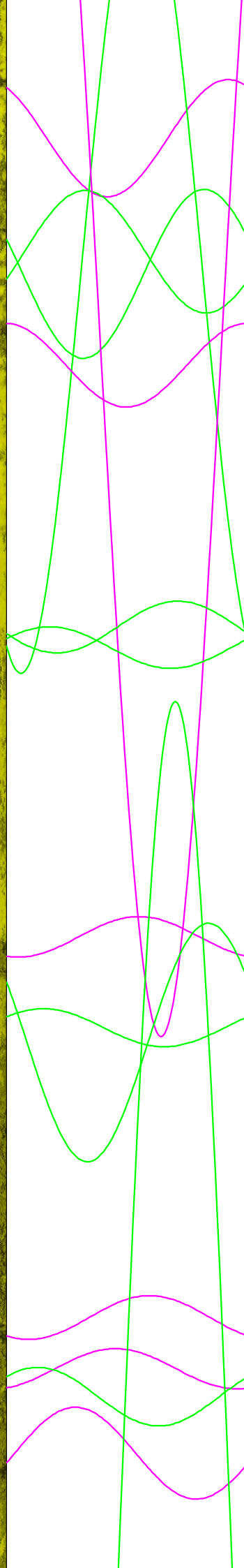
28.0
28.2
28.4
28.6
28.8
29.0
29.2
29.4
29.6
29.8
30.0
30.2
30.4
30.6
30.8



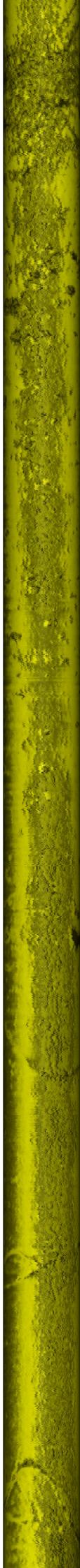
91
92
97



31.0
31.2
31.4
31.6
31.8
32.0
32.2
32.4
32.6
32.8
33.0
33.2
33.4
33.6
33.8



93
96
94
98
99
100
95
101
103
102
104
106
105
107



34.0
34.2
34.4
34.6
34.8
35.0
35.2
35.4
35.6
35.8
36.0
36.2
36.4
36.6
36.8



109
108
111
110
112
114
113
115

