


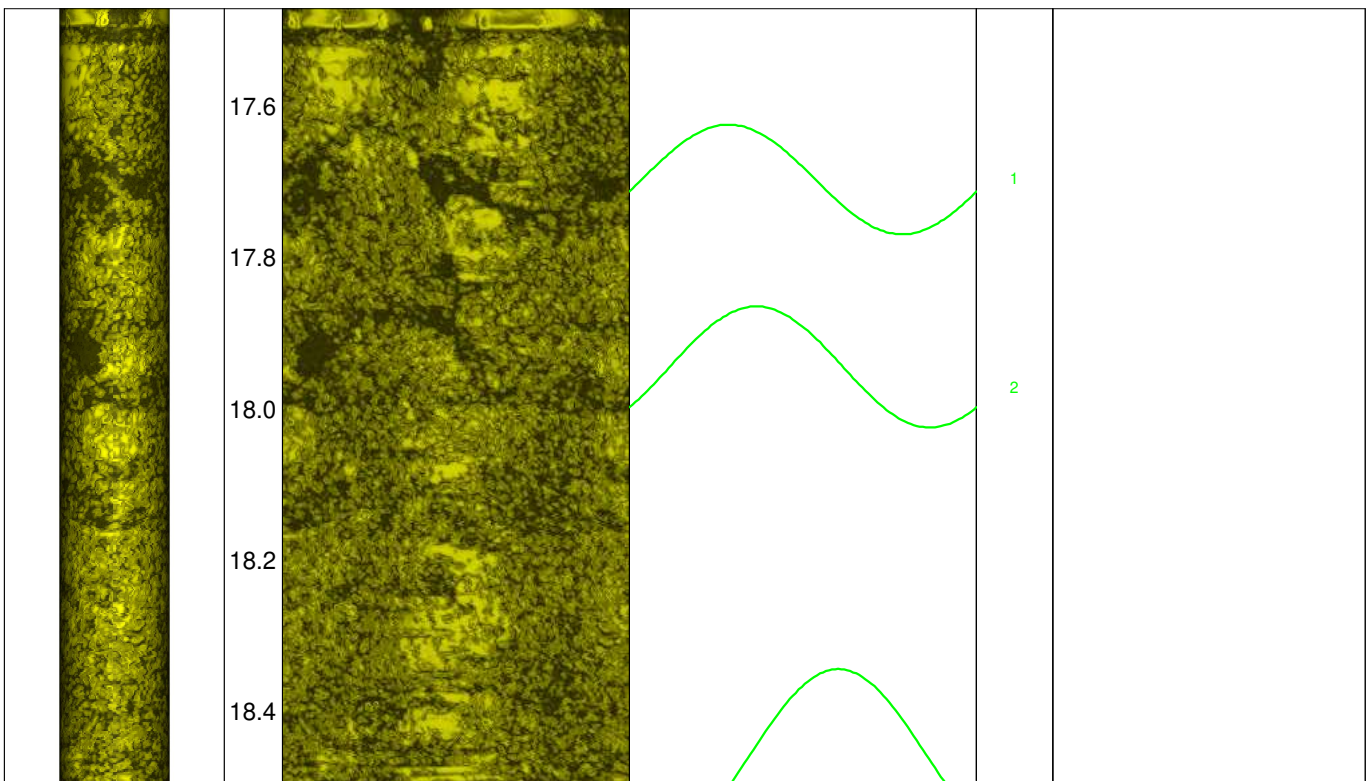


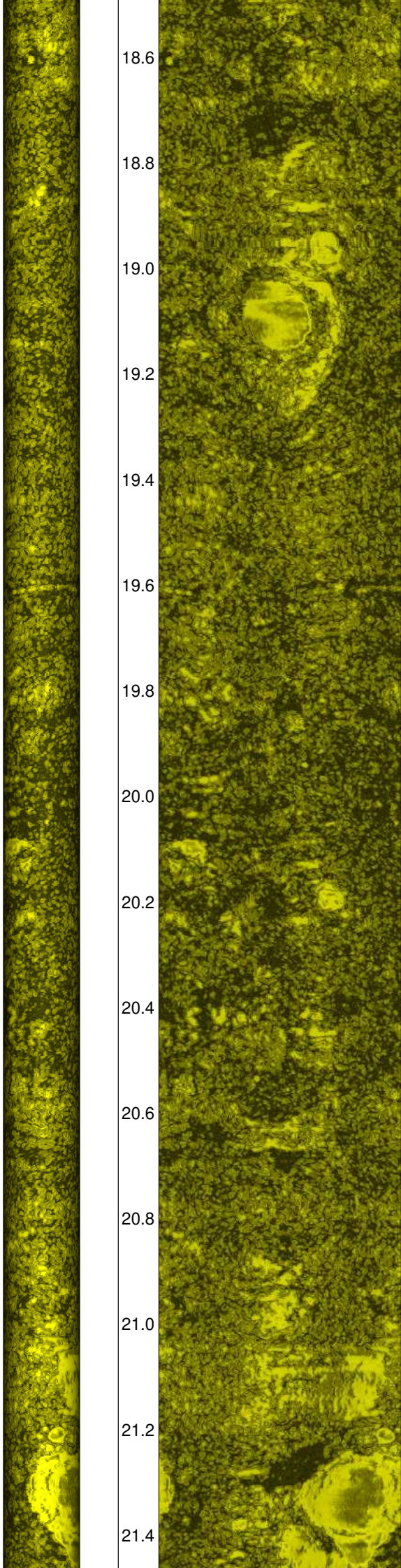
Geotechnisches Ingenieurbüro
Prof. Fecker und Partner GmbH

Messprogramm		Erkundungsobjekt	
ABF Akustisches Bohrlochfernsehen		Rhein-Main-Link, PFA HE3	
Auftraggeber: Bohr- ArGe 3-5 Bohrung: P07-Fer-BK-0123 Ort: Fernwald Auftragsnummer: e-3679		Teufenmaßstab 1:10	Koordinaten Rechtswert: Hochwert: Höhe ü. NN:
		Messbezugspunkt: GOK	
Messdatum:	23.02.2026	Bohrlochdurchmesser:	146 mm
Bohrteufe:	40.00 m (lt. BM)	Richtung der Bohrung:	vertikal
Messintervall:	17.47 m - 39.99 m (22.52 m)	Quelldatei:	Fer-0123.log
Verrohrung bis:	17.49 m	Messingenieur:	Hr. Üzstöke
Wasserstand:	8.62 m	Bearbeiter:	Hr. Dr. Monsees

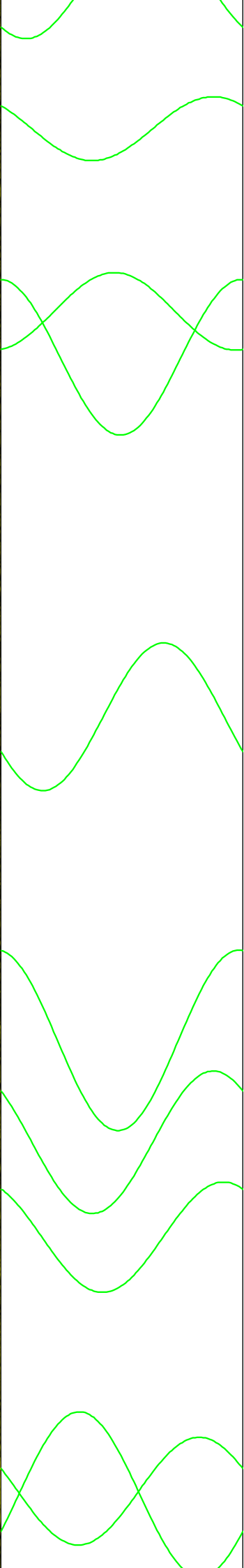
Bemerkungen:	Bohrlochscan im Vulkanit, daher keine Verwendung der Kategorie Schichtung / Schieferung
Trennflächen :	schwarz - Schichtung / Schieferung magenta - Klüfte grün - Klüfte nur z. T. erkennbar

Pseudokern 	[m]	Bohrlochabwicklung					Trennflächenabwicklung					Nr.	Bemerkung
		N	O	S	W	N	N	O	S	W	N		

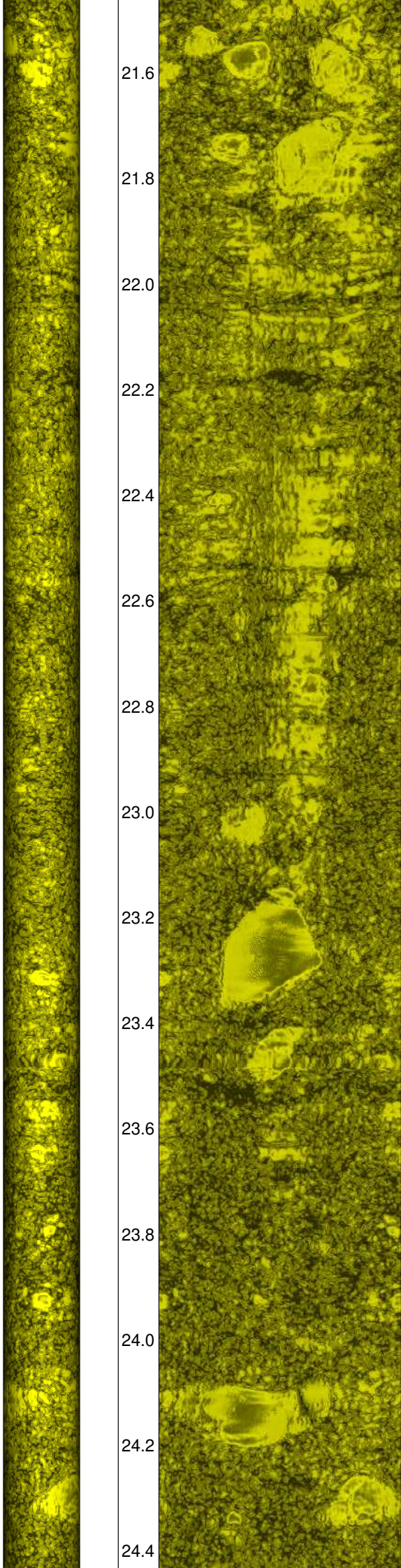




18.6
18.8
19.0
19.2
19.4
19.6
19.8
20.0
20.2
20.4
20.6
20.8
21.0
21.2
21.4



3
4
6
5
7
8
9
10
11
12



21.6

21.8

22.0

22.2

22.4

22.6

22.8

23.0

23.2

23.4

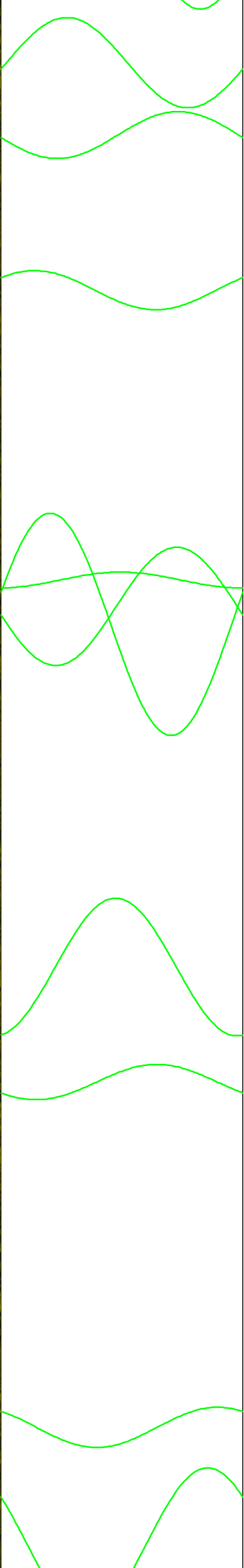
23.6

23.8

24.0

24.2

24.4



13

14

15

16

18

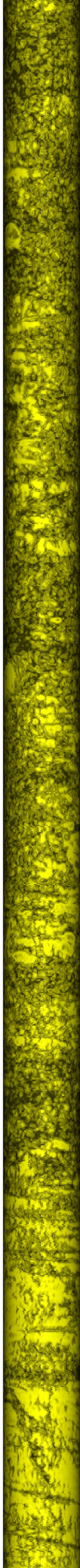
17

19

20

21

22



24.6

24.8

25.0

25.2

25.4

25.6

25.8

26.0

26.2

26.4

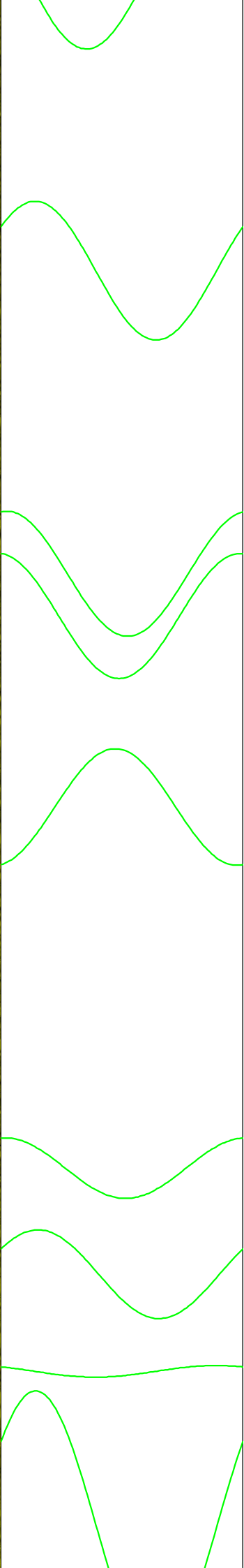
26.6

26.8

27.0

27.2

27.4



23

24

25

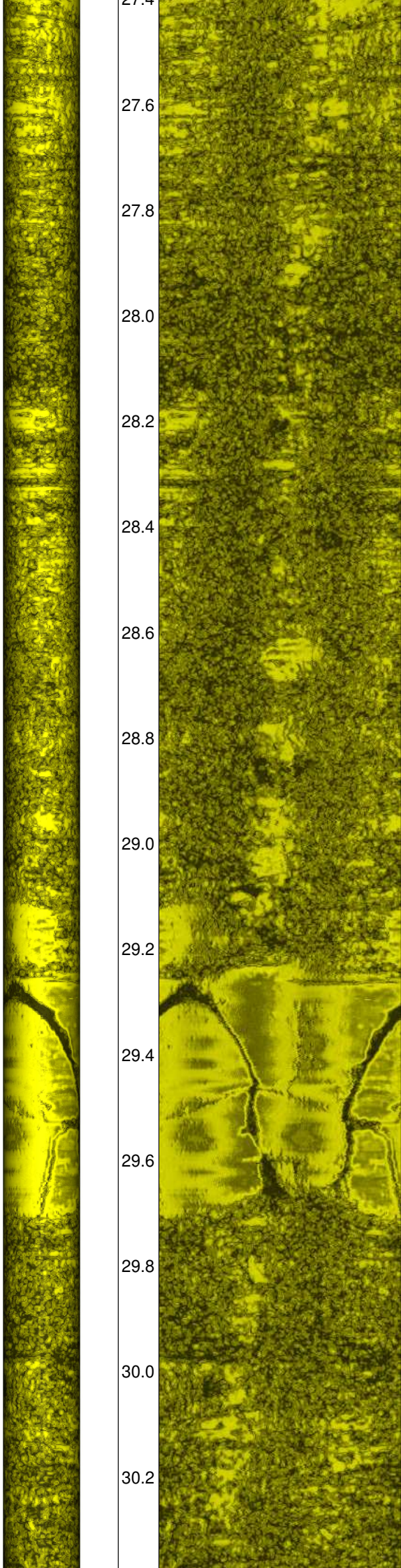
26

27

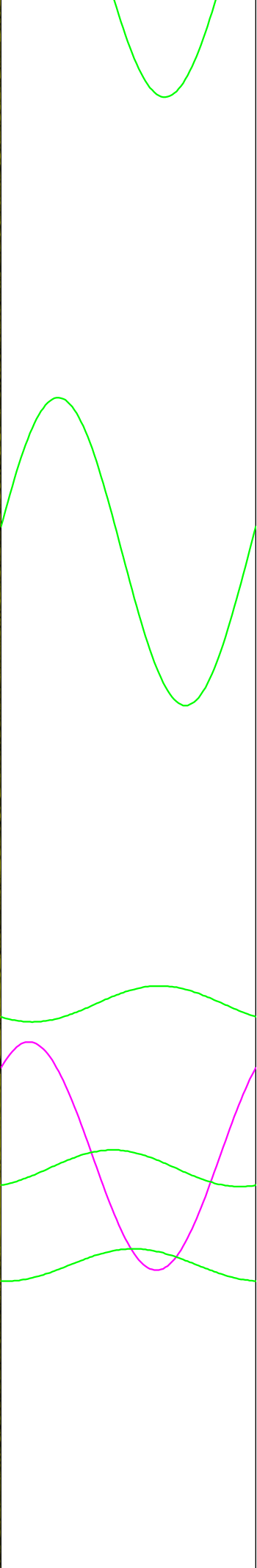
28

29

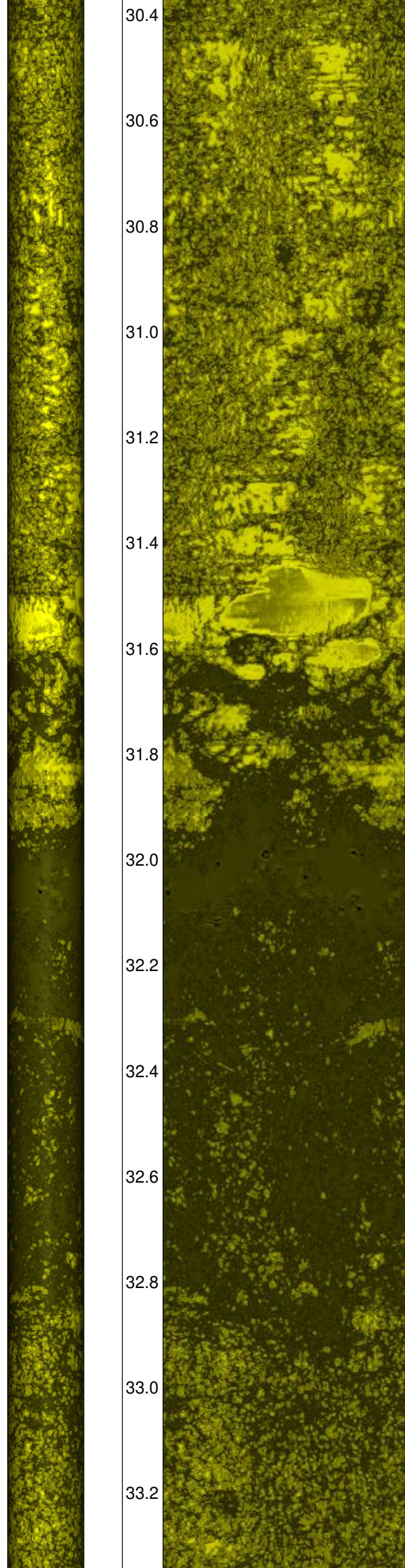
30



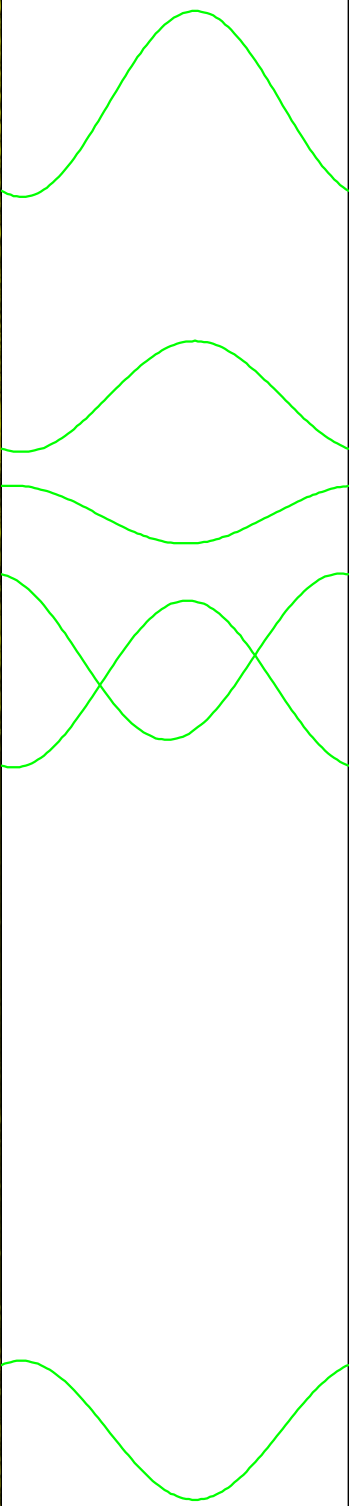
27.4
27.6
27.8
28.0
28.2
28.4
28.6
28.8
29.0
29.2
29.4
29.6
29.8
30.0
30.2



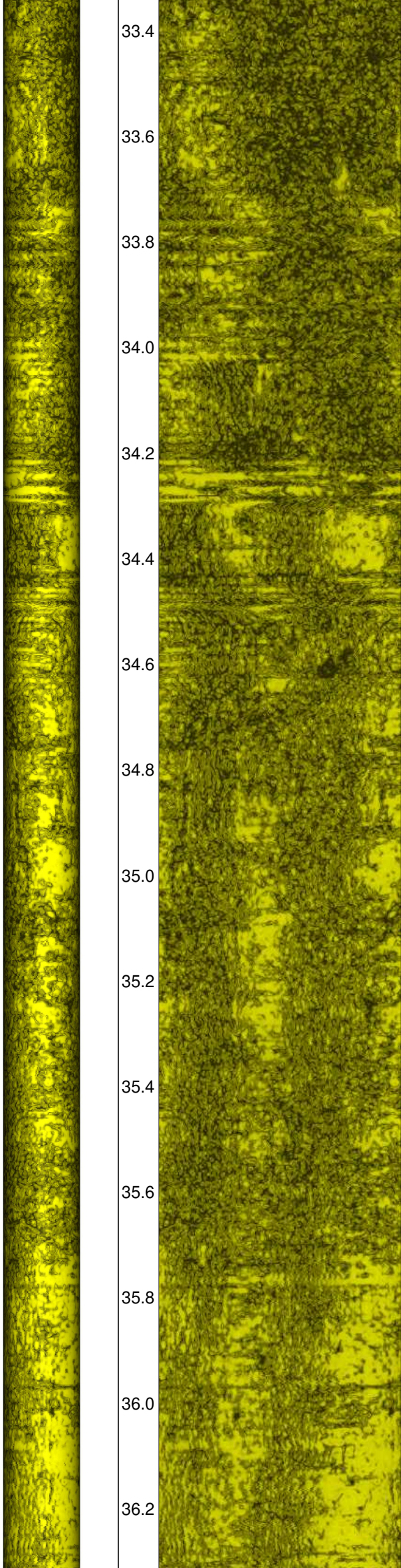
31
32
33
34
35



30.4
30.6
30.8
31.0
31.2
31.4
31.6
31.8
32.0
32.2
32.4
32.6
32.8
33.0
33.2



36
37
38
39
40
41



33.4

33.6

33.8

34.0

34.2

34.4

34.6

34.8

35.0

35.2

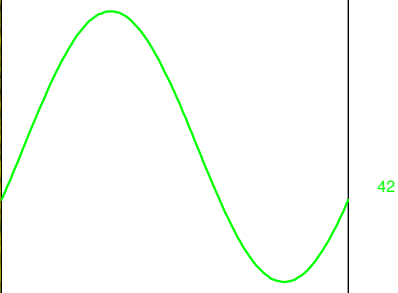
35.4

35.6

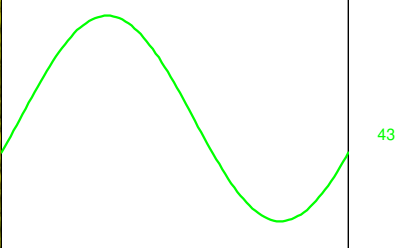
35.8

36.0

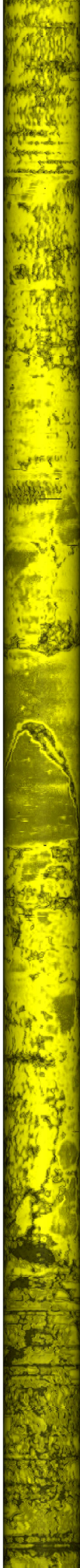
36.2



42



43



36.4

36.6

36.8

37.0

37.2

37.4

37.6

37.8

38.0

38.2

38.4

38.6

38.8

39.0

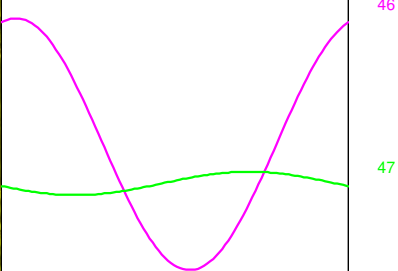
39.2



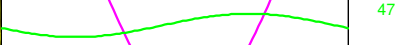
44



45



46



47



48



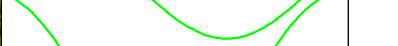
49



50



51



52

