



Geotechnisches Ingenieurbüro
Prof. Fecker und Partner GmbH

Messprogramm
ETIBS® - Optischer Bohrlochscanner
ABF - Akustisches Bohrlochfernsehen

Erkundungsobjekt
Rhein-Main-Link, PFA HE3

Auftraggeber: Bohr- ArGe 3-5
Bohrung: P07-But-BK-1625
Ort: Butzbach
Auftragsnummer: e-3679

Teufenmaßstab
1:10


Koordinaten
Rechtswert:
Hochwert:
Höhe ü. NN:

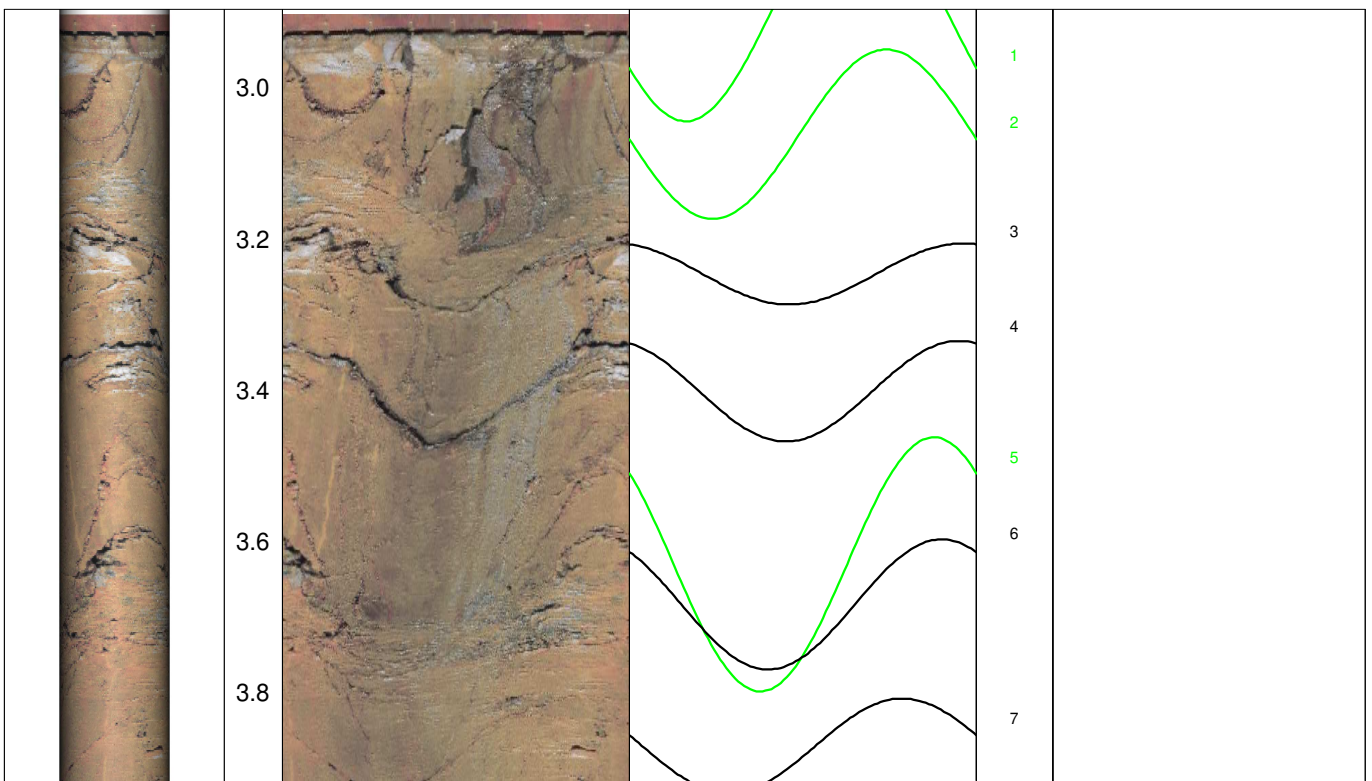
Messbezugspunkt: GOK

Messdatum:	02.06.2026	Bohrlochdurchmesser:	146 mm
Bohrteufe:	50.00 m (lt. BM)	Richtung der Bohrung:	vertikal
Messintervall:	2.90 m - 48.70 m (45.80 m)	Quelldatei:	But1625.blk / But1625.log
Verrohrung bis:	2.92 m	Messingenieur:	Hr. Newrzella
Wasserstand:	26.07 m	Bearbeiter:	Fr. Sagmajster

Bemerkungen: Messintervall ETIBS: 2.90 m - 30.40 m (27.50 m)
Messintervall ABF: 30.40 m - 48.70 m (18.30 m)

Trennflächen : schwarz - Schichtung / Schieferung
blau - Schrägschichtung
magenta - Klüfte
grün - Klüfte nur z. T. erkennbar

Pseudokern 	[m]	Bohrlochabwicklung					Trennflächenabwicklung					Nr.	Bemerkung
		N	O	S	W	N	N	O	S	W	N		





4.0

4.2

4.4

4.6

4.8

5.0

5.2

5.4

5.6

5.8

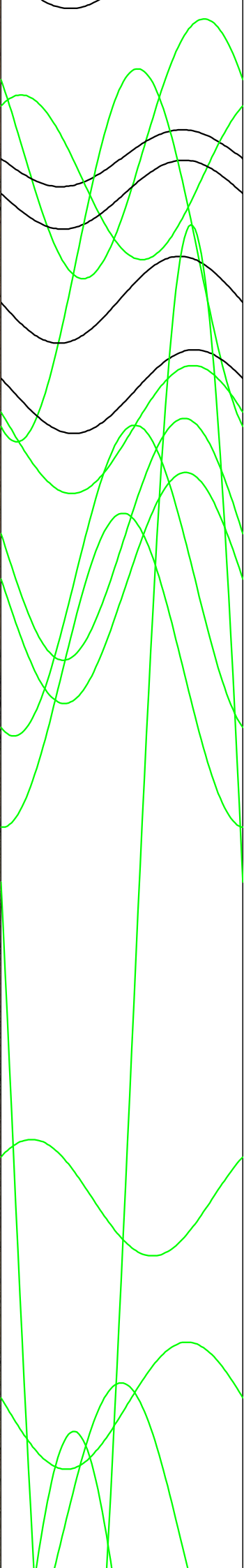
6.0

6.2

6.4

6.6

6.8



8

10

9

11

13

14

15

12

16

18

17

19

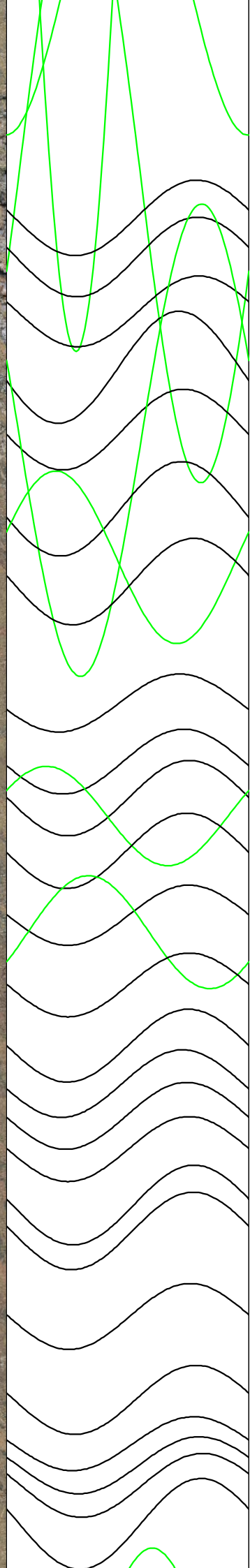
20

21

22



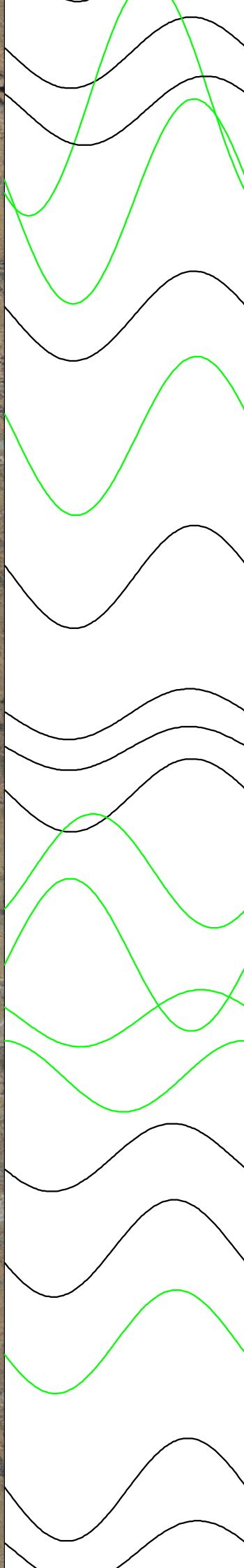
7.0
7.2
7.4
7.6
7.8
8.0
8.2
8.4
8.6
8.8
9.0
9.2
9.4
9.6
9.8



23
25
26
24
27
30
28
29
31
32
33
34
35
37
36
38
39
40
41
42
43
44
45
46
47
48
49
50
51
52
53



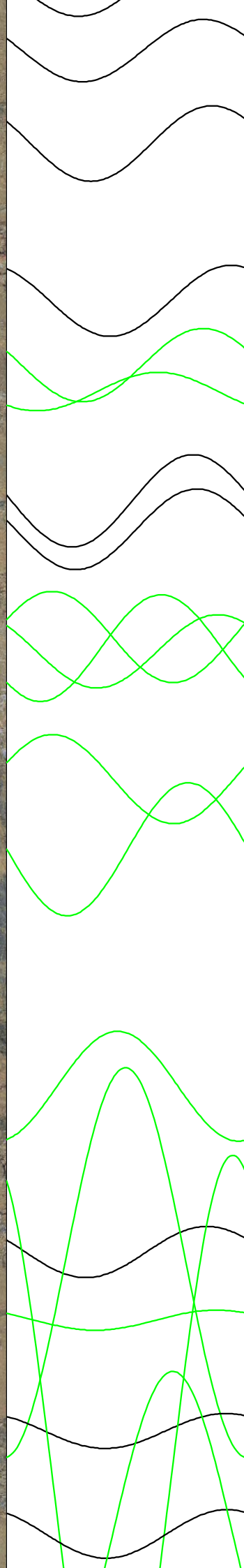
10.0
10.2
10.4
10.6
10.8
11.0
11.2
11.4
11.6
11.8
12.0
12.2
12.4
12.6
12.8



54
56
57
55
58
59
60
61
62
63
64
65
66
67
68
69
70
71
72



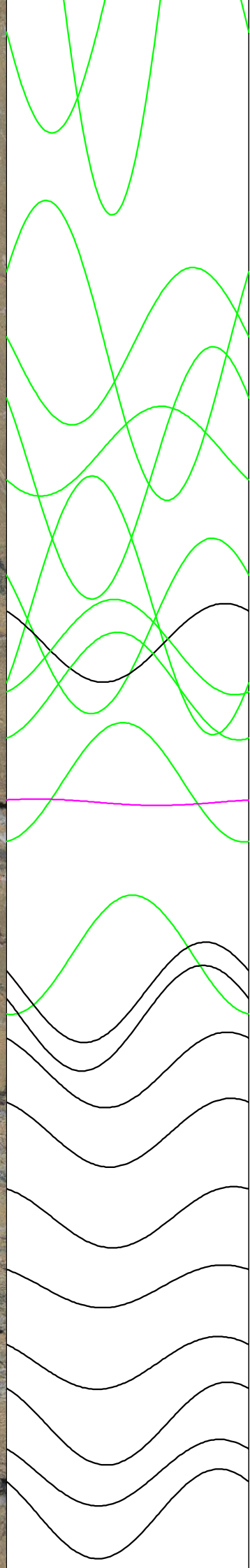
13.0
13.2
13.4
13.6
13.8
14.0
14.2
14.4
14.6
14.8
15.0
15.2
15.4
15.6
15.8



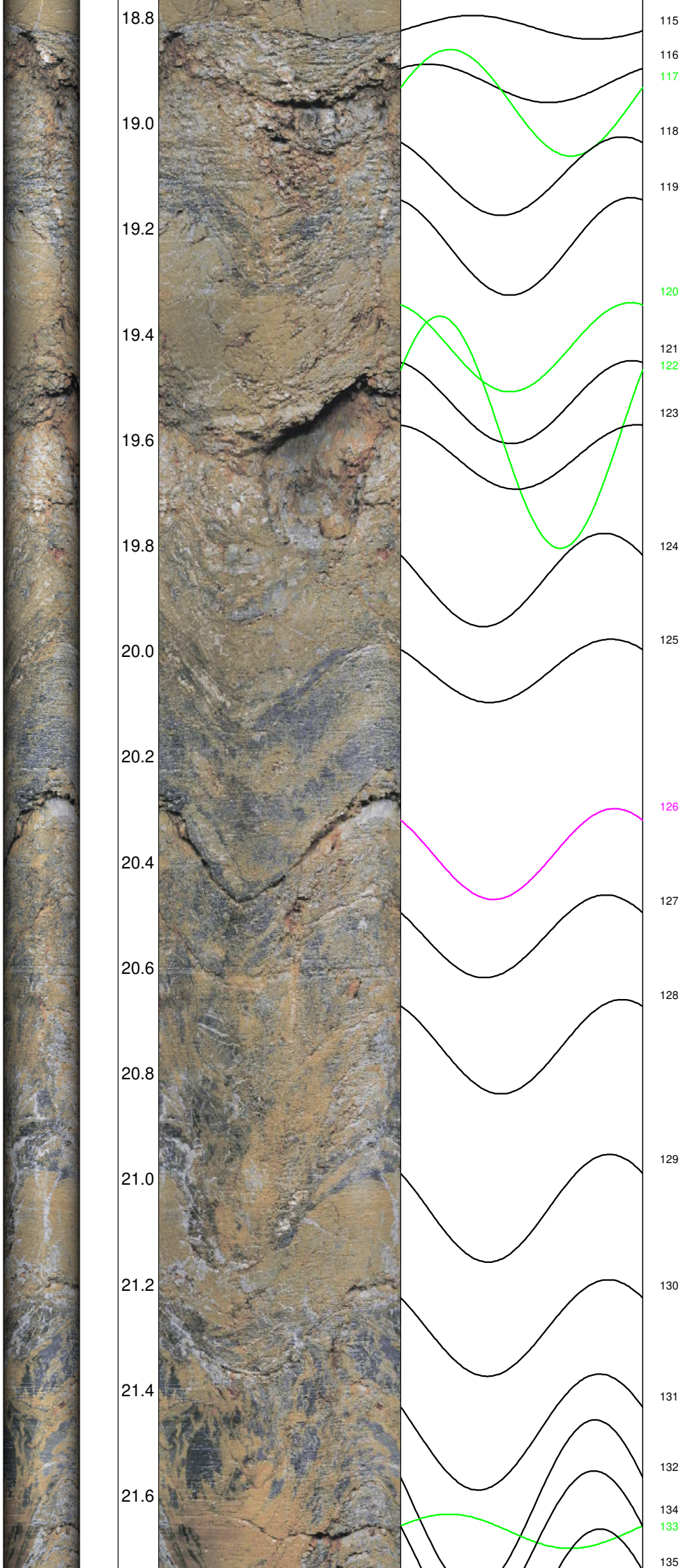
73
74
75
76
77
78
79
80
81
82
83
84
85
90
86
88
89
87
91



15.8
16.0
16.2
16.4
16.6
16.8
17.0
17.2
17.4
17.6
17.8
18.0
18.2
18.4
18.6



92
94
93
96
95
98
99
97
100
101
103
102
105
106
104
107
108
109
110
111
112
113
114





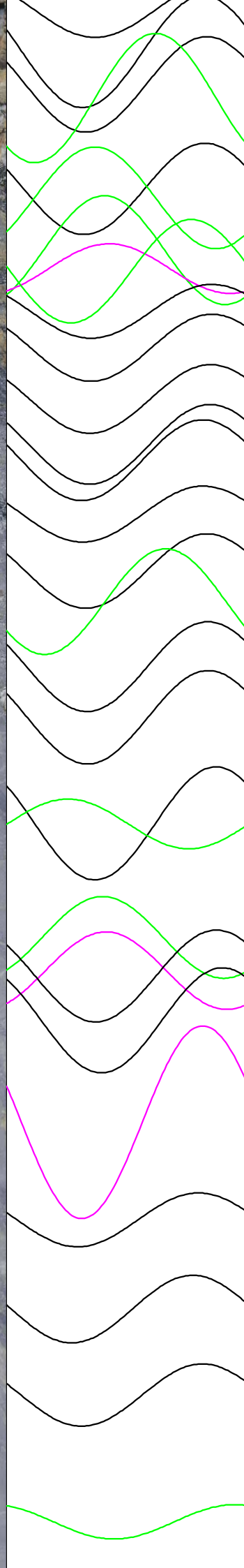
21.8
22.0
22.2
22.4
22.6
22.8
23.0
23.2
23.4
23.6
23.8
24.0
24.2
24.4
24.6



136
137
138
139
144
141
142
143
145
146
147
148
149
150
151
152
153
154
156
155
157
158
160
159
161
162



24.8
25.0
25.2
25.4
25.6
25.8
26.0
26.2
26.4
26.6
26.8
27.0
27.2
27.4
27.6

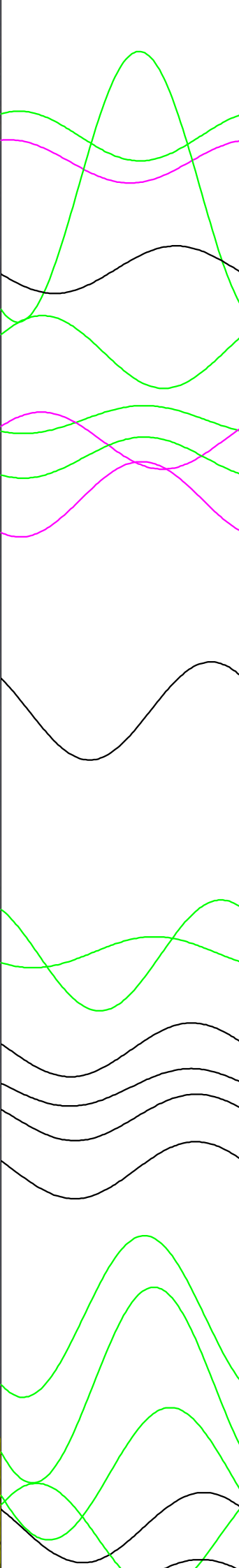
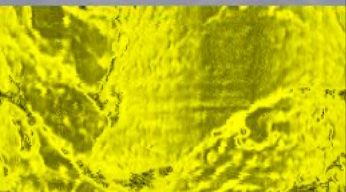


163
164
165
166
167
170
169
168
171
172
173
174
175
176
177
178
179
180
181
182
185
183
186
184
187
188
189
190
191

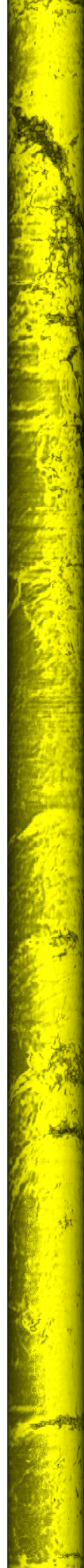
Wasserspiegel



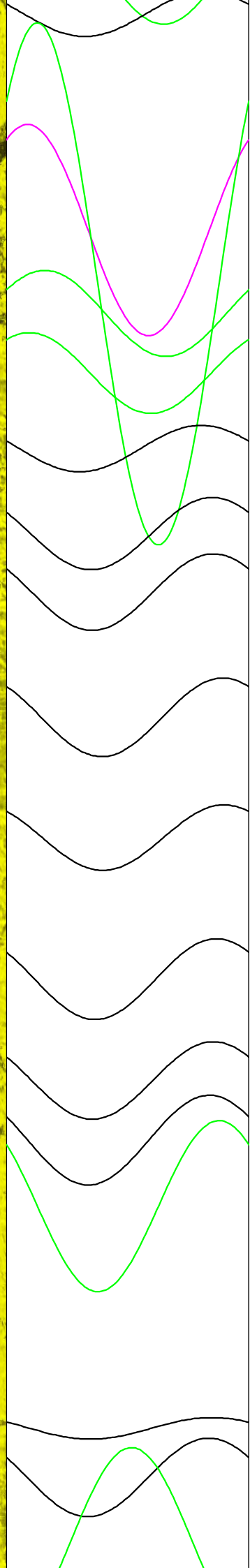
27.8
28.0
28.2
28.4
28.6
28.8
29.0
29.2
29.4
29.6
29.8
30.0
30.2
30.4
30.6



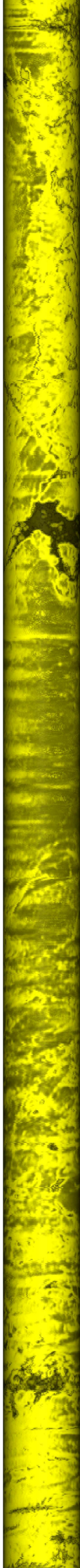
192
193
195
194
196
198
197
199
200
201
203
202
204
205
206
207
208
209
210
211
213



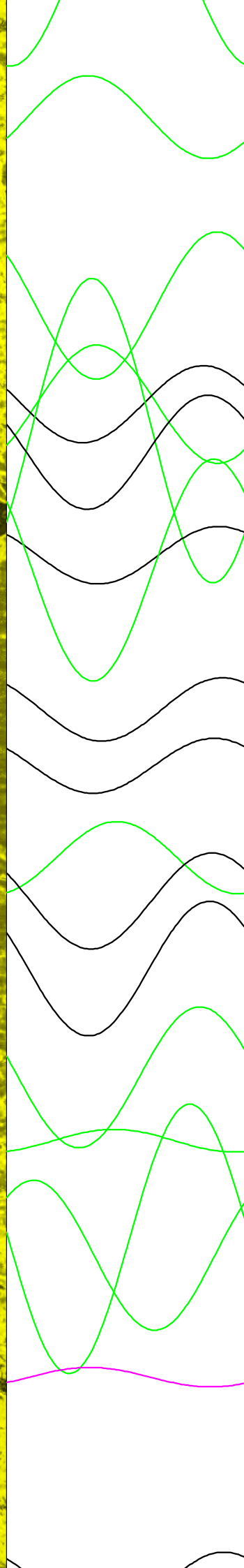
30.8
31.0
31.2
31.4
31.6
31.8
32.0
32.2
32.4
32.6
32.8
33.0
33.2
33.4
33.6



215
214
216
217
218
219
220
221
222
223
224
225
226
227
228



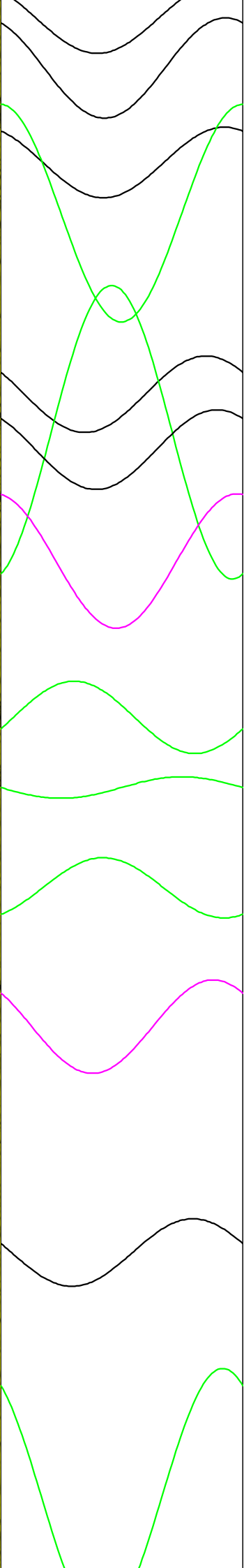
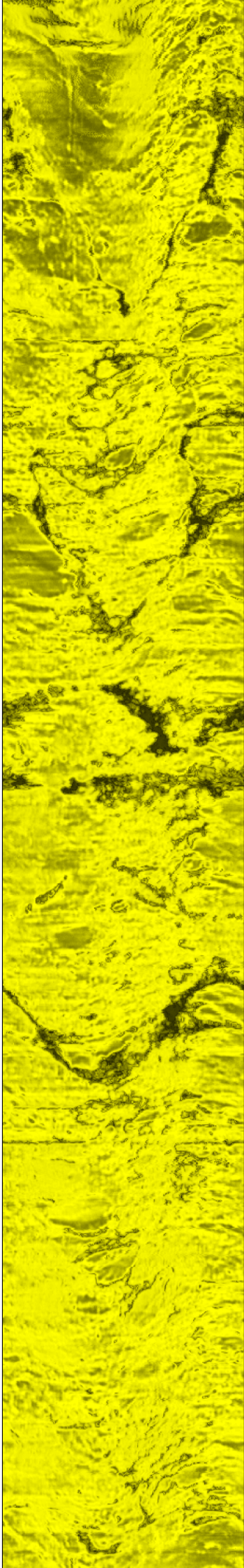
33.8
34.0
34.2
34.4
34.6
34.8
35.0
35.2
35.4
35.6
35.8
36.0
36.2
36.4



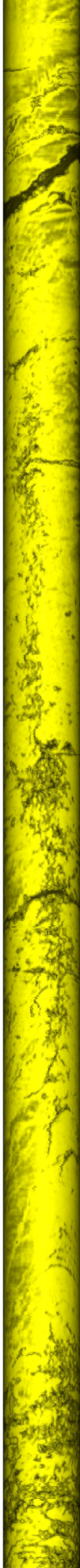
229
230
231
233
235
232
237
234
236
238
239
241
240
242
243
244
246
245
247
248



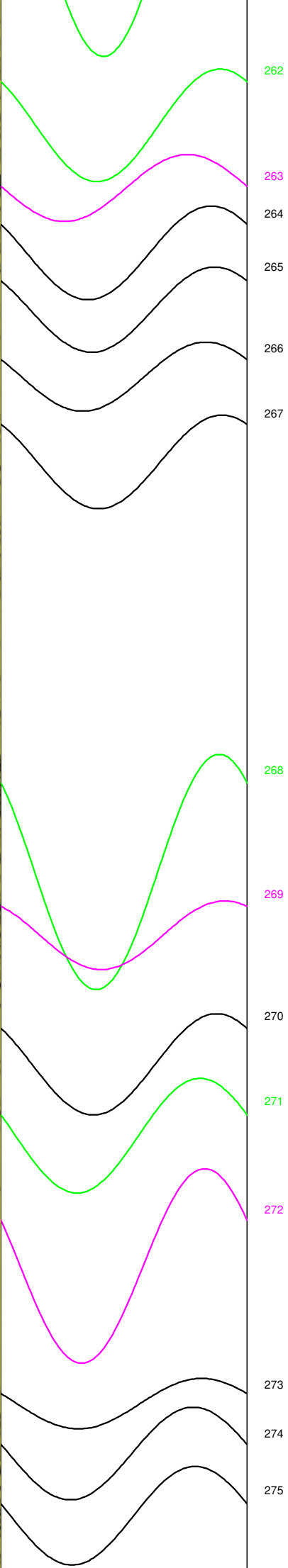
36.6
36.8
37.0
37.2
37.4
37.6
37.8
38.0
38.2
38.4
38.6
38.8
39.0
39.2
39.4



249
250
251
252
254
255
253
256
257
258
259
260
261



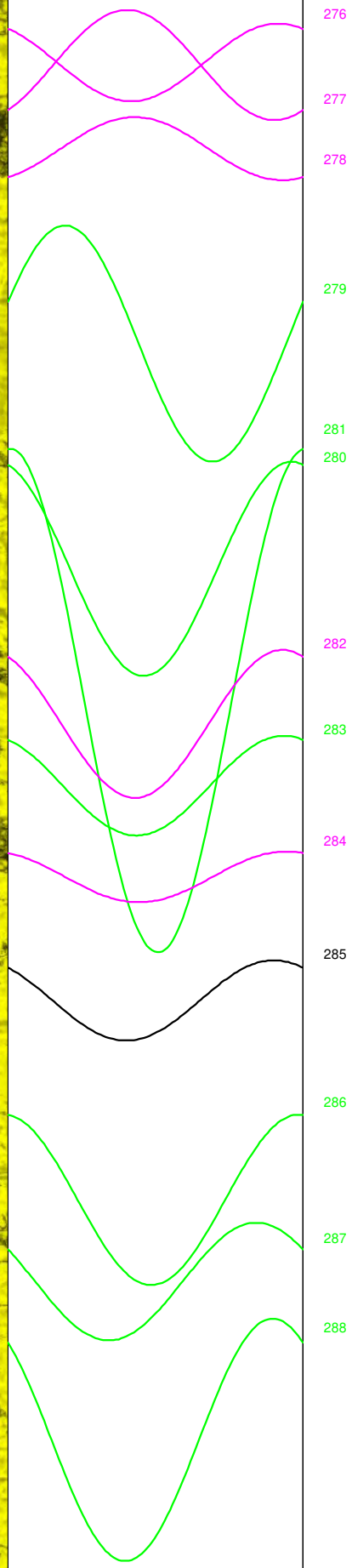
39.6
39.8
40.0
40.2
40.4
40.6
40.8
41.0
41.2
41.4
41.6
41.8
42.0
42.2
42.4



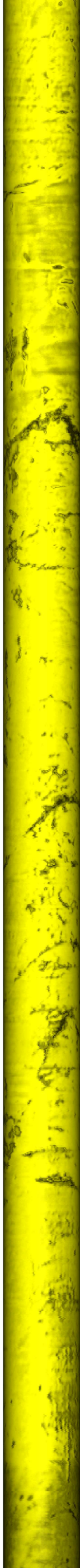
262
263
264
265
266
267
268
269
270
271
272
273
274
275



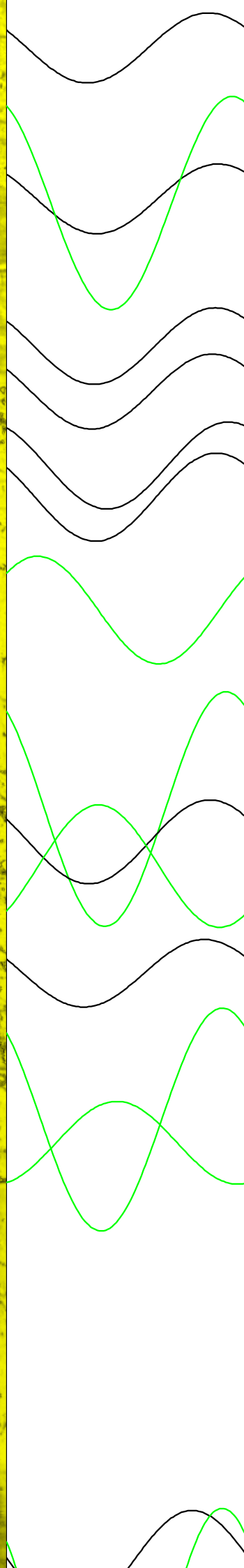
42.6
42.8
43.0
43.2
43.4
43.6
43.8
44.0
44.2
44.4
44.6
44.8
45.0
45.2
45.4



276
277
278
279
280
281
282
283
284
285
286
287
288



45.6
45.8
46.0
46.2
46.4
46.6
46.8
47.0
47.2
47.4
47.6
47.8
48.0
48.2
48.4



289
291
290
292
293
294
295
296
297
298
299
300
301
302
304
303

48.6

