



**Messprogramm**  
ETIBS® - Optischer Bohrlochscanner  
ABF - Akustisches Bohrlochfernsehen

**Erkundungsobjekt**  
Rhein-Main-Link, PFA HE3

**Auftraggeber:** Bohr- ArGe 3-5  
**Bohrung:** P07-But-BK-0295  
**Ort:** Butzbach  
**Auftragsnummer:** e-3679

**Teufenmaßstab**  
**1:10**

**Koordinaten**


**Rechtswert:**  
**Hochwert:**  
**Höhe ü. NN:**

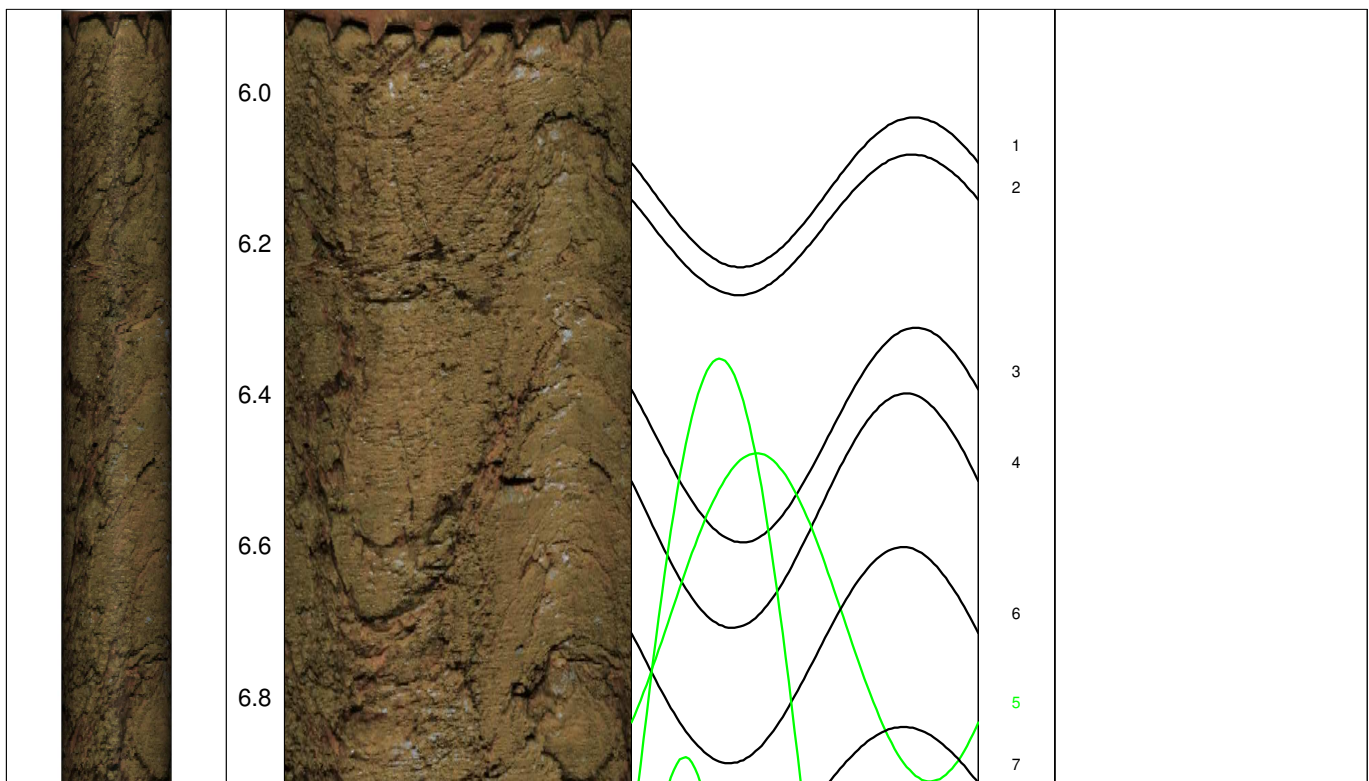
**Messbezugspunkt:** GOK

Messdatum:	07.05.2026	Bohrlochdurchmesser:	146 mm
Bohrteufe:	39.50 m (lt. BM)	Richtung der Bohrung:	vertikal
Messintervall:	5.89 m - 36.78 m (30.89 m)	Quelldatei:	But0295.blk / But0295.log
Verrohrung bis:	5.92 m	Messingenieur:	Hr. Barsuhn
Wasserstand:	11.41 m (fallend)	Bearbeiter:	Hr. Ertelt

**Bemerkungen:** Messintervall ETIBS: 5.89 m - 21.79 m (15.90 m)  
Messintervall ABF: 21.79 m - 36.78 m (14.99 m)

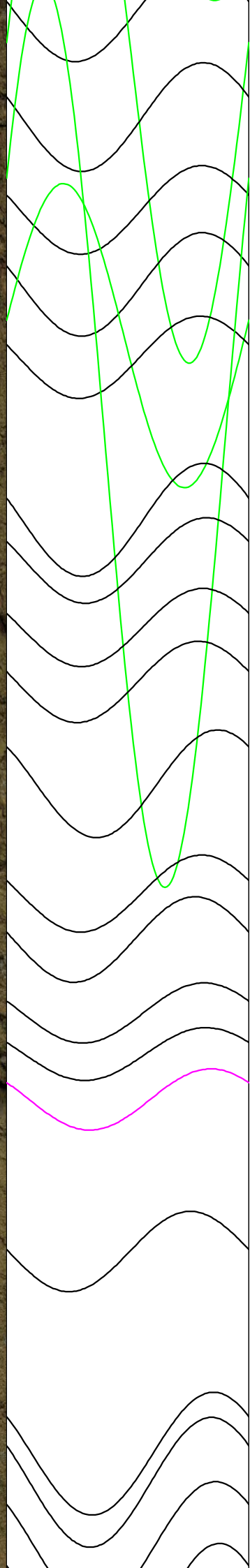
**Trennflächen :** schwarz - Schichtung / Schieferung  
blau - Schrägschichtung  
magenta - Klüfte  
grün - Klüfte nur z. T. erkennbar

Pseudokern 	[m]	Bohrlochabwicklung					Trennflächenabwicklung					Nr.	Bemerkung
		N	O	S	W	N	N	O	S	W	N		

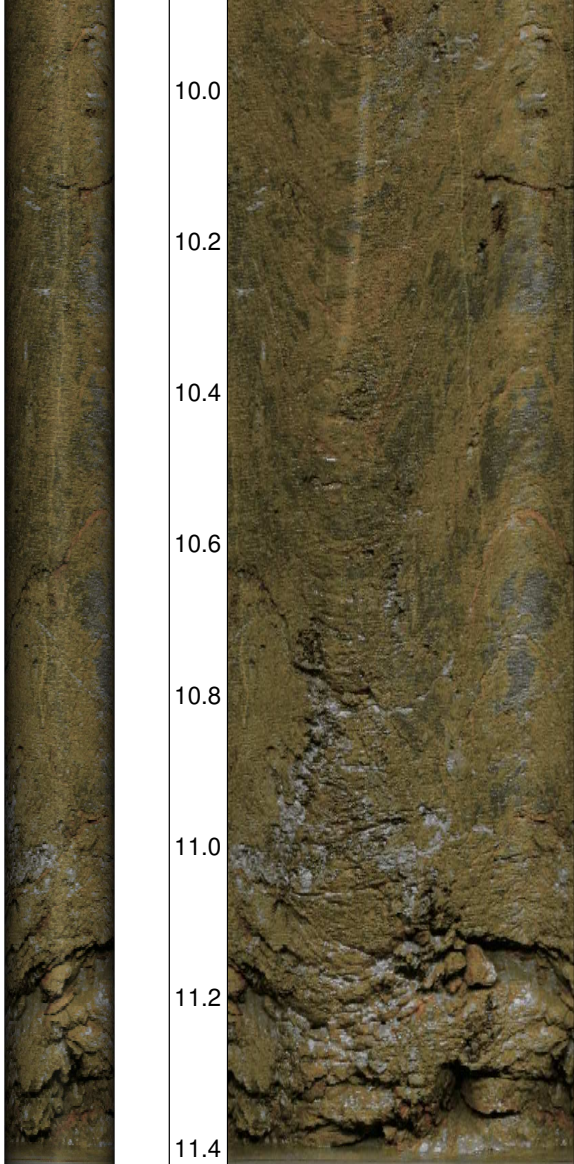




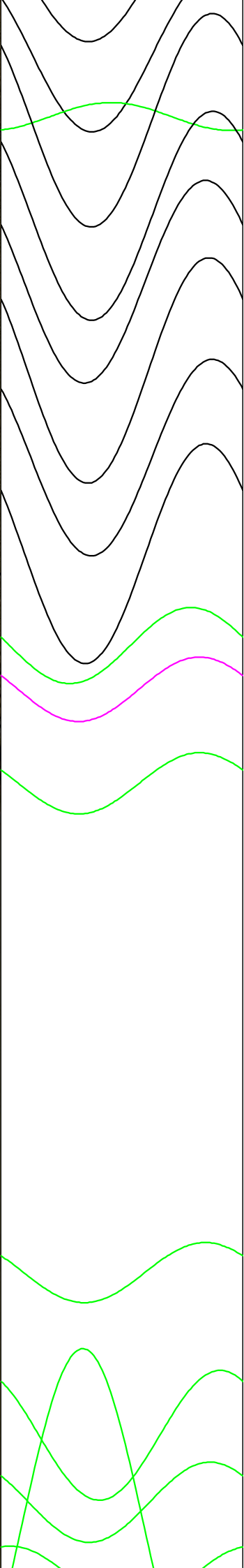
7.0  
7.2  
7.4  
7.6  
7.8  
8.0  
8.2  
8.4  
8.6  
8.8  
9.0  
9.2  
9.4  
9.6  
9.8



8  
9  
14  
10  
11  
12  
13  
15  
16  
17  
18  
19  
20  
21  
22  
23  
24  
25  
26  
27  
28  
29



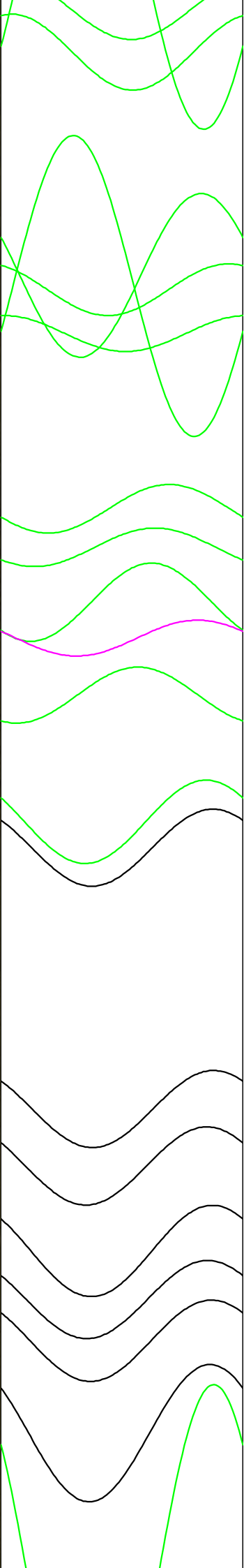
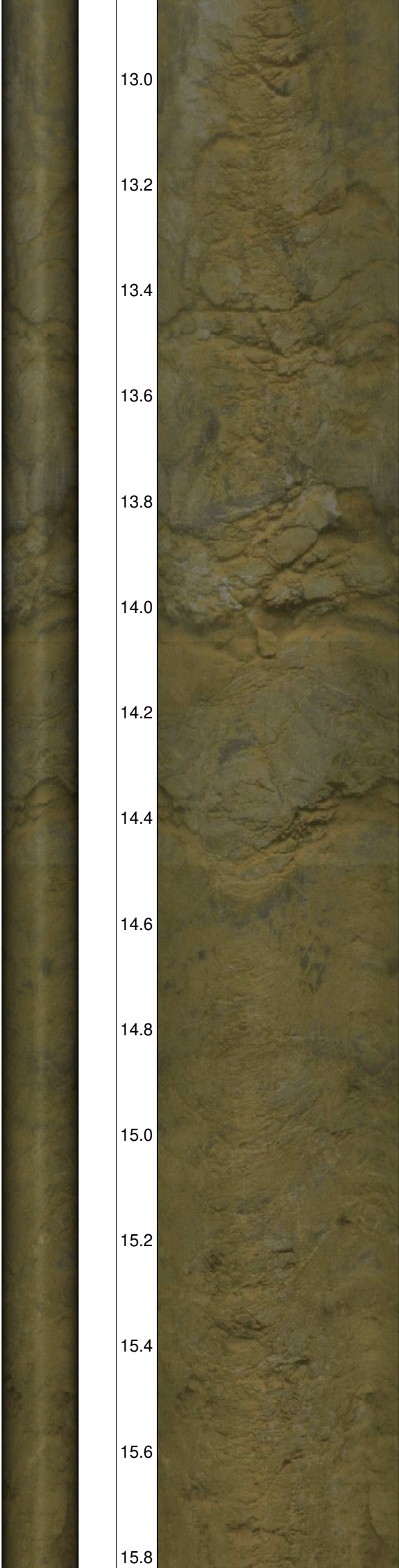
10.0  
10.2  
10.4  
10.6  
10.8  
11.0  
11.2  
11.4  
11.6  
11.8  
12.0  
12.2  
12.4  
12.6  
12.8



31  
30  
32  
33  
34  
35  
36  
37  
38  
39  
40  
41  
42  
44

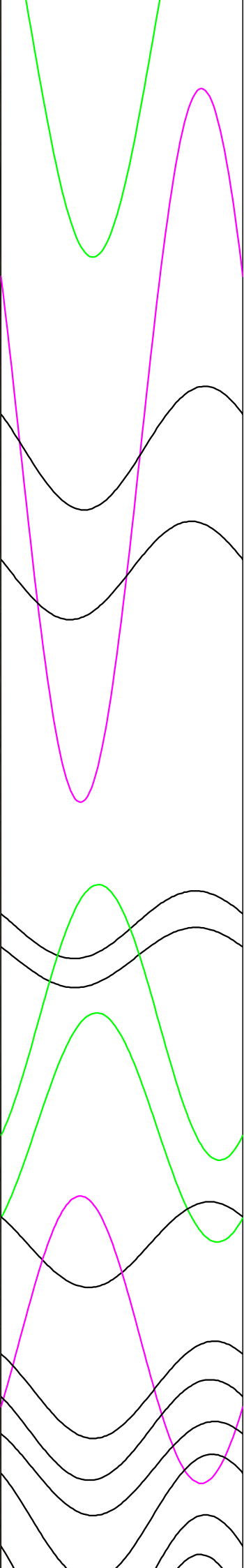
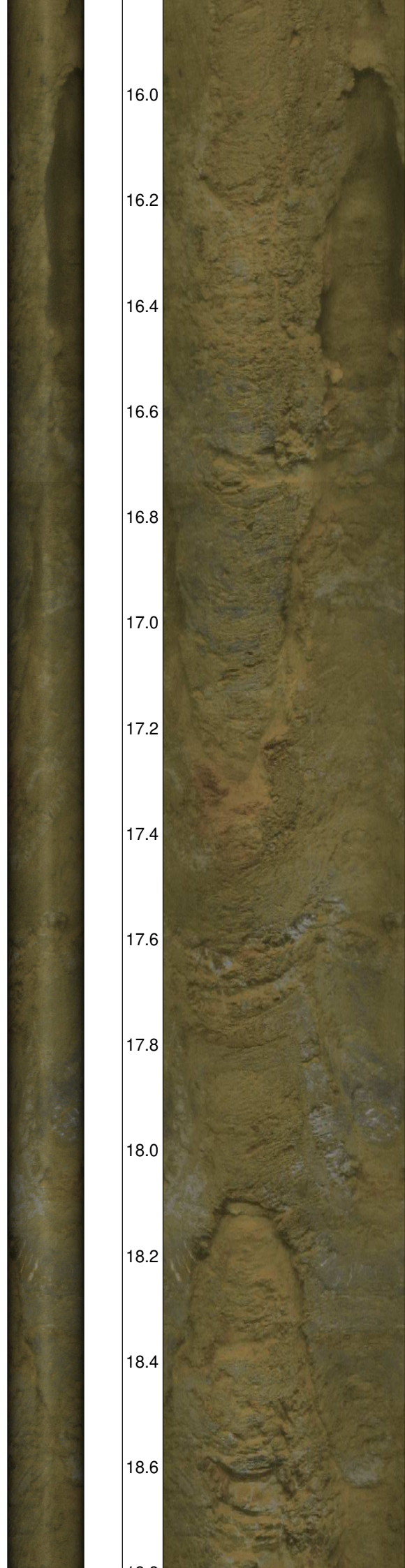
Wasserspiegel

13.0  
13.2  
13.4  
13.6  
13.8  
14.0  
14.2  
14.4  
14.6  
14.8  
15.0  
15.2  
15.4  
15.6  
15.8



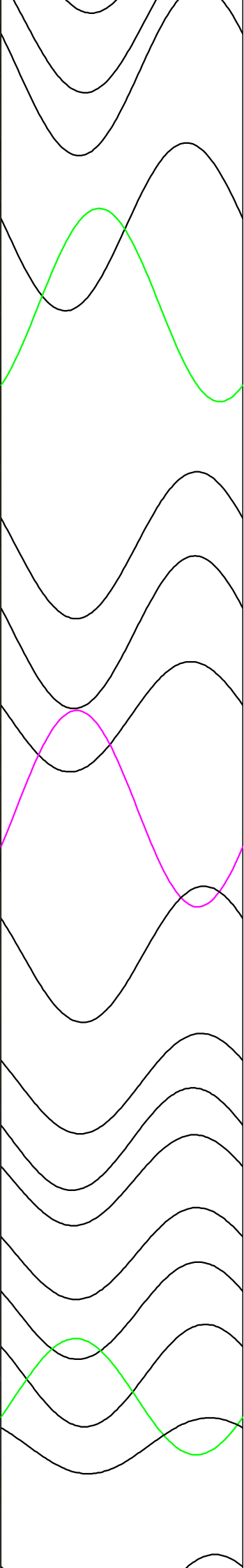
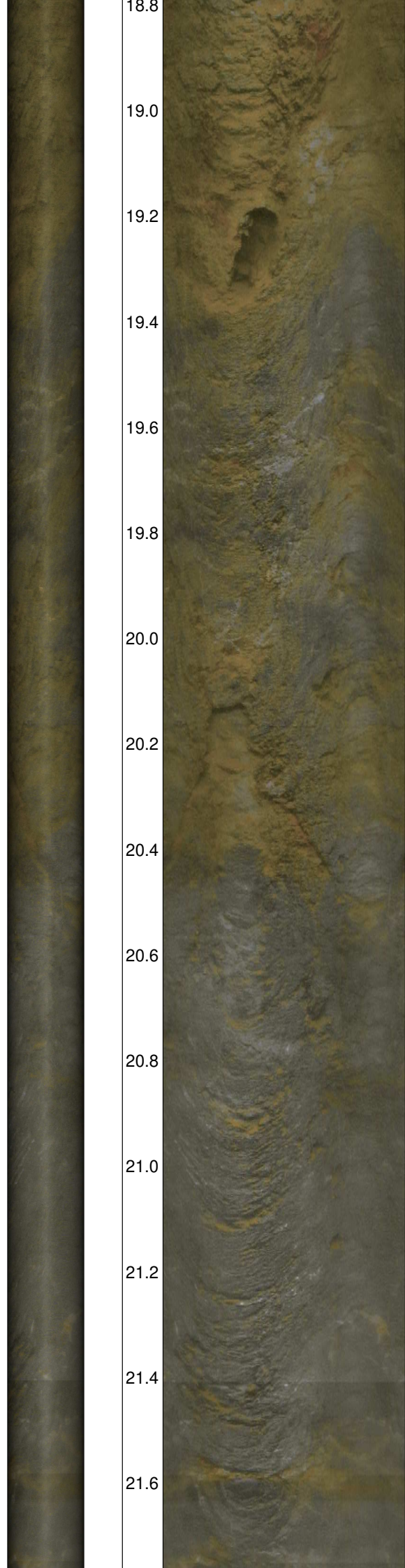
45  
43  
46  
48  
49  
47  
50  
51  
52  
53  
54  
55  
56  
57  
58  
59  
60  
61  
62  
63

16.0  
16.2  
16.4  
16.6  
16.8  
17.0  
17.2  
17.4  
17.6  
17.8  
18.0  
18.2  
18.4  
18.6  
18.8

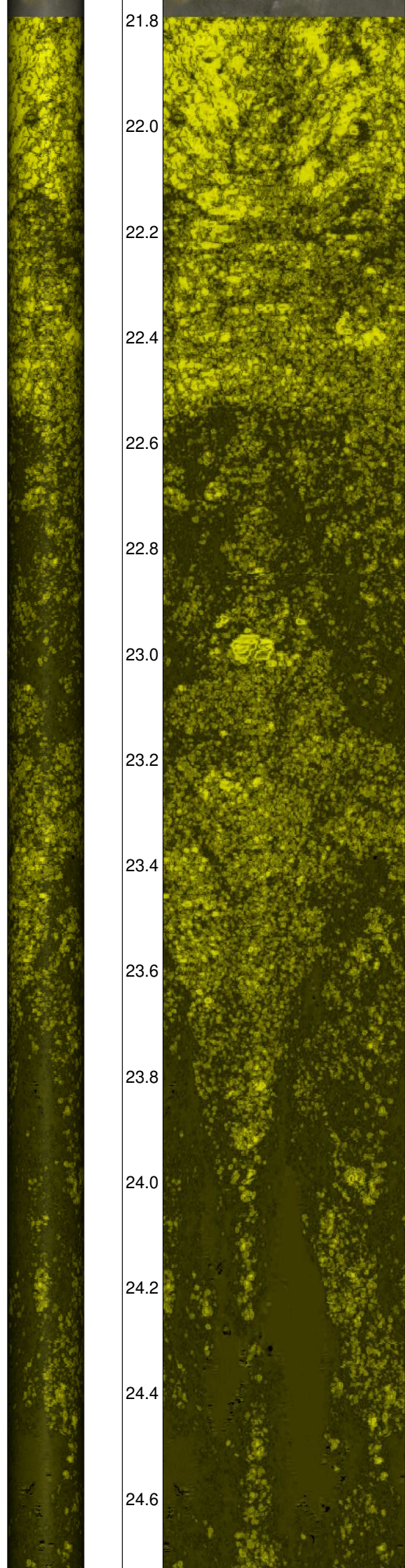


64  
65  
66  
67  
68  
69  
70  
71  
72  
73  
74  
75  
76  
77

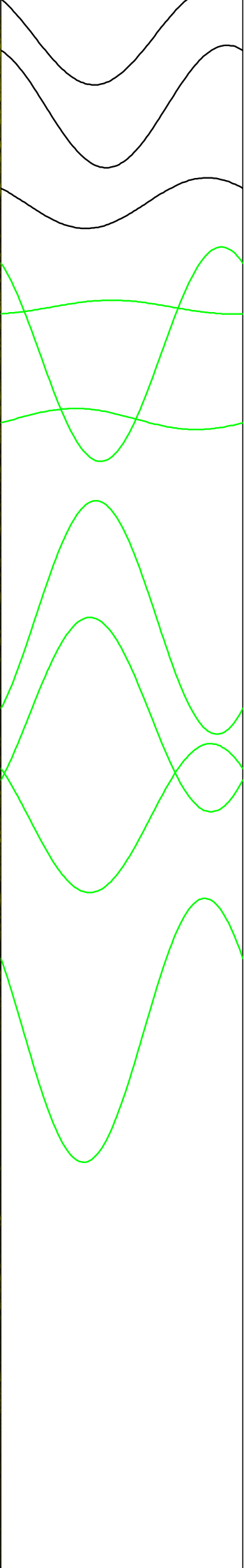
18.8  
19.0  
19.2  
19.4  
19.6  
19.8  
20.0  
20.2  
20.4  
20.6  
20.8  
21.0  
21.2  
21.4  
21.6



78  
79  
80  
81  
82  
83  
84  
85  
86  
87  
88  
89  
90  
91  
92  
93  
94

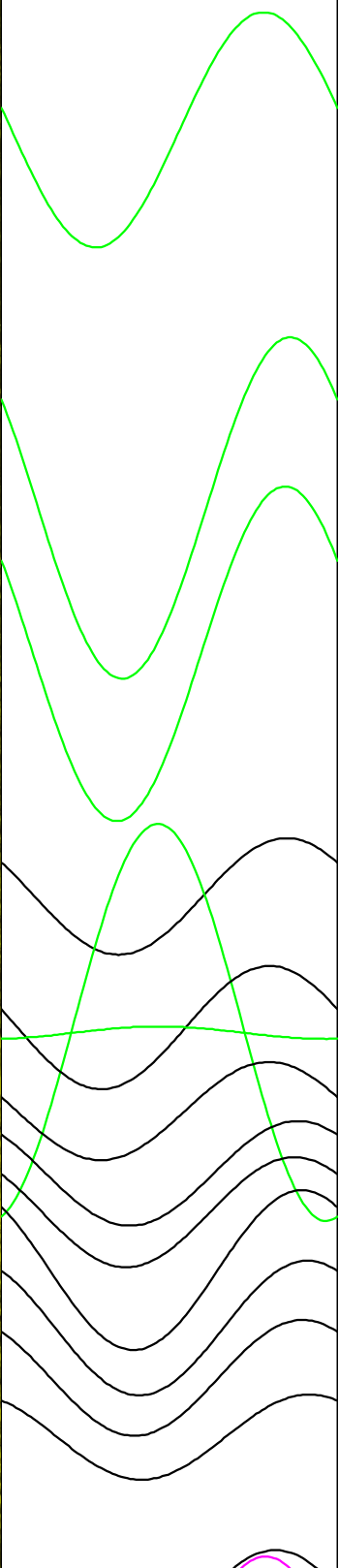
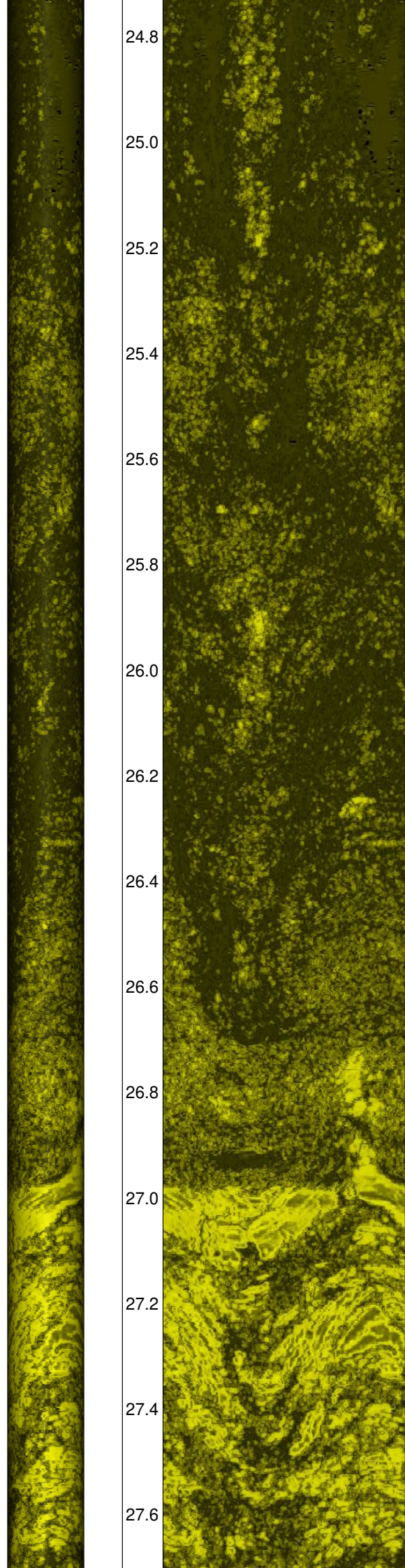


21.8  
22.0  
22.2  
22.4  
22.6  
22.8  
23.0  
23.2  
23.4  
23.6  
23.8  
24.0  
24.2  
24.4  
24.6



95  
96  
98  
97  
99  
100  
102  
101  
103

24.8  
25.0  
25.2  
25.4  
25.6  
25.8  
26.0  
26.2  
26.4  
26.6  
26.8  
27.0  
27.2  
27.4  
27.6



104  
105  
106  
107  
109  
110  
111  
112  
113  
114  
115  
116  
117  
118



27.8

28.0

28.2

28.4

28.6

28.8

29.0

29.2

29.4

29.6

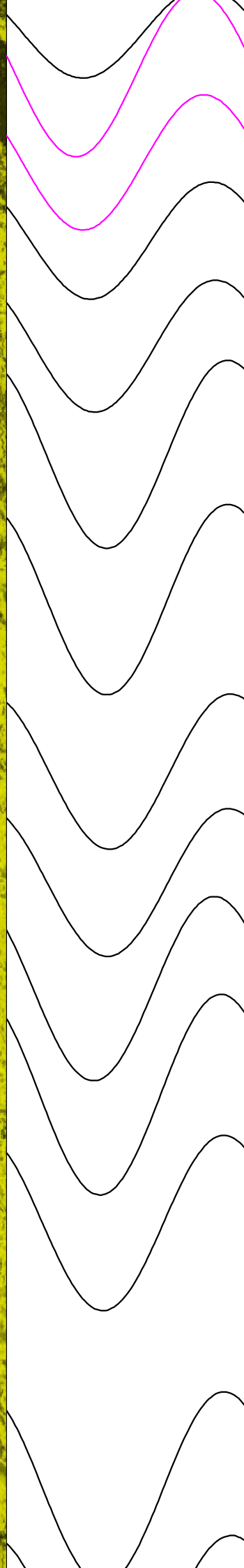
29.8

30.0

30.2

30.4

30.6



118

120

121

122

123

124

125

126

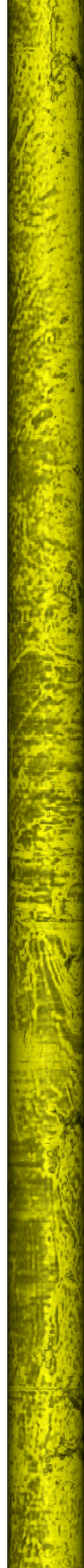
127

128

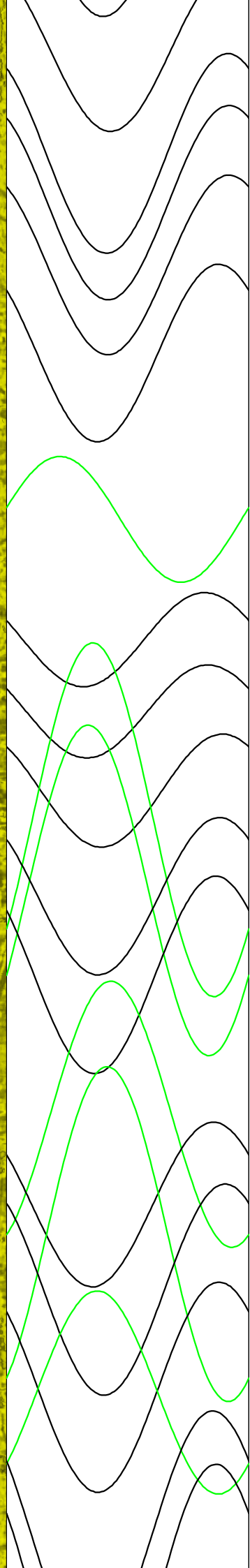
129

130

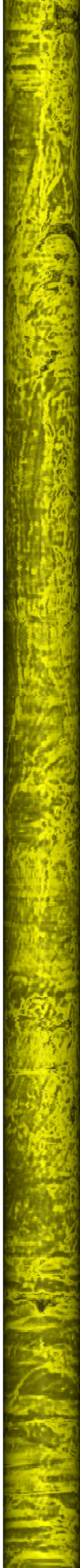
131



30.8  
31.0  
31.2  
31.4  
31.6  
31.8  
32.0  
32.2  
32.4  
32.6  
32.8  
33.0  
33.2  
33.4  
33.6




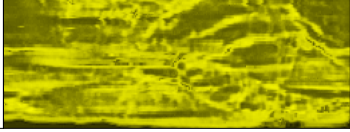
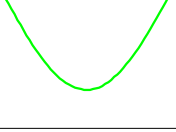
132  
133  
134  
135  
136  
137  
138  
139  
142  
143  
140  
141  
145  
147  
144  
148  
146  
150  
149  
151



33.8  
34.0  
34.2  
34.4  
34.6  
34.8  
35.0  
35.2  
35.4  
35.6  
35.8  
36.0  
36.2  
36.4  
36.6



152  
153  
154  
155  
156  
157  
158  
159  
160  
161  
162

						
--	---	--	---	--	--	--