


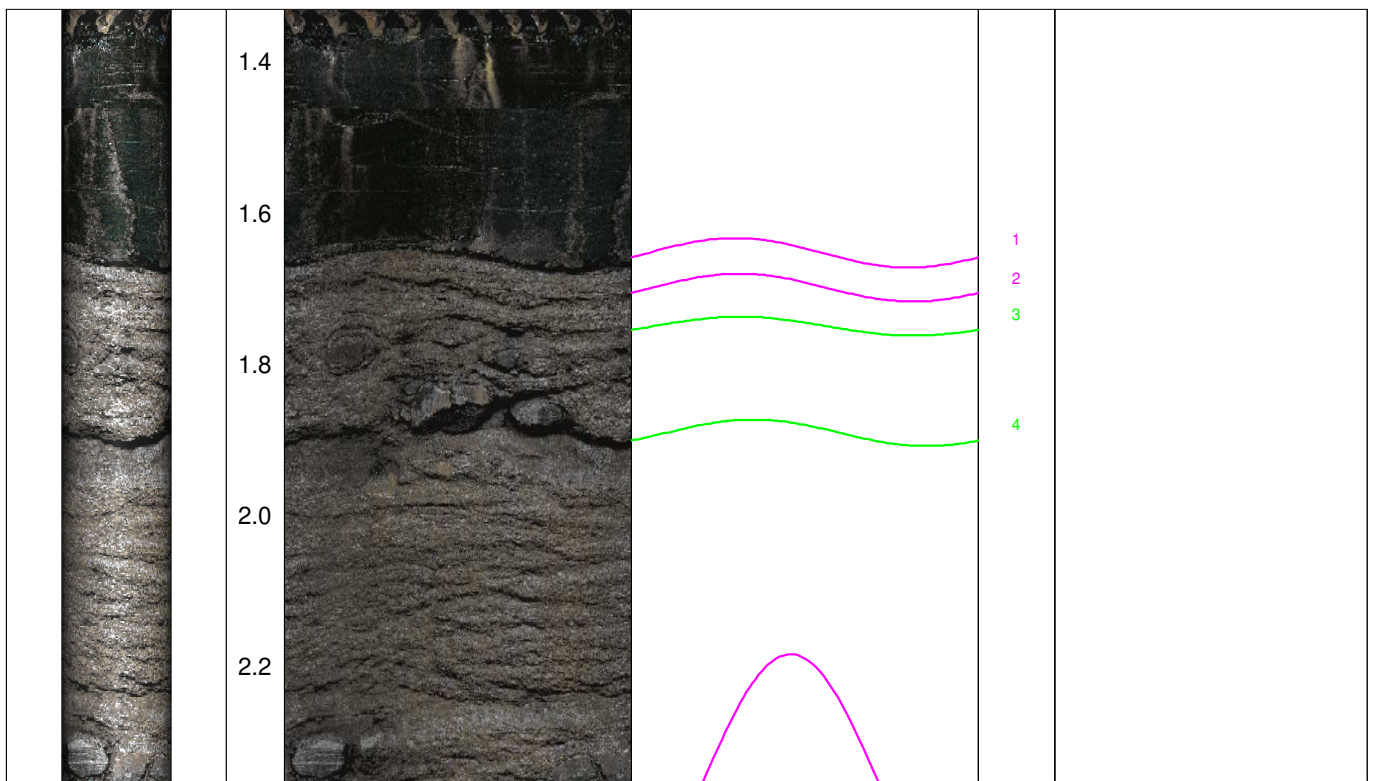


Geotechnisches Ingenieurbüro
Prof. Fecker und Partner GmbH

Messprogramm		Erkundungsobjekt	
ETIBS® - Optischer Bohrlochscanner		Rhein-Main-Link, PFA HE3	
Auftraggeber: Bohr- ArGe 3-5 Bohrung: P07-Bus-BK-0061 Ort: Buseck Auftragsnummer: e-3679		Teufenmaßstab 1:10 Messbezugspunkt: GOK	Koordinaten Rechtswert: Hochwert: Höhe ü. NN:
Messdatum:	09.03.2026	Bohrlochdurchmesser:	146 mm
Bohrteufe:	41.00 m (lt. BM)	Richtung der Bohrung:	vertikal
Messintervall:	1.33 m - 39.37 m (38.04 m)	Quelldatei:	Bus0061.blk / Bus0061.log
Verrohrung bis:	1.36 m	Messingenieur:	Hr. Newrzella
Wasserstand:	16.00 m	Bearbeiter:	Fr. Sagmajster

Bemerkungen:
Trennflächen : schwarz - Schichtung / Schieferung blau - Schrägschichtung magenta - Klüfte grün - Klüfte nur z. T. erkennbar

Pseudokern	[m]	Bohrlochabwicklung					Trennflächenabwicklung					Nr.	Bemerkung
		N	O	S	W	N	N	O	S	W	N		
													





2.4

2.6

2.8

3.0

3.2

3.4

3.6

3.8

4.0

4.2

4.4

4.6

4.8

5.0

5.2



6

5

7

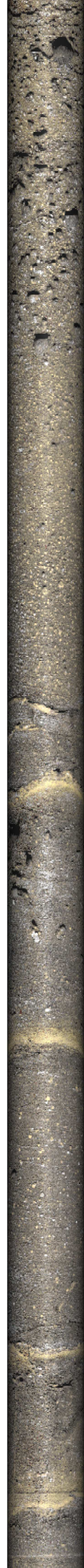
8

9

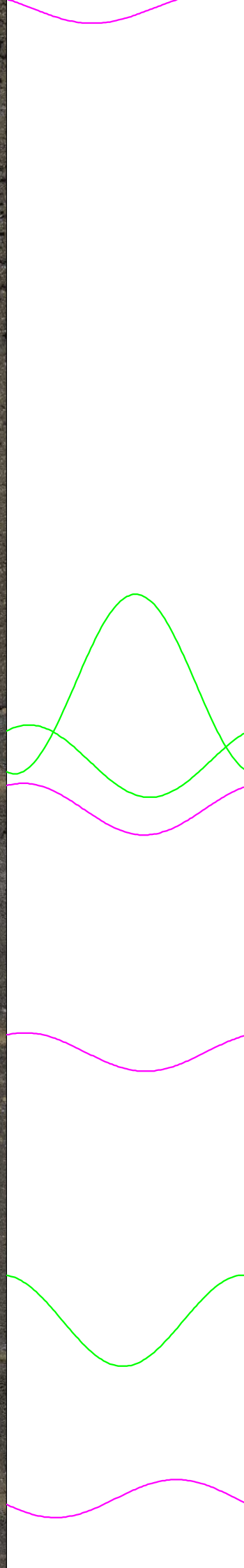
10

11

12



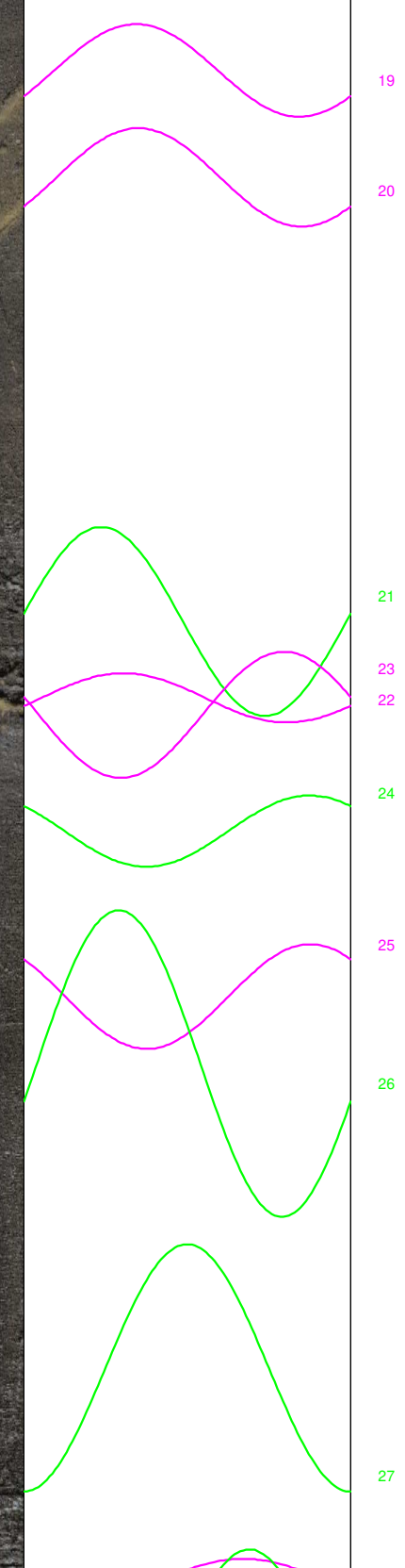
5.4
5.6
5.8
6.0
6.2
6.4
6.6
6.8
7.0
7.2
7.4
7.6
7.8
8.0
8.2



14
13
15
16
17
18



8.4
8.6
8.8
9.0
9.2
9.4
9.6
9.8
10.0
10.2
10.4
10.6
10.8
11.0
11.2



19
20
21
22
23
24
25
26
27



11.4

11.6

11.8

12.0

12.2

12.4

12.6

12.8

13.0

13.2

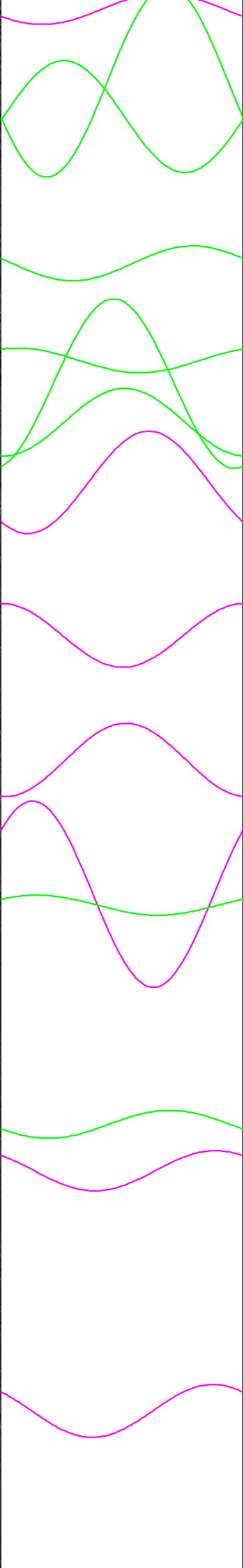
13.4

13.6

13.8

14.0

14.2



28

30

31

32

34

33

35

36

37

38

39

40

41

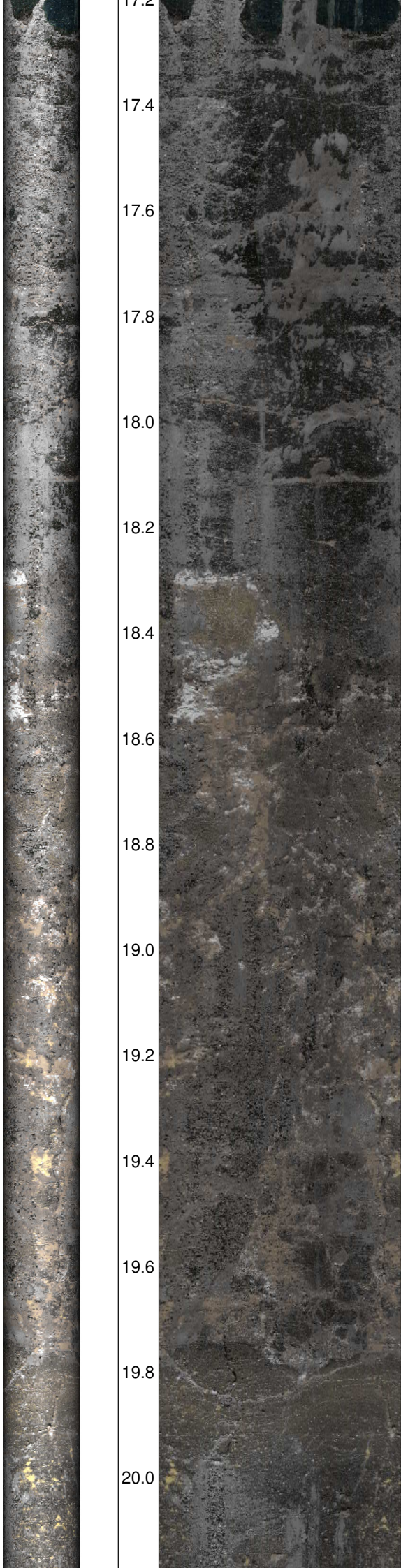
42



14.4
14.6
14.8
15.0
15.2
15.4
15.6
15.8
16.0
16.2
16.4
16.6
16.8
17.0
17.2

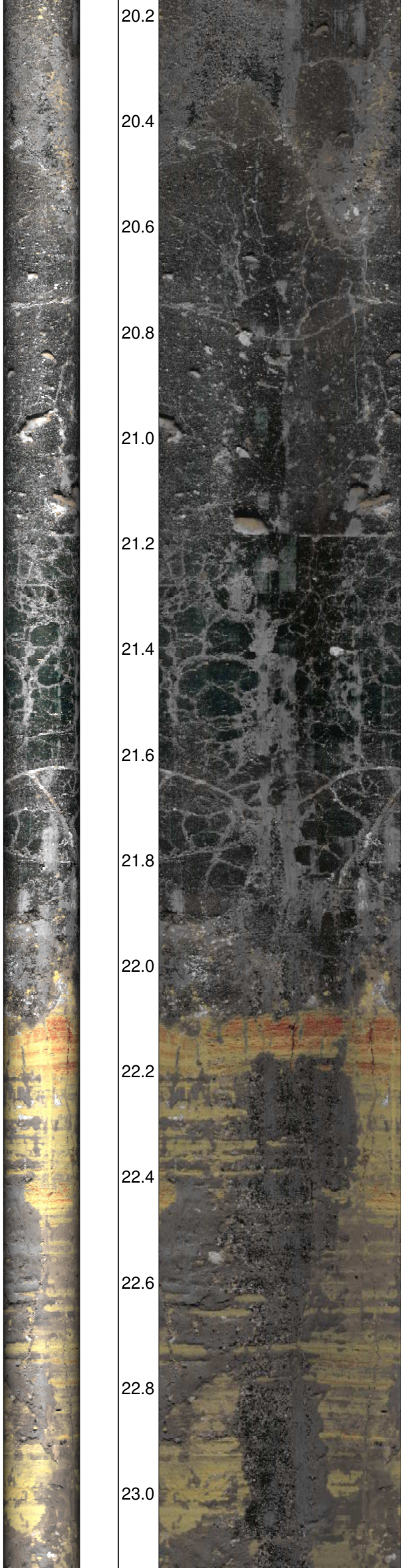


Wasserspiegel

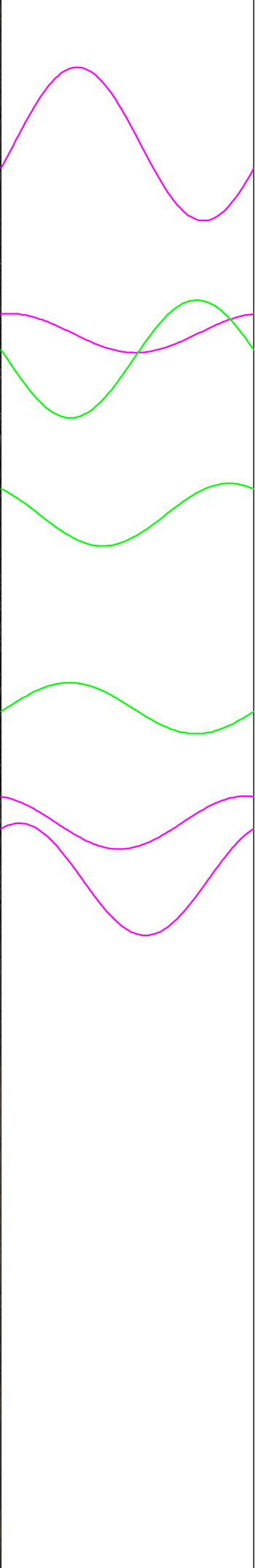


17.2
17.4
17.6
17.8
18.0
18.2
18.4
18.6
18.8
19.0
19.2
19.4
19.6
19.8
20.0





20.2
20.4
20.6
20.8
21.0
21.2
21.4
21.6
21.8
22.0
22.2
22.4
22.6
22.8
23.0



52
53
54
55
56
57
58



23.2

23.4

23.6

23.8

24.0

24.2

24.4

24.6

24.8

25.0

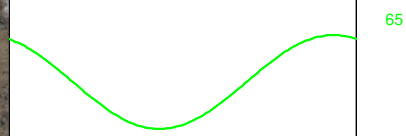
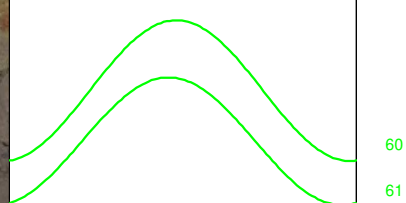
25.2

25.4

25.6

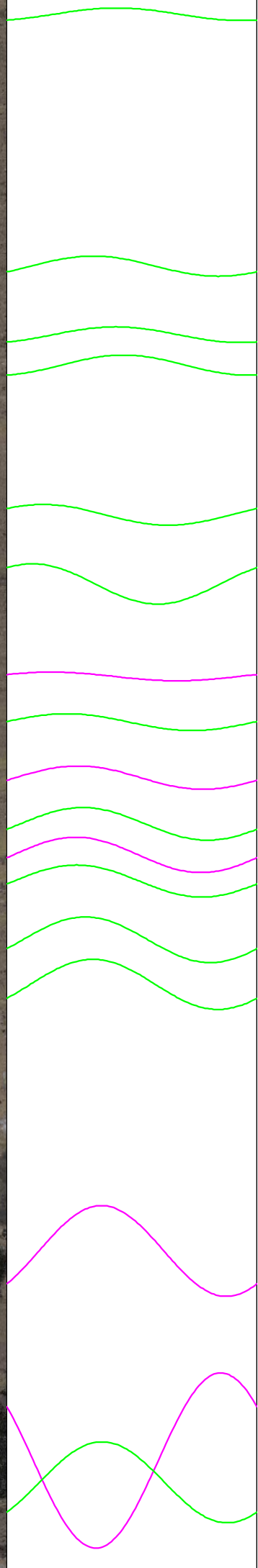
25.8

26.0

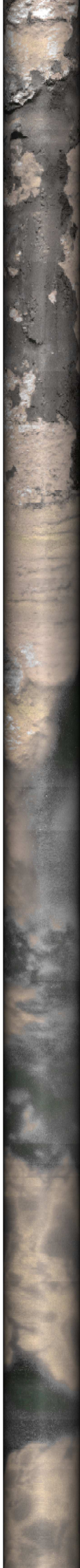




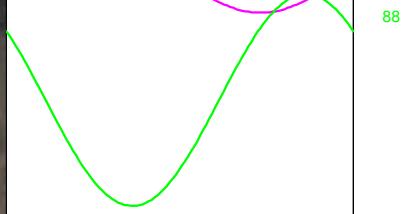
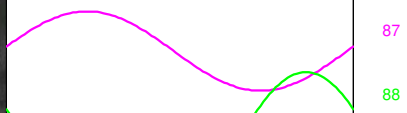
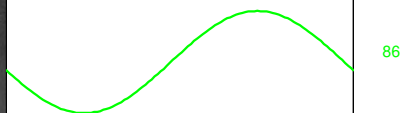
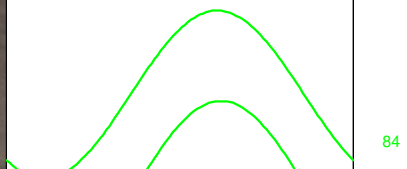
26.2
26.4
26.6
26.8
27.0
27.2
27.4
27.6
27.8
28.0
28.2
28.4
28.6
28.8
29.0



66
67
68
69
70
71
72
73
74
75
76
77
78
79
80
81
82



29.2
29.4
29.6
29.8
30.0
30.2
30.4
30.6
30.8
31.0
31.2
31.4
31.6
31.8
32.0



83

84

85

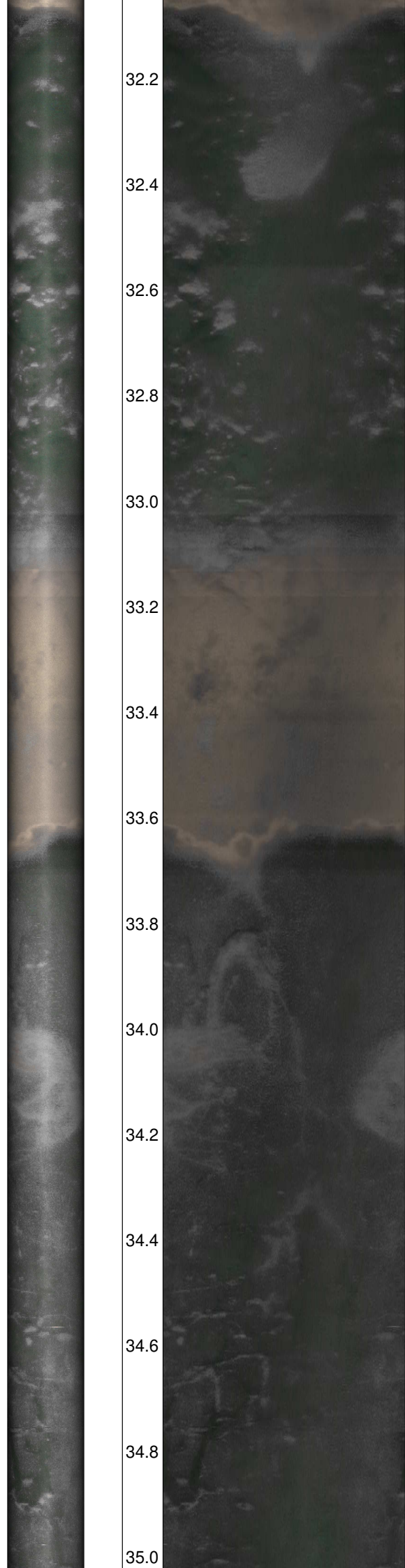
86

87

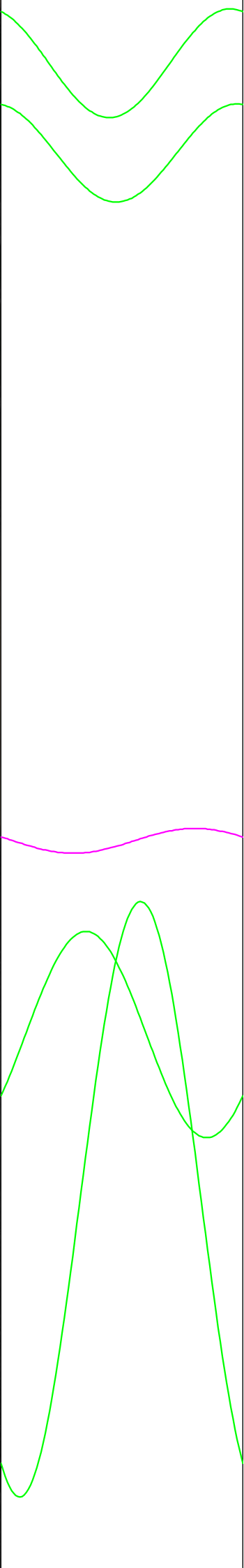
88

89

90



32.2
32.4
32.6
32.8
33.0
33.2
33.4
33.6
33.8
34.0
34.2
34.4
34.6
34.8
35.0



90
91
92
93
94

35.2

35.4

35.6

35.8

36.0

36.2

36.4

36.6

36.8

37.0

37.2

37.4

37.6

37.8

38.0

38.0

38.2

38.4

38.6

38.8

39.0

39.2