



Messprogramm
ETIBS® - Optischer Bohrlochscanner
ABF - Akustisches Bohrlochfernsehen

Erkundungsobjekt
Rhein-Main-Link, PFA HE2

Auftraggeber: Bohr- ArGe 3-5
Bohrung: P06-Mun-BK-0078
Ort: Münchhausen
Auftragsnummer: e-3679

Teufenmaßstab
1:10

Koordinaten


Rechtswert:
Hochwert:
Höhe ü. NN:

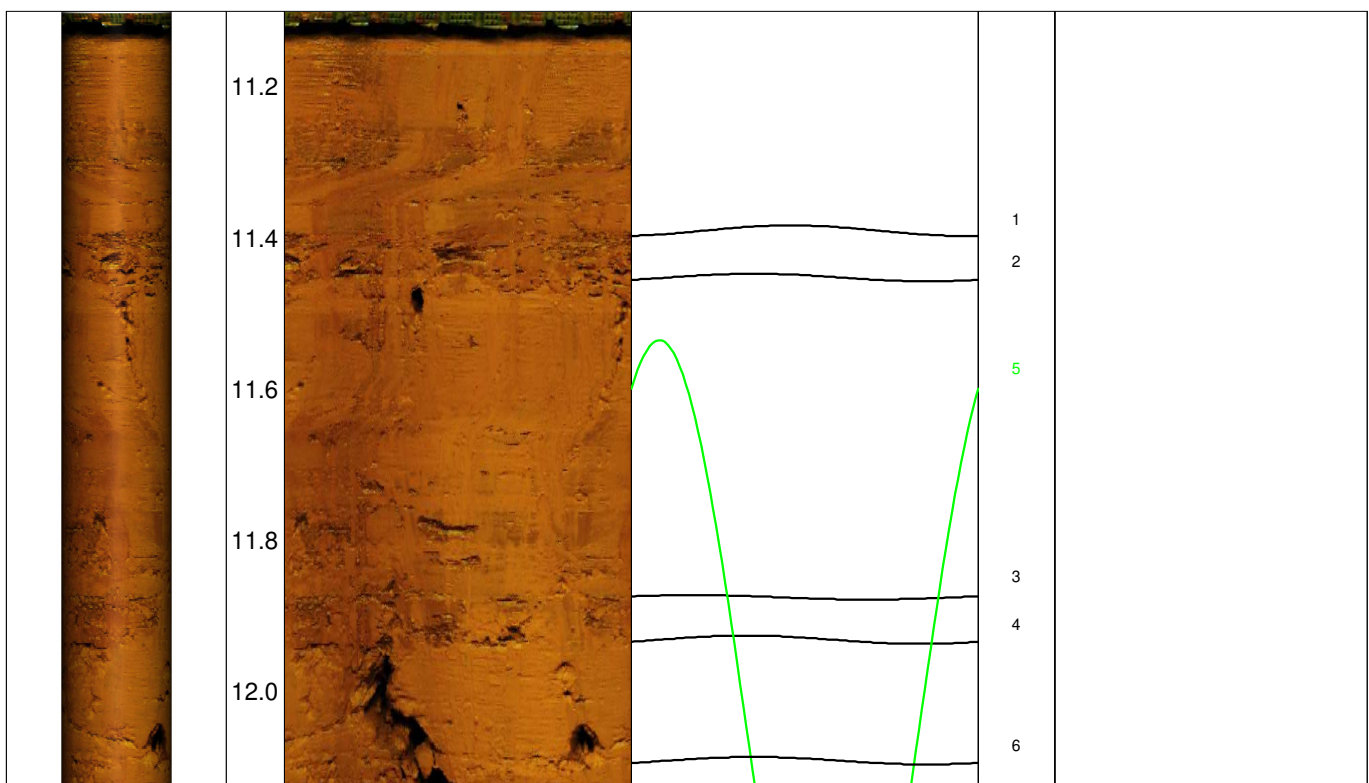
Messbezugspunkt: GOK

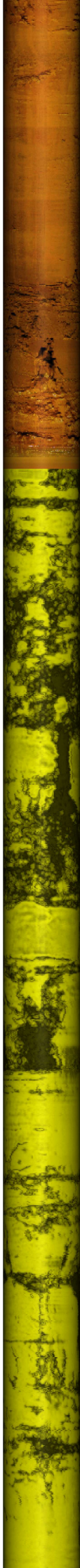
Messdatum:	16.04.2026	Bohrlochdurchmesser:	146 mm
Bohrteufe:	31.60 m (lt .BM)	Richtung der Bohrung:	vertikal
Messintervall:	11.10 m - 31.70 m (20.60 m)	Quelldatei:	Mun0078.blk / Mun0078.log
Verrohrung bis:	11.13 m	Messingenieur:	Hr. Newrzella
Wasserstand:	12.98 m	Bearbeiter:	Hr. Ertelt

Bemerkungen: Messintervall ETIBS: 11.10 m - 13.01 m (1.91 m)
Messintervall ABF: 13.01 - 31.70 (18.69 m)

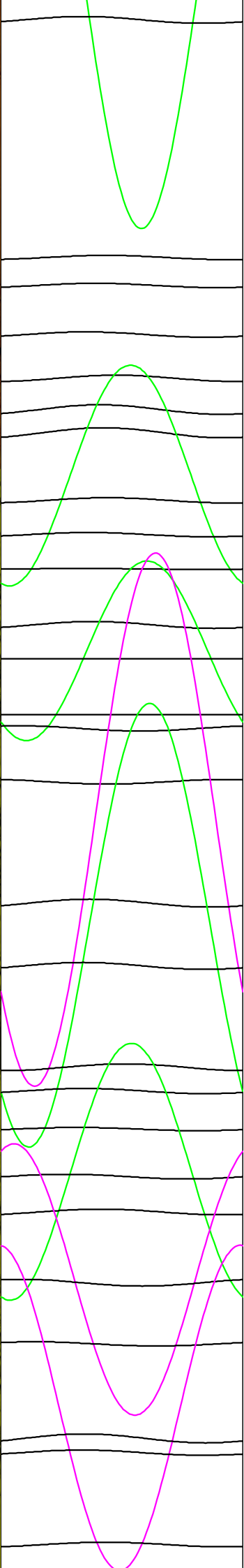
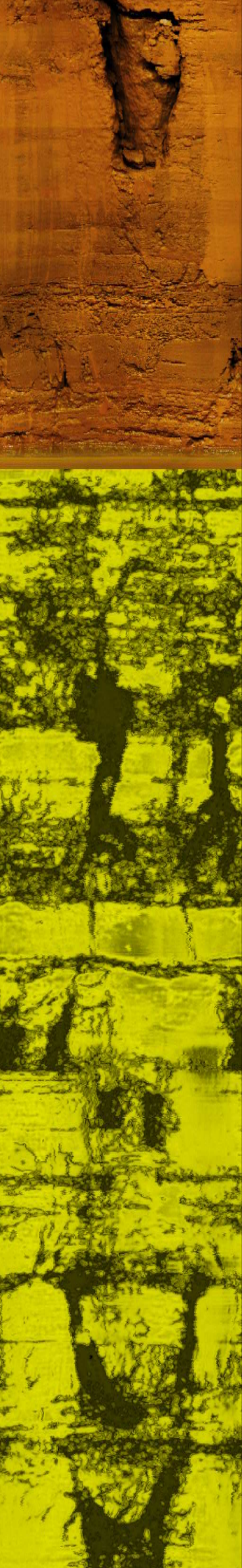
Trennflächen : schwarz - Schichtung / Schieferung
blau - Schrägschichtung
magenta - Klüfte
grün - Klüfte nur z. T. erkennbar

Pseudokern 	[m]	Bohrlochabwicklung					Trennflächenabwicklung					Nr.	Bemerkung
		N	O	S	W	N	N	O	S	W	N		



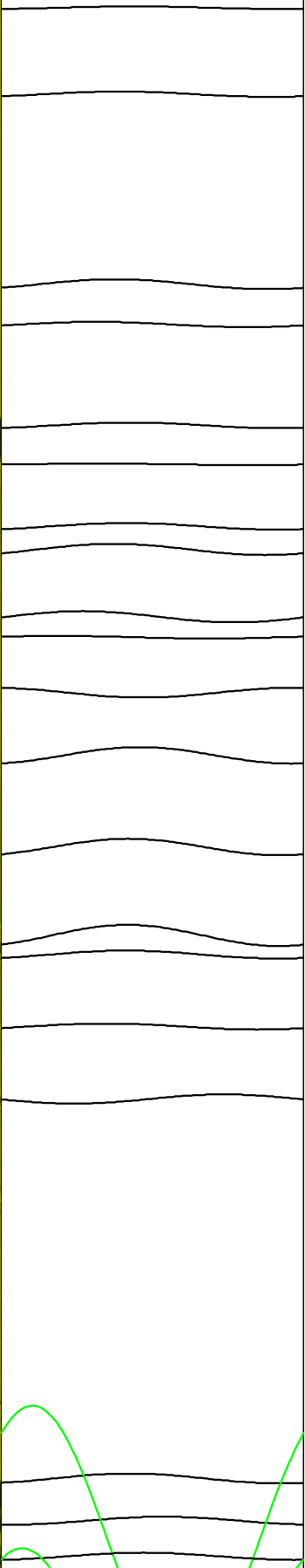
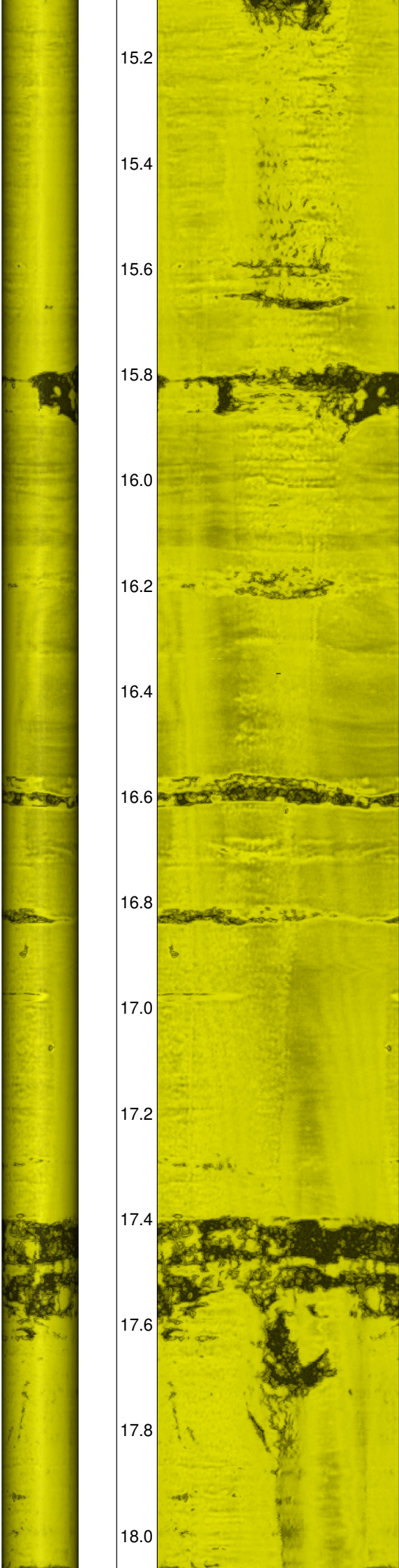


12.2
12.4
12.6
12.8
13.0
13.2
13.4
13.6
13.8
14.0
14.2
14.4
14.6
14.8
15.0

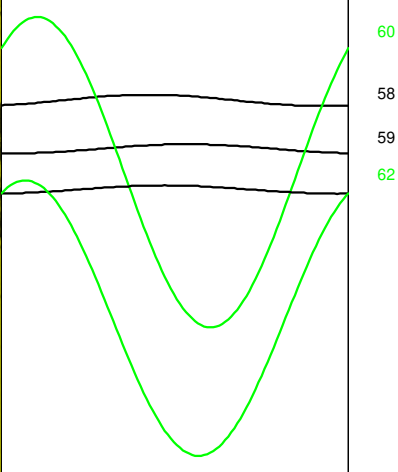


Wasserspiegel

15.2
15.4
15.6
15.8
16.0
16.2
16.4
16.6
16.8
17.0
17.2
17.4
17.6
17.8
18.0

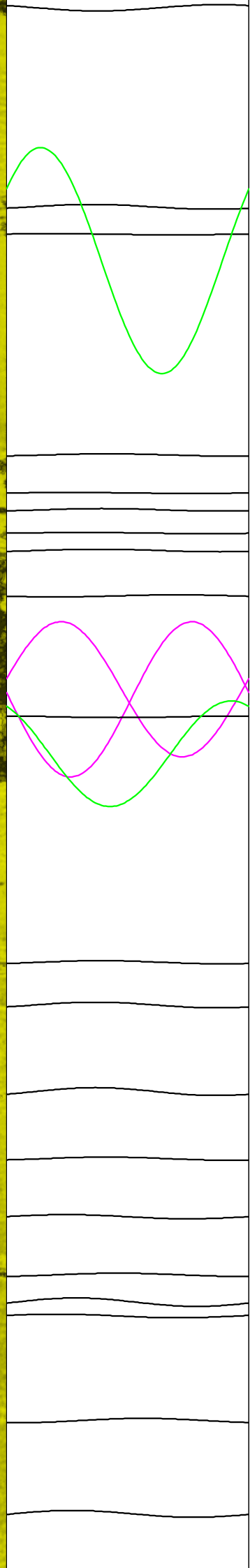


41
42
43
44
45
46
47
48
49
50
51
52
53
54
55
56
57
60
58
59
62
63

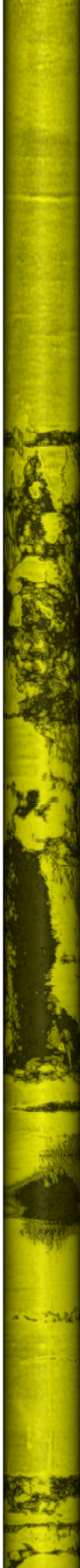




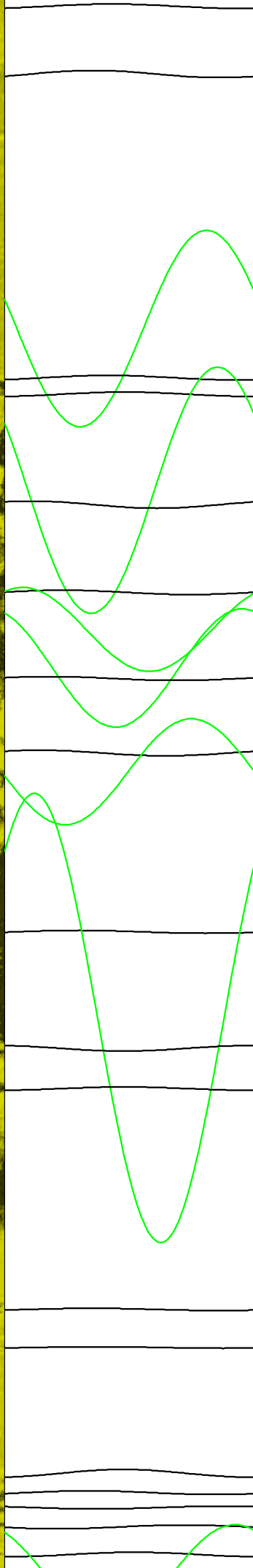
18.2
18.4
18.6
18.8
19.0
19.2
19.4
19.6
19.8
20.0
20.2
20.4
20.6
20.8
21.0



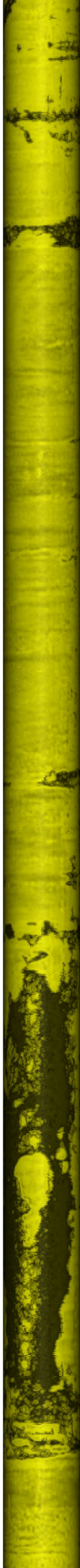
66
64
65
67
68
69
70
71
72
73
74
75
76
77
78
79
80
81
82
83
84
85
86



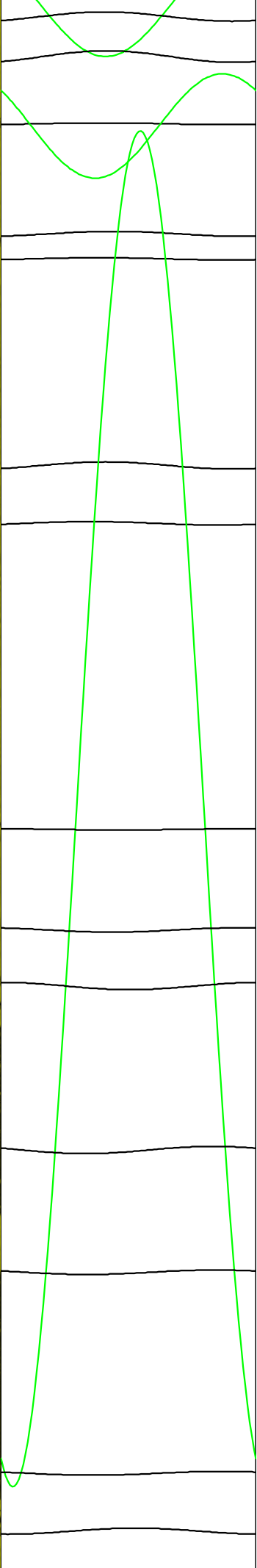
21.2
21.4
21.6
21.8
22.0
22.2
22.4
22.6
22.8
23.0
23.2
23.4
23.6
23.8
24.0



87
88
89
90
91
92
93
94
95
96
97
98
99
101
100
102
103
104
105
106
107
108
111
109
110



24.0
24.2
24.4
24.6
24.8
25.0
25.2
25.4
25.6
25.8
26.0
26.2
26.4
26.6
26.8



110
112
113
114
115
116
117
118
119
121
122
123
124
125
126
127

120

