


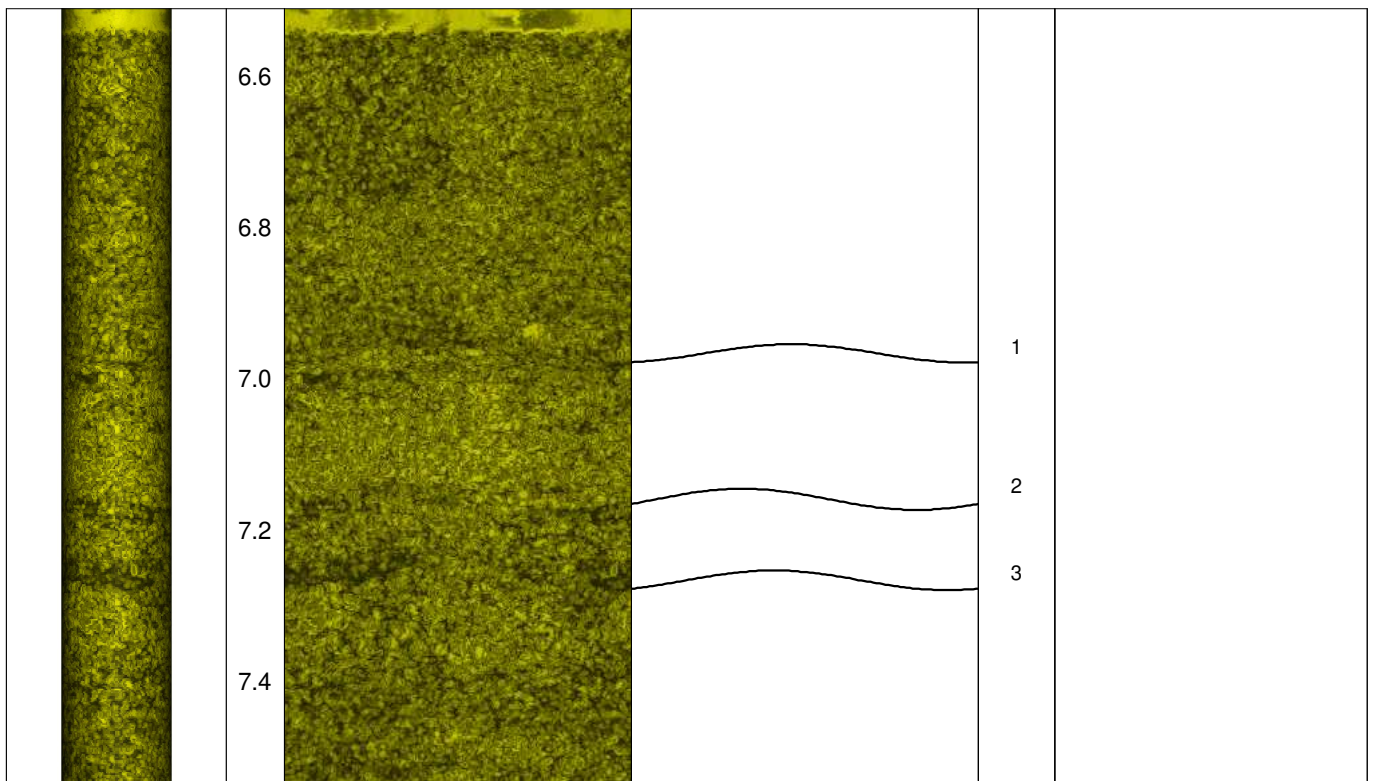


Geotechnisches Ingenieurbüro  
Prof. Fecker und Partner GmbH

Messprogramm		Erkundungsobjekt	
ABF Akustisches Bohrlochfernsehen		Rhein-Main-Link, PFA HE2	
<b>Auftraggeber:</b> Bohr- ArGe 3-5 <b>Bohrung:</b> P06-Fro-BK-0452 <b>Ort:</b> Fronhausen <b>Auftragsnummer:</b> e-3679		<b>Teufenmaßstab</b>  <b>1:10</b>  <b>Messbezugspunkt:</b> GOK	<b>Koordinaten</b>  <b>Rechtswert:</b> <b>Hochwert:</b> <b>Höhe ü. NN:</b>
Messdatum:	11.03.2026	Bohrlochdurchmesser:	146 mm
Bohrteufe:	30.00 (lt. BM)	Richtung der Bohrung:	vertikal
Messintervall:	6.51 m - 29.73 m (23.22 m)	Quelldatei:	Fro0452.log
Verrohrung bis:	6.54 m	Messingenieur:	Hr. Newrzella
Wasserstand:	nicht erfasst	Bearbeiter:	Hr. Ertelt

<b>Bemerkungen:</b>
<b>Trennflächen :</b> schwarz - Schichtung / Schieferung magenta - Klüfte grün - Klüfte nur z. T. erkennbar

Pseudokern 	[m]	Bohrlochabwicklung					Trennflächenabwicklung					Nr.	Bemerkung
		N	O	S	W	N	N	O	S	W	N		



7.6

7.8

8.0

8.2

8.4

8.6

8.8

9.0

9.2

9.4

9.6

9.8

10.0

10.2

10.4

4

5

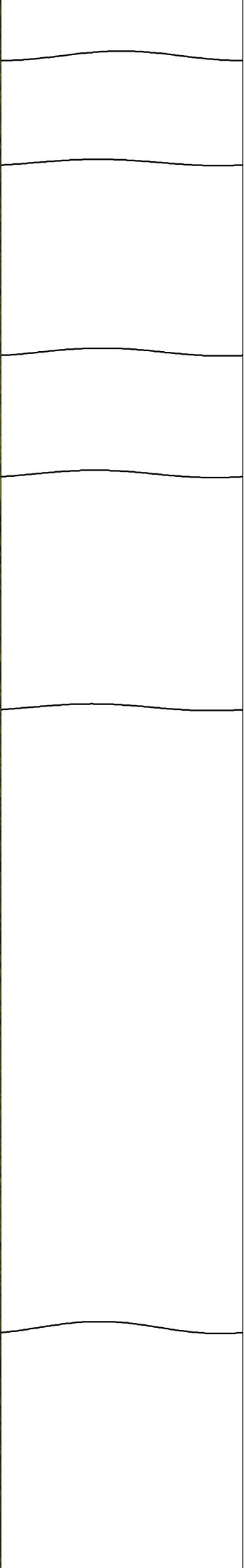
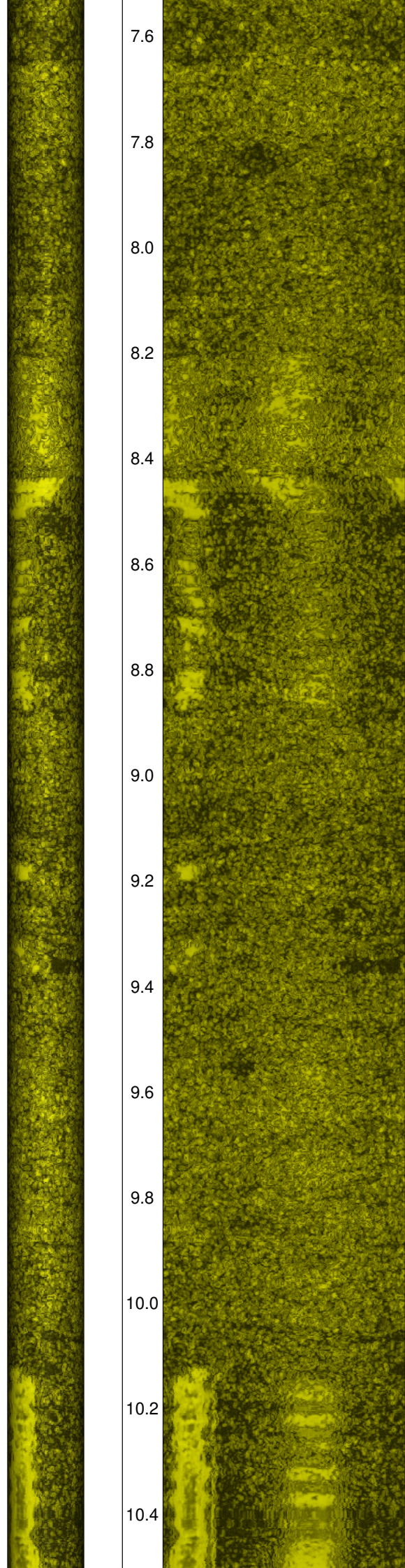
6

7

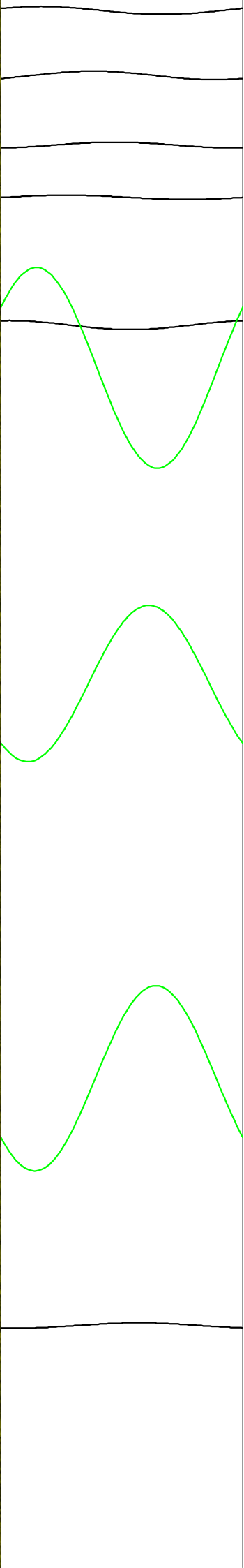
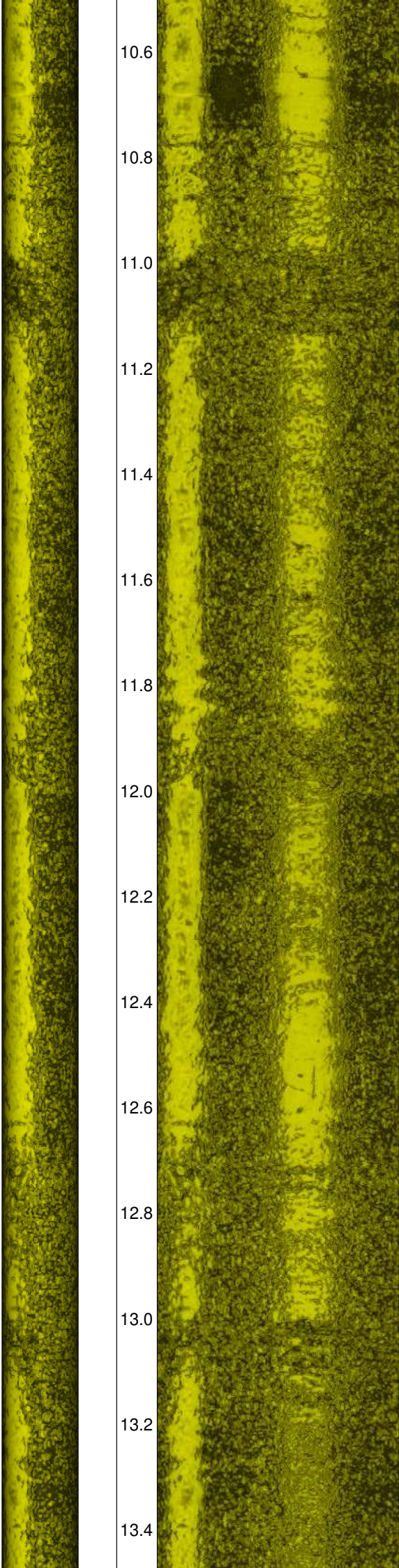
8

9

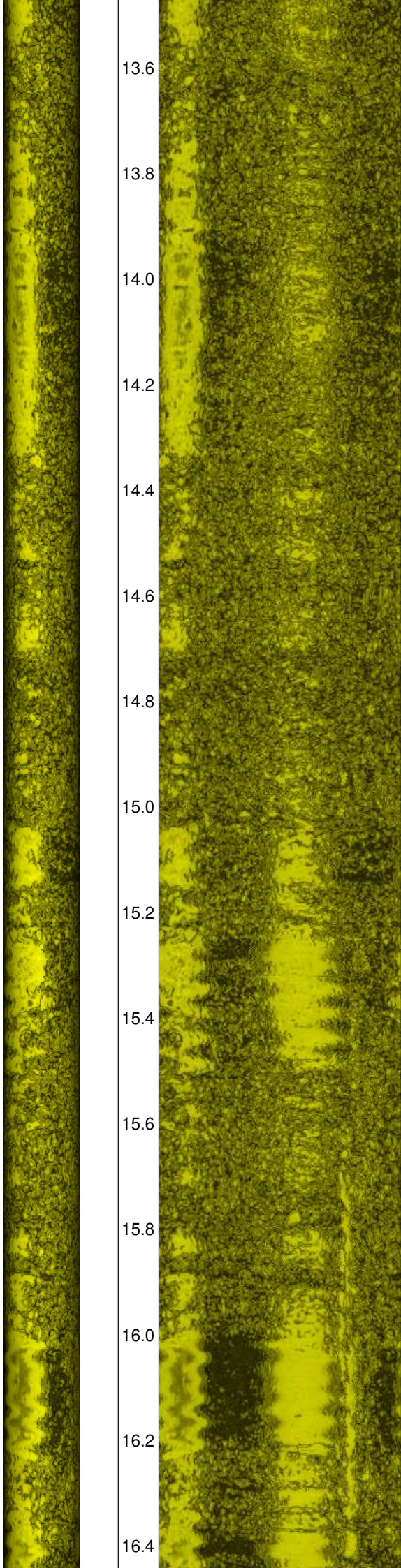
10



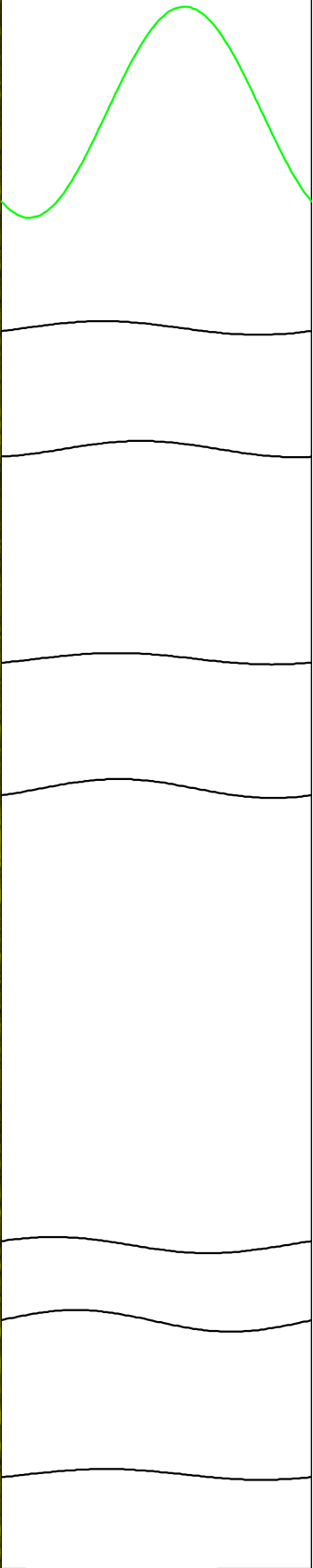
10.6  
10.8  
11.0  
11.2  
11.4  
11.6  
11.8  
12.0  
12.2  
12.4  
12.6  
12.8  
13.0  
13.2  
13.4



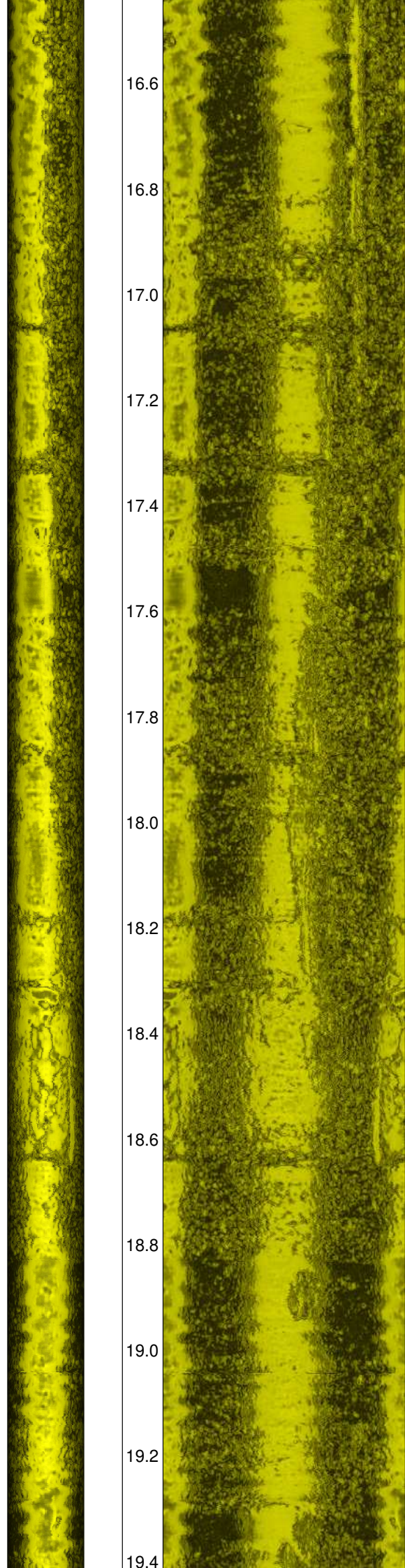
11  
12  
13  
14  
15  
16  
17  
18



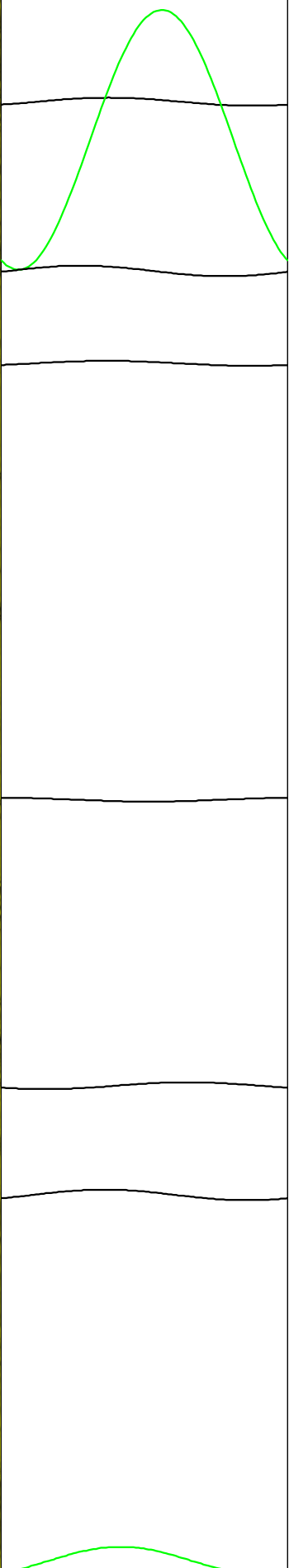
13.6  
13.8  
14.0  
14.2  
14.4  
14.6  
14.8  
15.0  
15.2  
15.4  
15.6  
15.8  
16.0  
16.2  
16.4

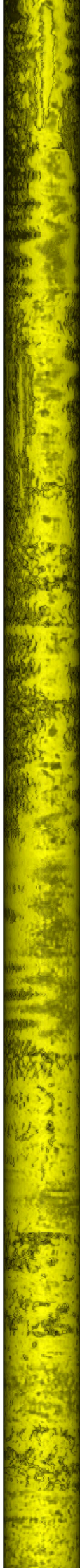


19  
20  
21  
22  
23  
24  
25  
26  
27



16.6  
16.8  
17.0  
17.2  
17.4  
17.6  
17.8  
18.0  
18.2  
18.4  
18.6  
18.8  
19.0  
19.2  
19.4





19.6

19.8

20.0

20.2

20.4

20.6

20.8

21.0

21.2

21.4

21.6

21.8

22.0

22.2

36

37

38

39

40

41

42

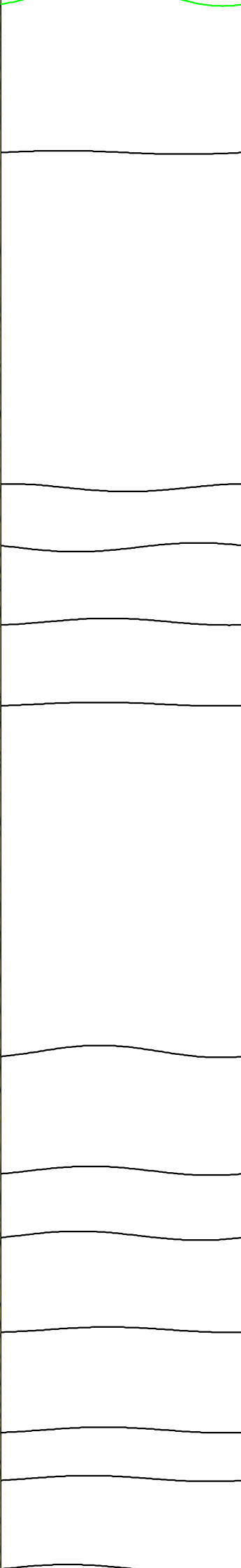
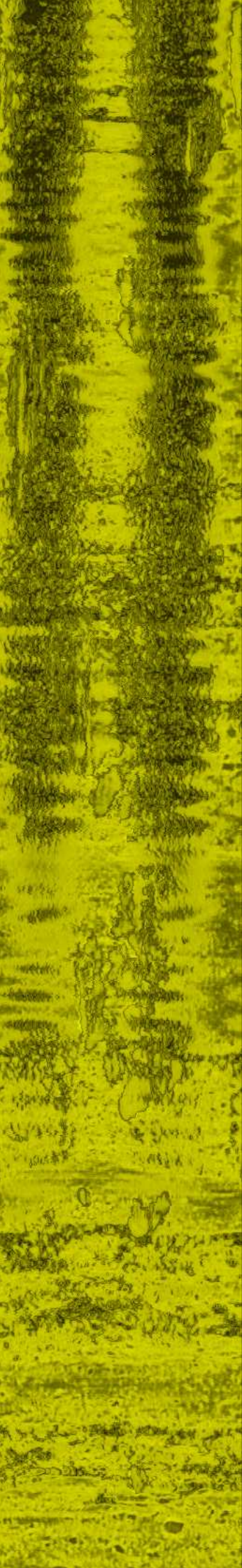
43

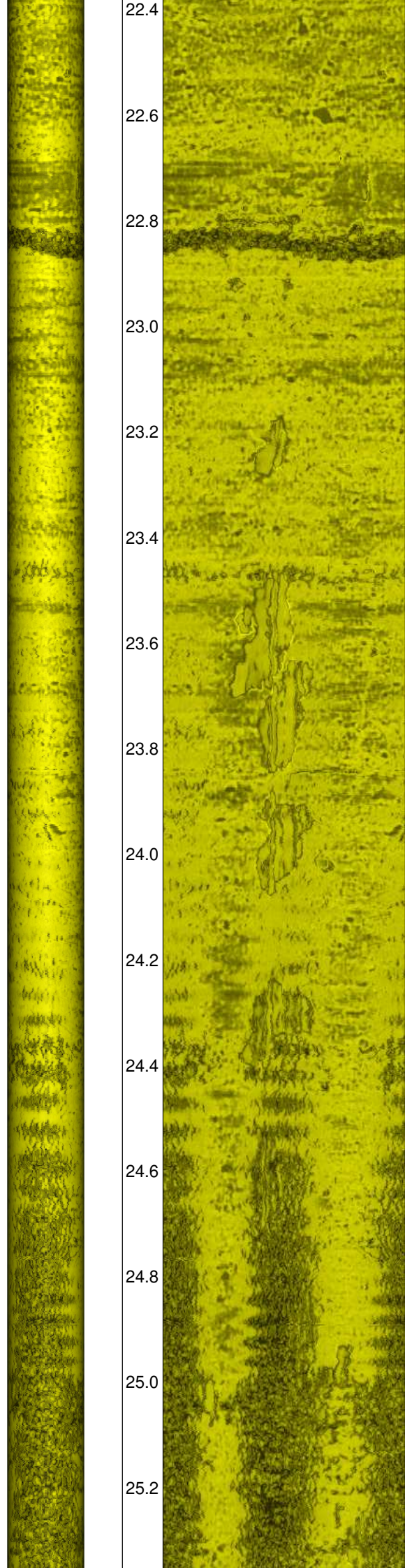
44

45

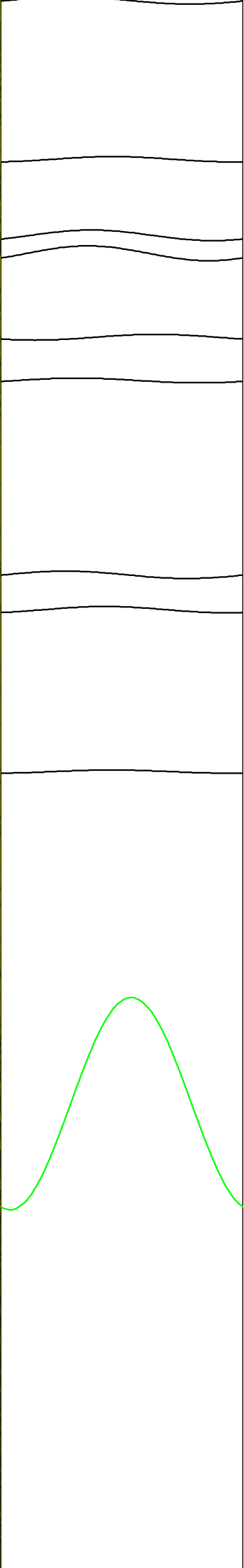
46

47



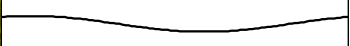
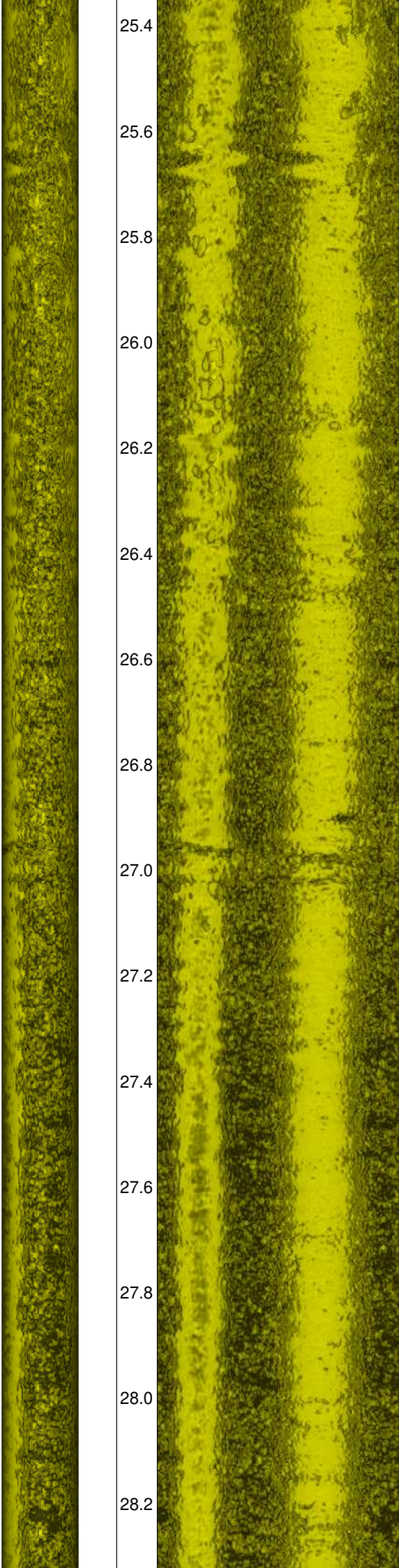


22.4  
22.6  
22.8  
23.0  
23.2  
23.4  
23.6  
23.8  
24.0  
24.2  
24.4  
24.6  
24.8  
25.0  
25.2

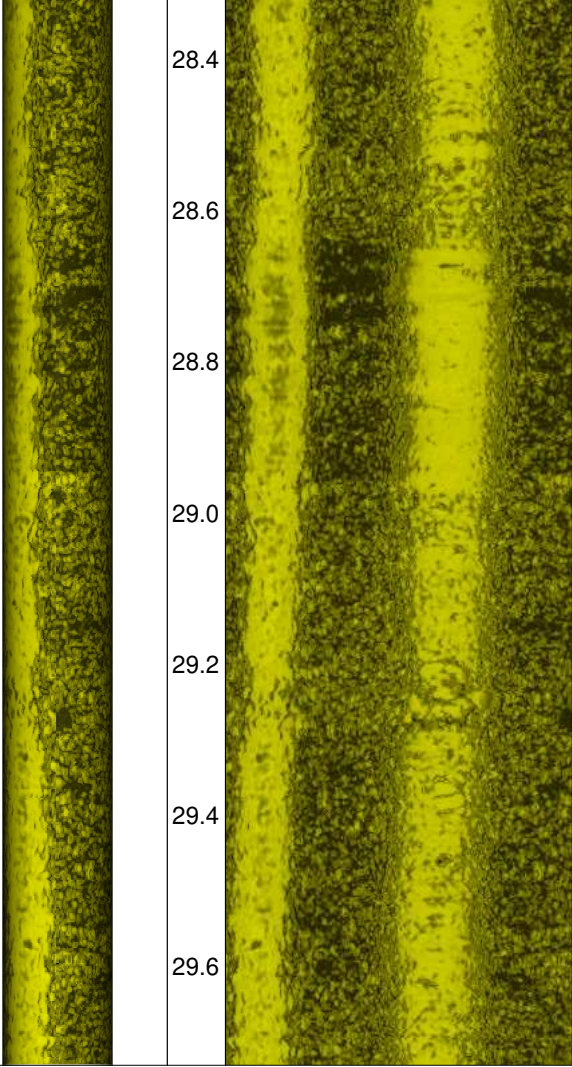


48  
49  
50  
51  
52  
53  
54  
55  
56

25.4  
25.6  
25.8  
26.0  
26.2  
26.4  
26.6  
26.8  
27.0  
27.2  
27.4  
27.6  
27.8  
28.0  
28.2



28.4  
28.6  
28.8  
29.0  
29.2  
29.4  
29.6



58