


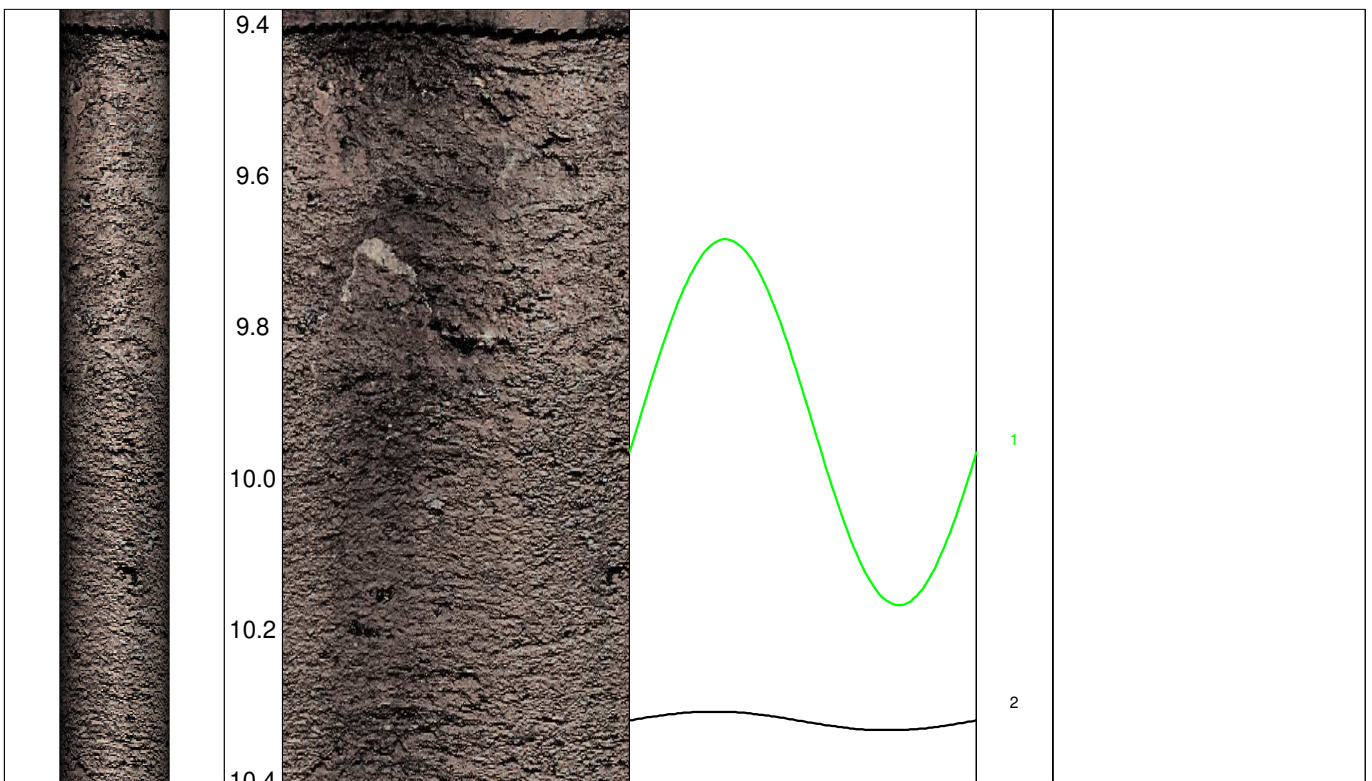


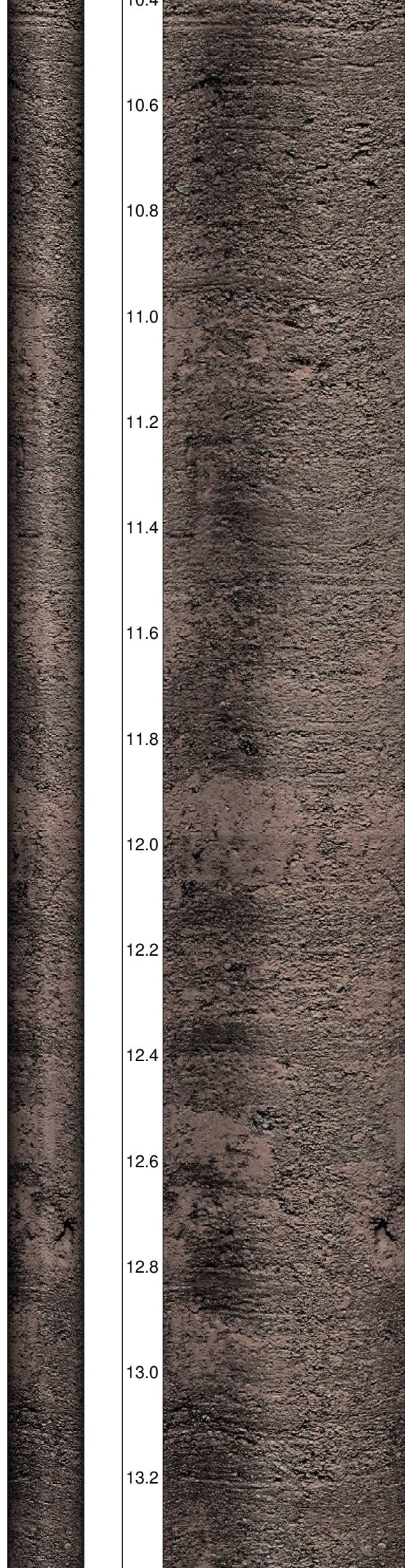
Geotechnisches Ingenieurbüro
Prof. Fecker und Partner GmbH

Messprogramm		Erkundungsobjekt	
ETIBS [®] - Optischer Bohrlochscanner		Rhein-Main-Link, PFA HE2	
Auftraggeber: Bohr- ArGe 3-5 Bohrung: P06-Fro-BK-0400 Ort: Fronhausen Auftragsnummer: e-3679		Teufenmaßstab 1:10 Messbezugspunkt: GOK	Koordinaten Rechtswert: Hochwert: Höhe ü. NN:
Messdatum:	18.03.2026	Bohrlochdurchmesser:	146 mm
Bohrteufe:	46.00 m (lt. BM)	Richtung der Bohrung:	vertikal
Messintervall:	9.38 m - 45.17 m (35.79 m)	Quelldatei:	Fro0400.blk
Verrohrung bis:	9.41 m	Messingenieur:	Hr. Newrzella
Wasserstand:	15.25 m	Bearbeiter:	Hr. Ertelt

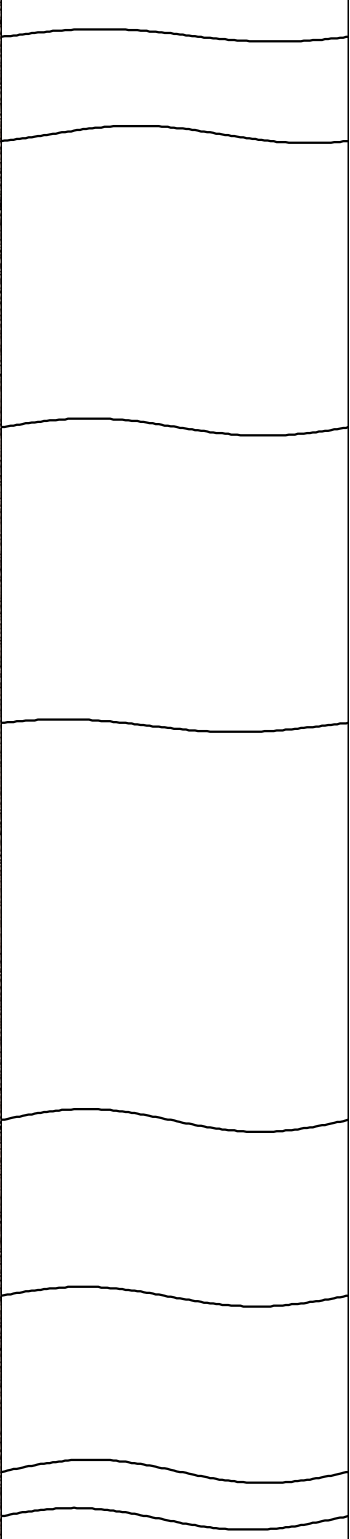
Bemerkungen:	
Trennflächen :	schwarz - Schichtung / Schieferung blau - Schrägschichtung magenta - Klüfte grün - Klüfte nur z. T. erkennbar

Pseudokern	Bohrlochabwicklung	Trennflächenabwicklung	Nr.	Bemerkung
	[m] N O S W N	N O S W N		

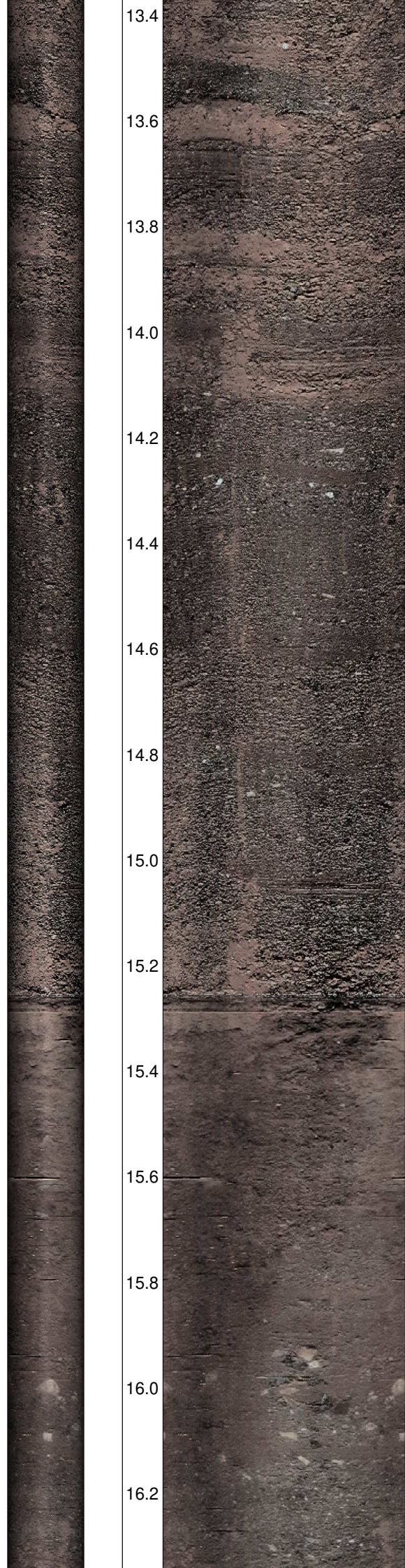




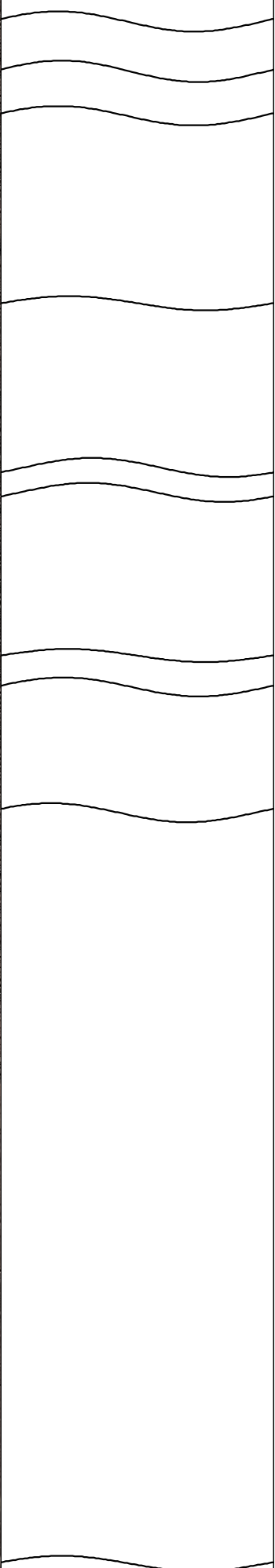
10.4
10.6
10.8
11.0
11.2
11.4
11.6
11.8
12.0
12.2
12.4
12.6
12.8
13.0
13.2



3
4
5
6
7
8
9
10

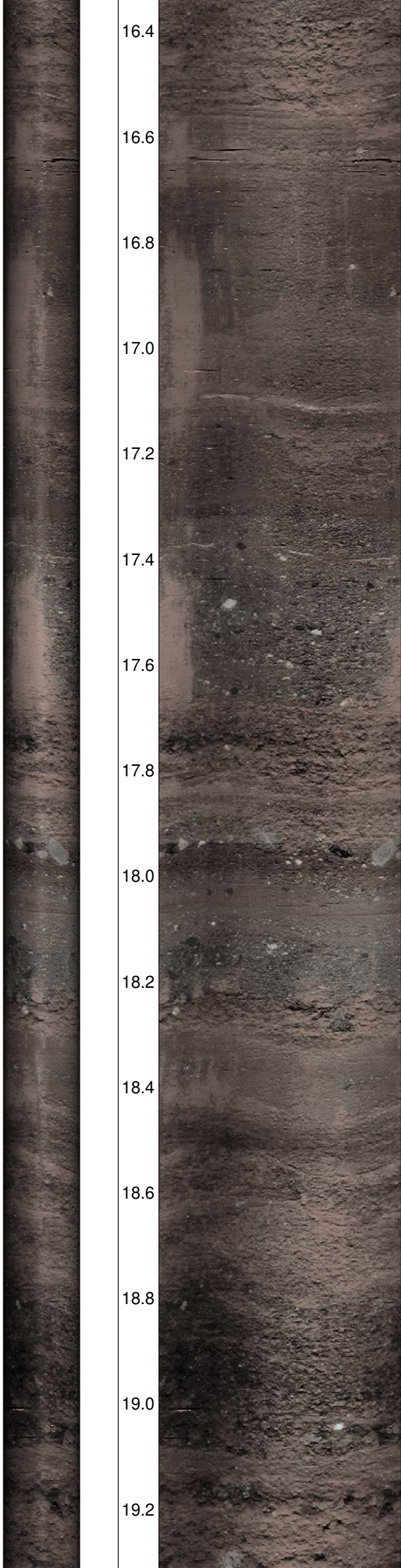


13.4
13.6
13.8
14.0
14.2
14.4
14.6
14.8
15.0
15.2
15.4
15.6
15.8
16.0
16.2



11
12
13
14
15
16
17
18
19
20

Wasserspiegel



16.4

16.6

16.8

17.0

17.2

17.4

17.6

17.8

18.0

18.2

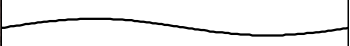
18.4

18.6

18.8

19.0

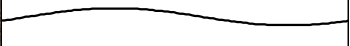
19.2



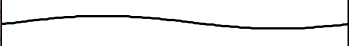
21



22



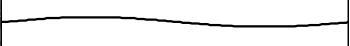
23



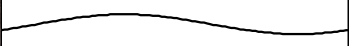
24



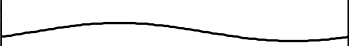
25



26



27



28



29



30



31



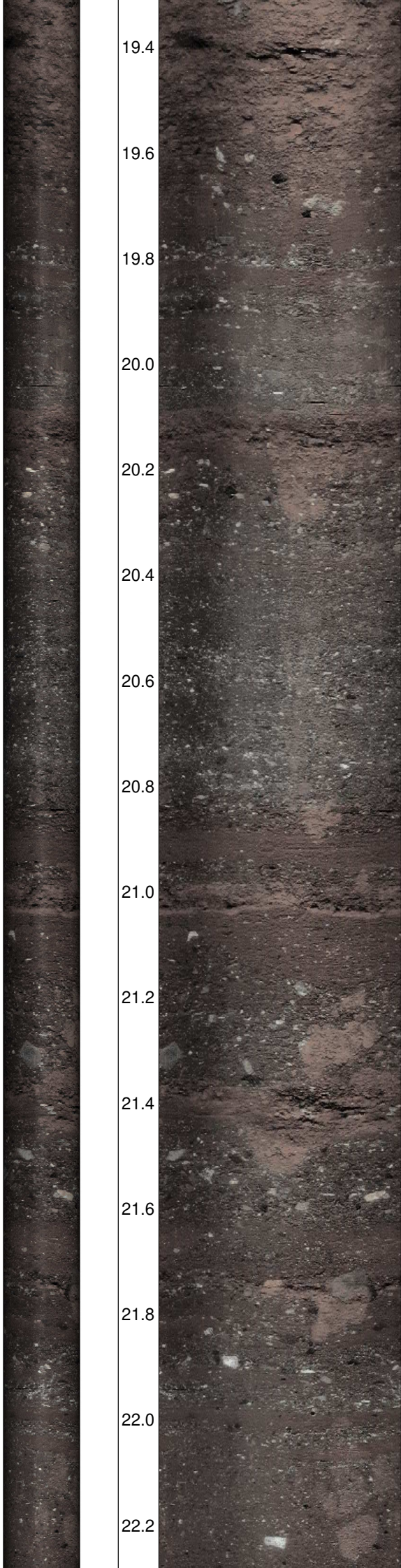
32



33



34



19.4

19.6

19.8

20.0

20.2

20.4

20.6

20.8

21.0

21.2

21.4

21.6

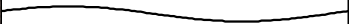
21.8

22.0

22.2



35



36



37



38



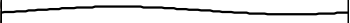
39



40



41



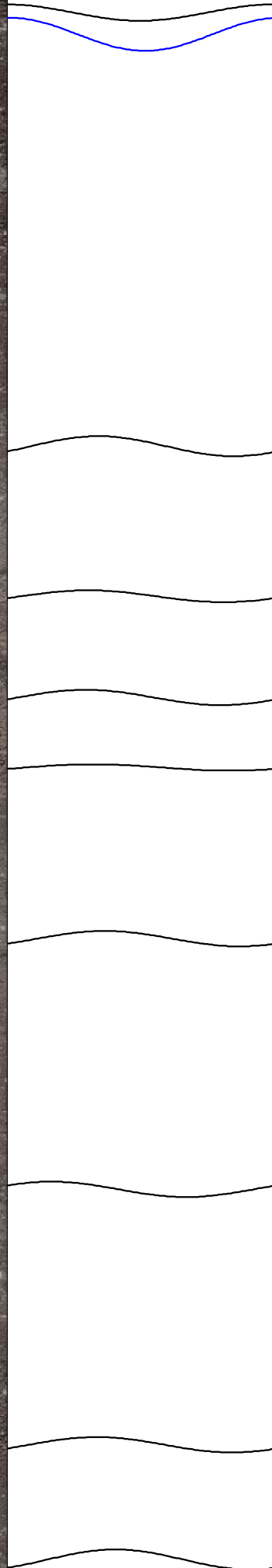
42



43



22.4
22.6
22.8
23.0
23.2
23.4
23.6
23.8
24.0
24.2
24.4
24.6
24.8
25.0
25.2



44
45
46
47
48
49
50
51
52
53



25.4

25.6

25.8

26.0

26.2

26.4

26.6

26.8

27.0

27.2

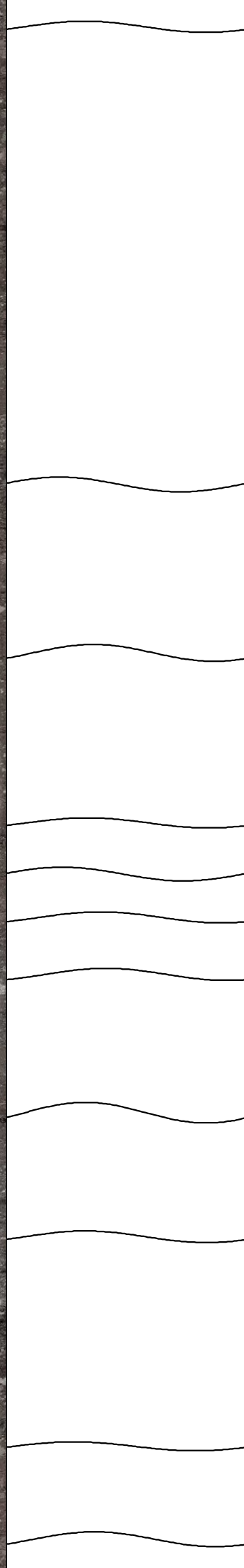
27.4

27.6

27.8

28.0

28.2



54

55

56

57

58

59

60

61

62

63

64



28.4

28.6

28.8

29.0

29.2

29.4

29.6

29.8

30.0

30.2

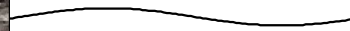
30.4

30.6

30.8

31.0

31.2



65



66



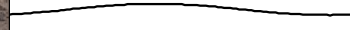
67



68



69



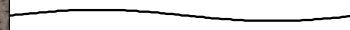
70



71



72



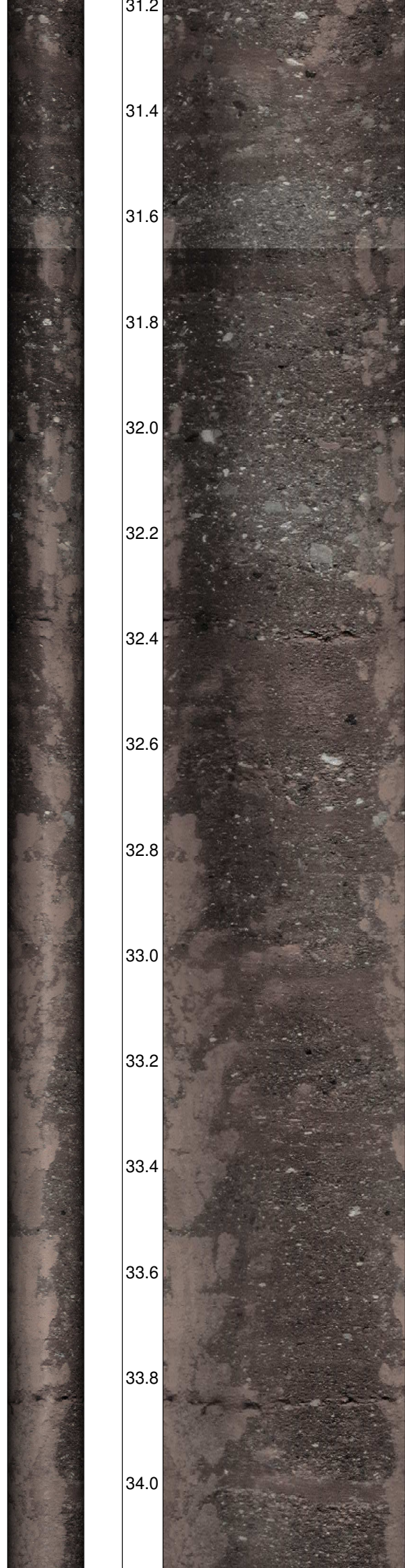
73



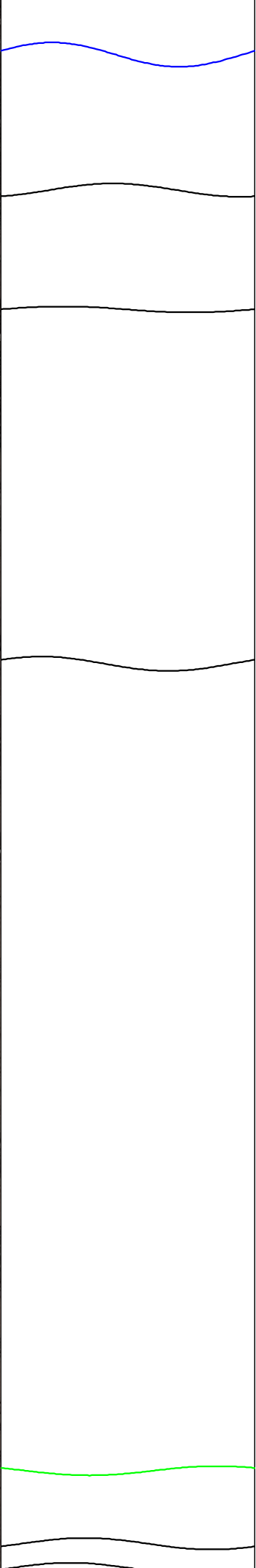
74



75

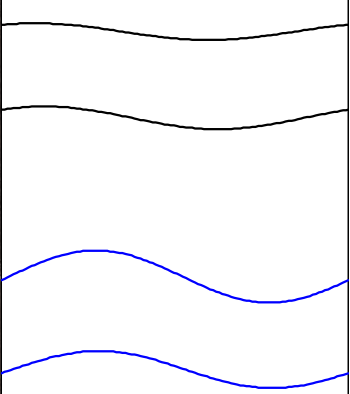
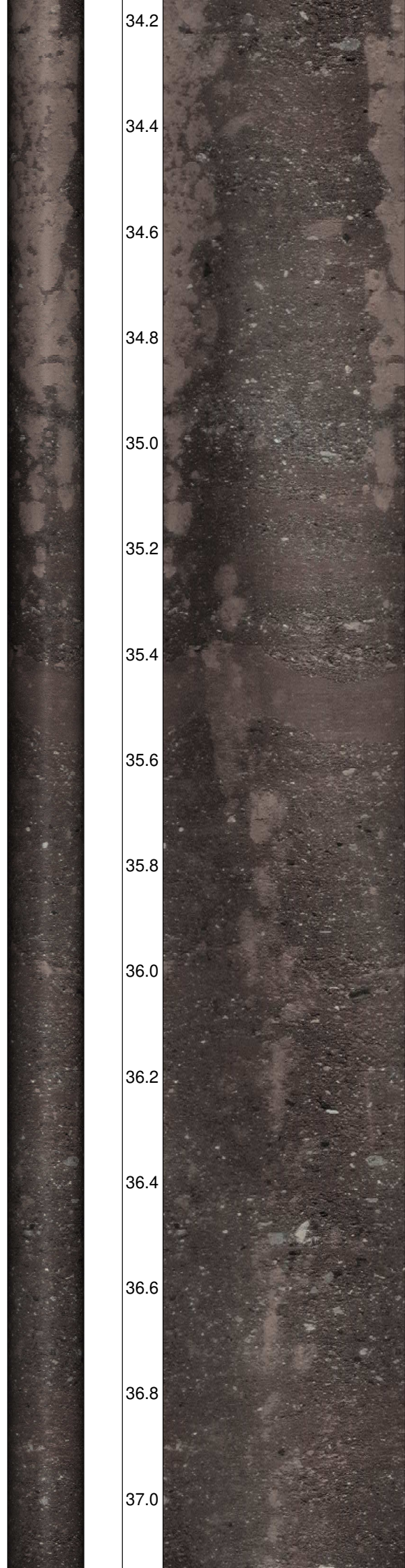


31.2
31.4
31.6
31.8
32.0
32.2
32.4
32.6
32.8
33.0
33.2
33.4
33.6
33.8
34.0



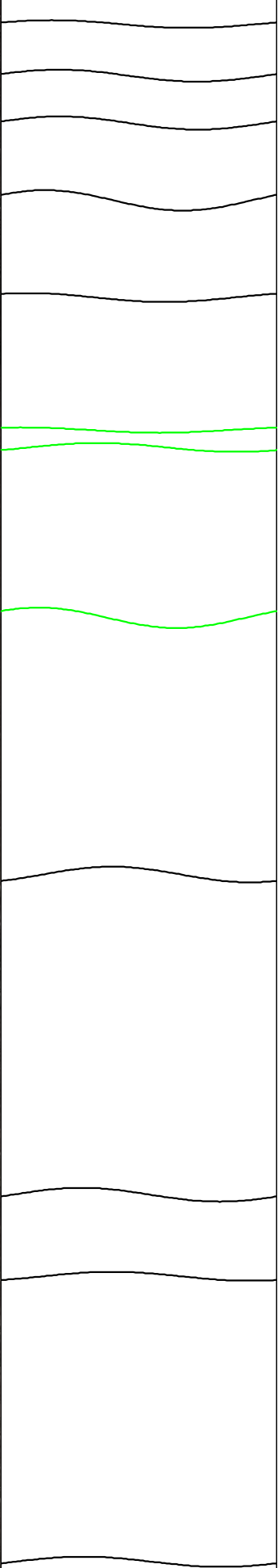
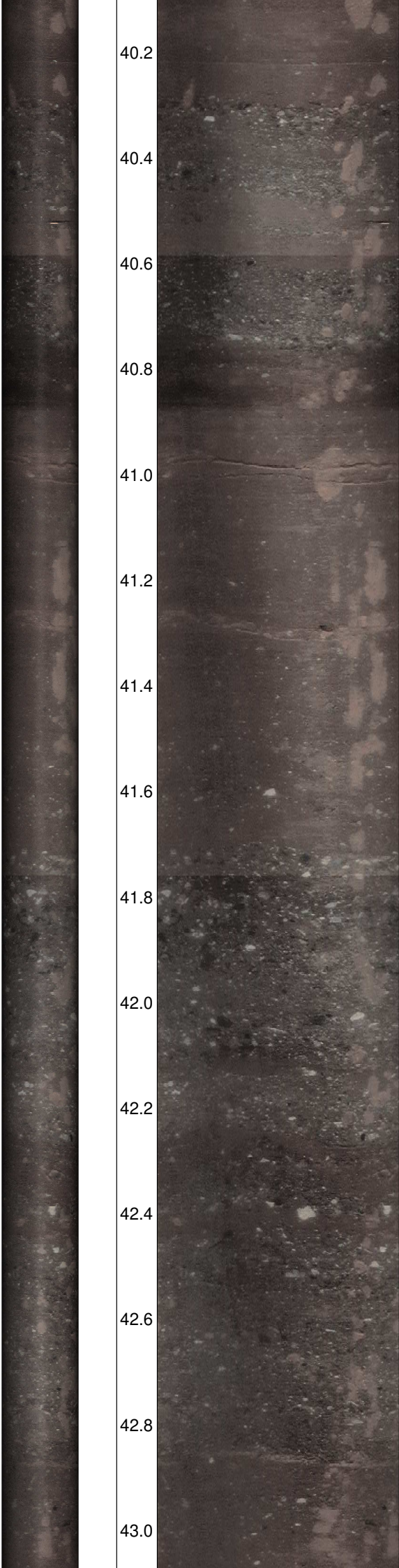
76
77
78
79
80
81
82

34.2
34.4
34.6
34.8
35.0
35.2
35.4
35.6
35.8
36.0
36.2
36.4
36.6
36.8
37.0



83
84
85
86

40.2
40.4
40.6
40.8
41.0
41.2
41.4
41.6
41.8
42.0
42.2
42.4
42.6
42.8
43.0



94
95
96
97
98
99
100
101
102
103
104
105

43.2

43.4

43.6

43.8

44.0

44.2

44.4

44.6

44.8

45.0

106

