



Messprogramm
ETIBS® - Optischer Bohrlochscanner
ABF - Akustisches Bohrlochfernsehen

Erkundungsobjekt
Rhein-Main-Link, PFA HE2

Auftraggeber: Bohr- ArGe 3-5
Bohrung: P06-Fro-BK-0399
Ort: Fronhausen
Auftragsnummer: e-3679

Teufenmaßstab
1:10


Koordinaten
Rechtswert:
Hochwert:
Höhe ü. NN:

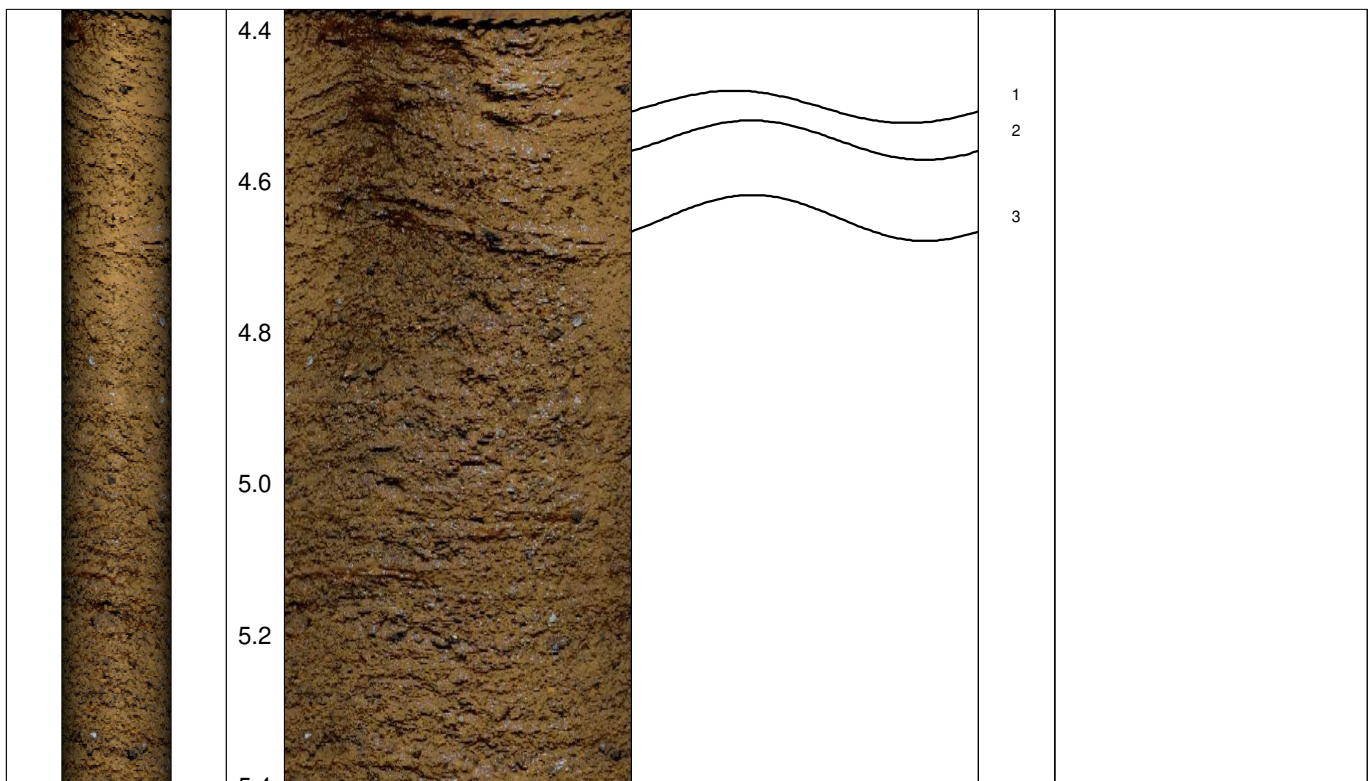
Messbezugspunkt: GOK

Messdatum:	09.03.2026	Bohrlochdurchmesser:	146 mm
Bohrteufe:	35.00 m (lt. BM)	Richtung der Bohrung:	vertikal
Messintervall:	4.37 m - 33.73 m (29.36 m)	Quelldatei:	Fro0399.blk / Fro0399.log
Verrohrung bis:	4.40 m	Messingenieur:	Hr. Newrzella
Wasserstand:	9.93 m	Bearbeiter:	Fr. Sagmajster

Bemerkungen: Messintervall ETIBS: 4.37 m - 12.08 m (7.71 m)
Messintervall ABF: 12.08 m - 33.73 m (21.65 m)

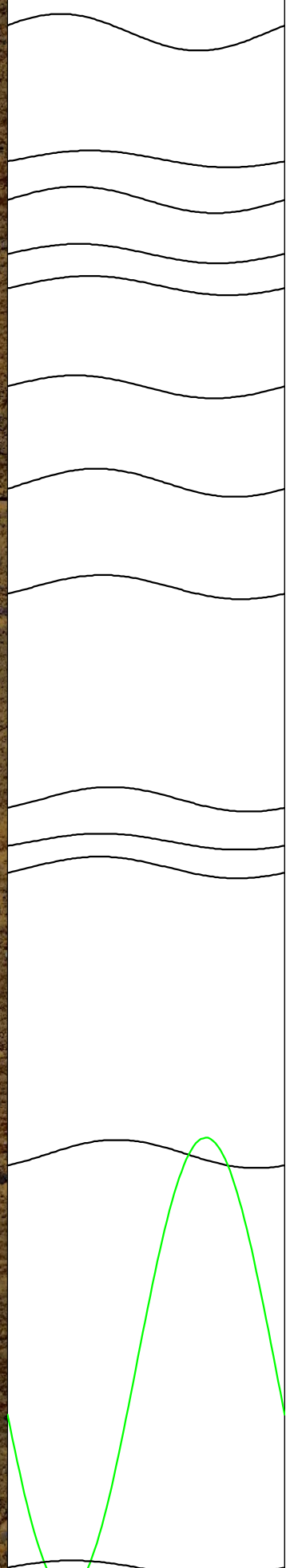
Trennflächen : schwarz - Schichtung / Schieferung
blau - Schrägschichtung
magenta - Klüfte
grün - Klüfte nur z. T. erkennbar

Pseudokern 	[m]	Bohrlochabwicklung					Trennflächenabwicklung					Nr.	Bemerkung
		N	O	S	W	N	N	O	S	W	N		

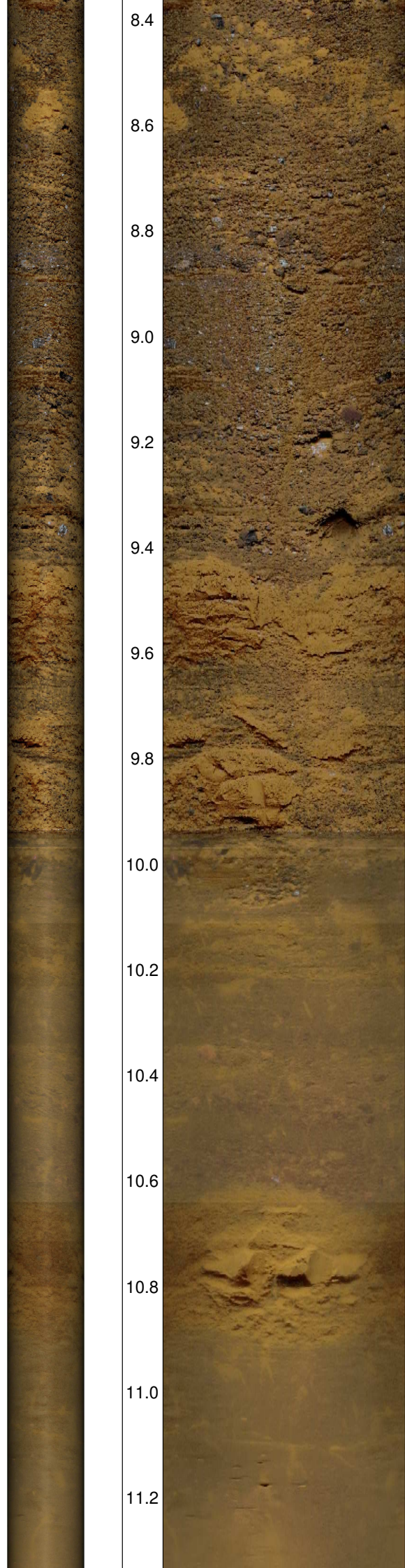




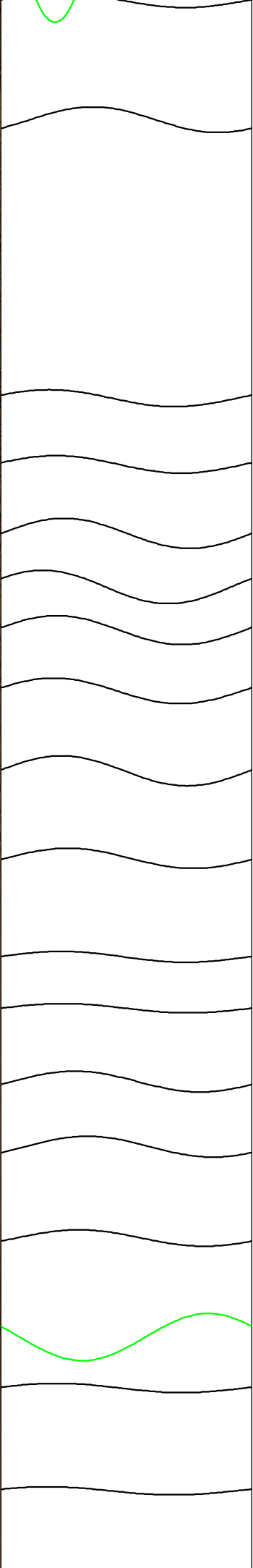
5.4
5.6
5.8
6.0
6.2
6.4
6.6
6.8
7.0
7.2
7.4
7.6
7.8
8.0
8.2



4
5
6
7
8
9
10
11
12
13
14
15
16
17

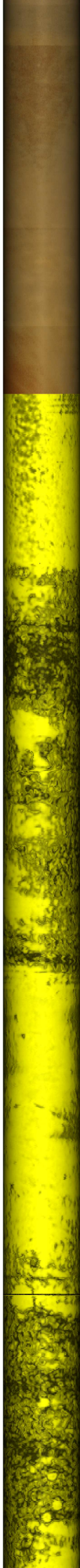


8.4
8.6
8.8
9.0
9.2
9.4
9.6
9.8
10.0
10.2
10.4
10.6
10.8
11.0
11.2

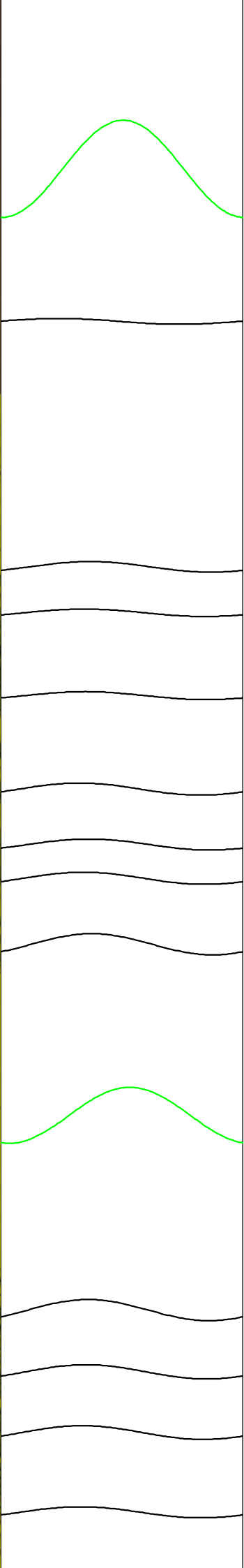
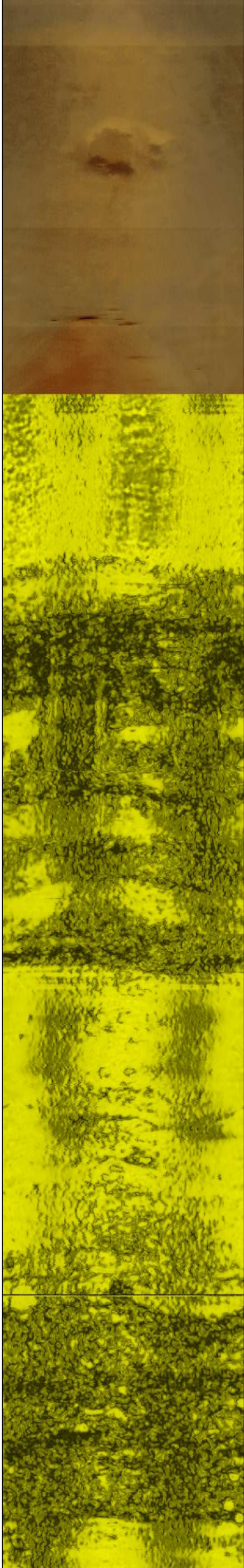


18
19
20
21
22
23
24
25
26
27
28
29
30
31
32
33
34
35

Wasserspiegel

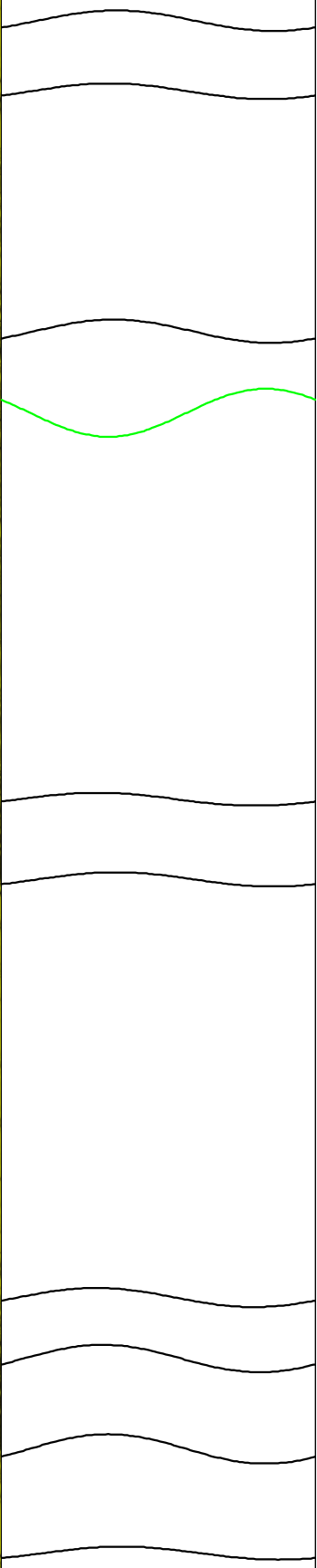
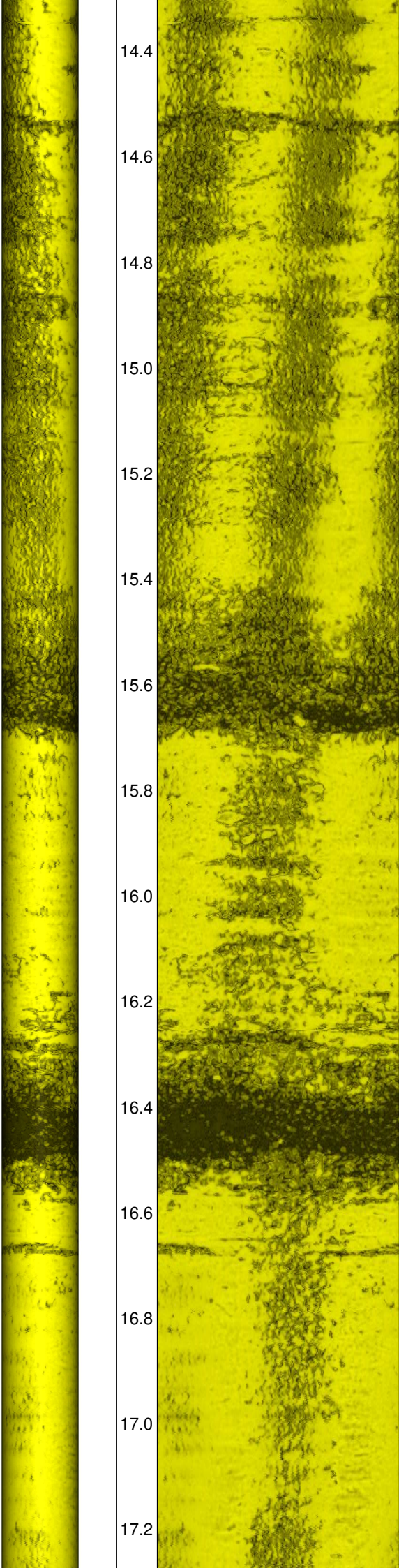


11.4
11.6
11.8
12.0
12.2
12.4
12.6
12.8
13.0
13.2
13.4
13.6
13.8
14.0
14.2

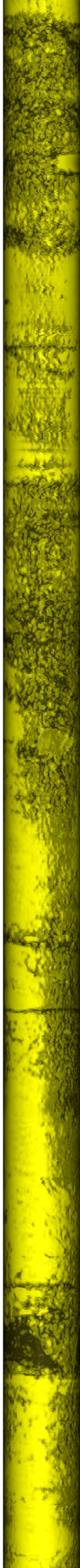


36
37
38
39
40
41
42
43
44
45
46
47
48
49

14.4
14.6
14.8
15.0
15.2
15.4
15.6
15.8
16.0
16.2
16.4
16.6
16.8
17.0
17.2



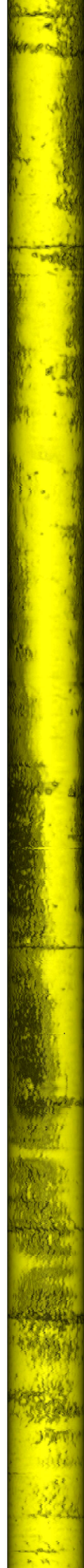
50
51
52
53
54
55
56
57
58
59



17.4
17.6
17.8
18.0
18.2
18.4
18.6
18.8
19.0
19.2
19.4
19.6
19.8
20.0
20.2



60
61
62
63
64
65
66
67
68
69
70
71
72



20.4

20.6

20.8

21.0

21.2

21.4

21.6

21.8

22.0

22.2

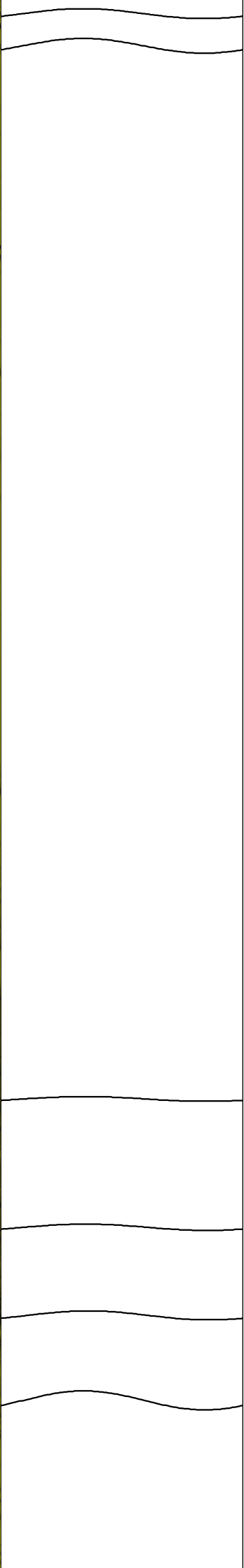
22.4

22.6

22.8

23.0

23.2



73

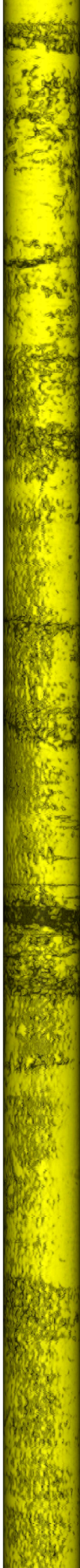
74

75

76

77

78



23.4

23.6

23.8

24.0

24.2

24.4

24.6

24.8

25.0

25.2

25.4

25.6

25.8

26.0



79

80

81

82

83

84

85

86

87

88

89

90

91

92

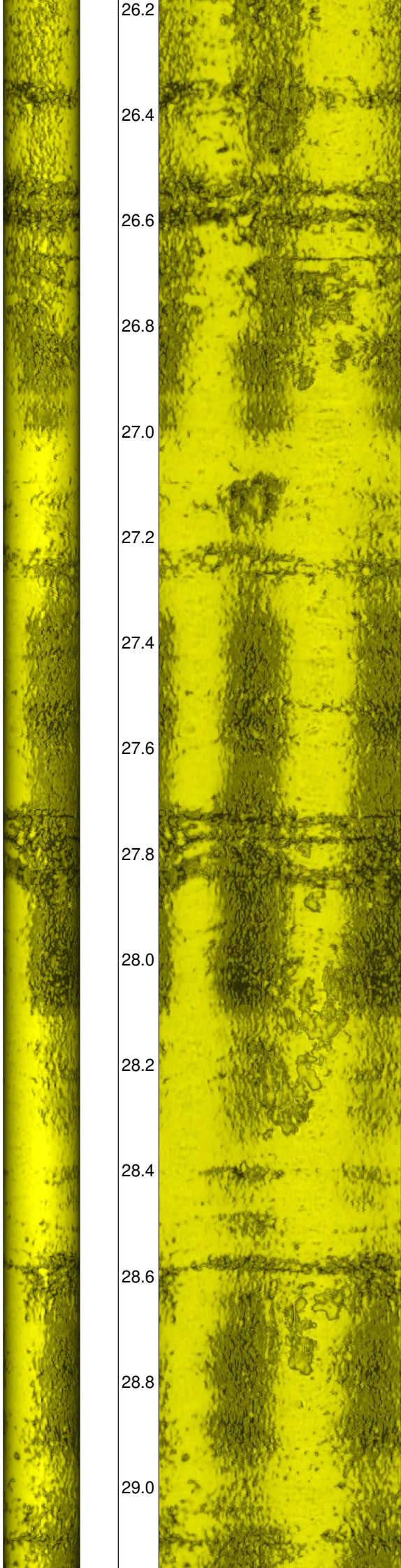
93

94

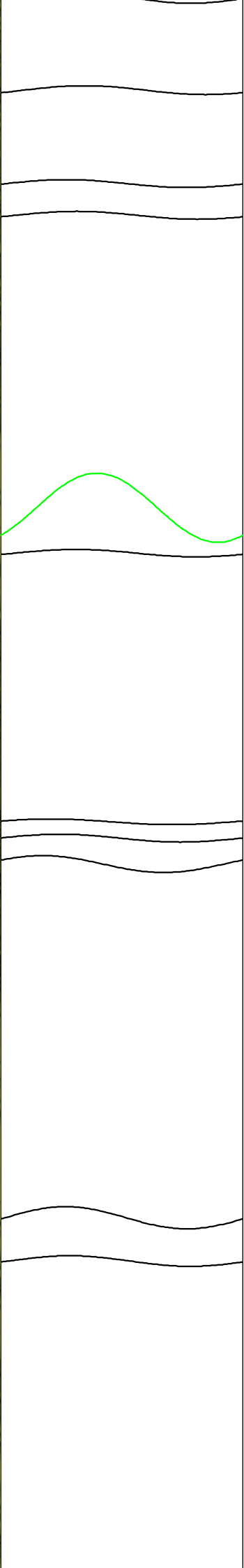
95

96

97



26.2
26.4
26.6
26.8
27.0
27.2
27.4
27.6
27.8
28.0
28.2
28.4
28.6
28.8
29.0



98
99
100
101
102
103
104
105
106
107



29.2

29.4

29.6

29.8

30.0

30.2

30.4

30.6

30.8

31.0

31.2

31.4

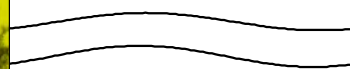
31.6

31.8

32.0



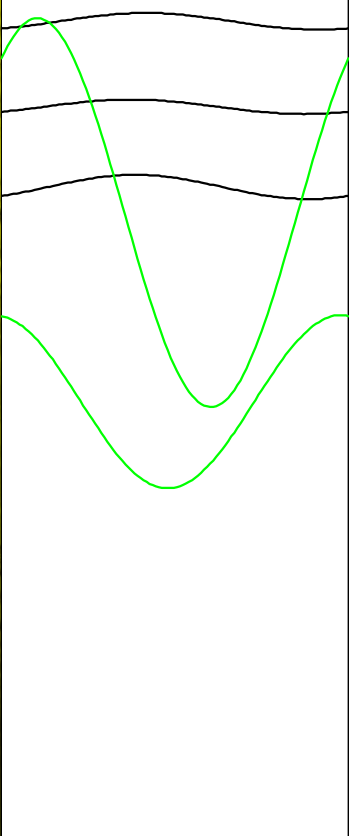
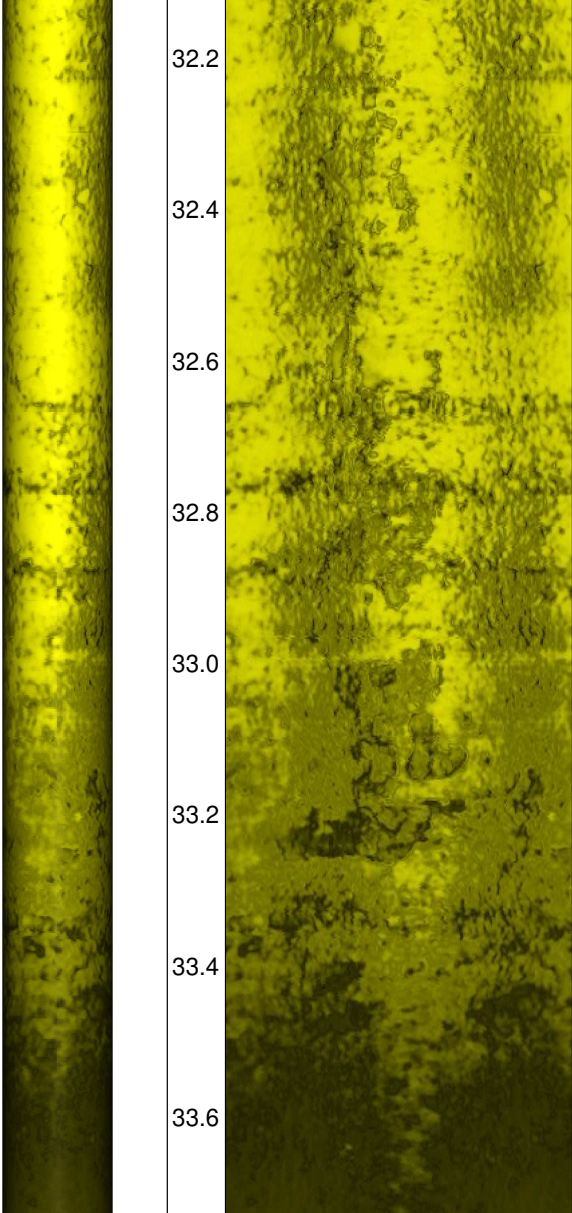
108



109

110

32.2
32.4
32.6
32.8
33.0
33.2
33.4
33.6



111
114
112
113
115