



**Messprogramm**  
ETIBS® - Optischer Bohrlochscanner  
ABF - Akustisches Bohrlochfernsehen

**Erkundungsobjekt**  
Rhein-Main-Link, PFA HE2

**Auftraggeber:** Bohr- ArGe 3-5  
**Bohrung:** P06-Fre-BK-0010  
**Ort:** Frankenberg  
**Auftragsnummer:** e-3679

**Teufenmaßstab**  
**1:10**


**Koordinaten**  
**Rechtswert:**  
**Hochwert:**  
**Höhe ü. NN:**

**Messbezugspunkt:** GOK

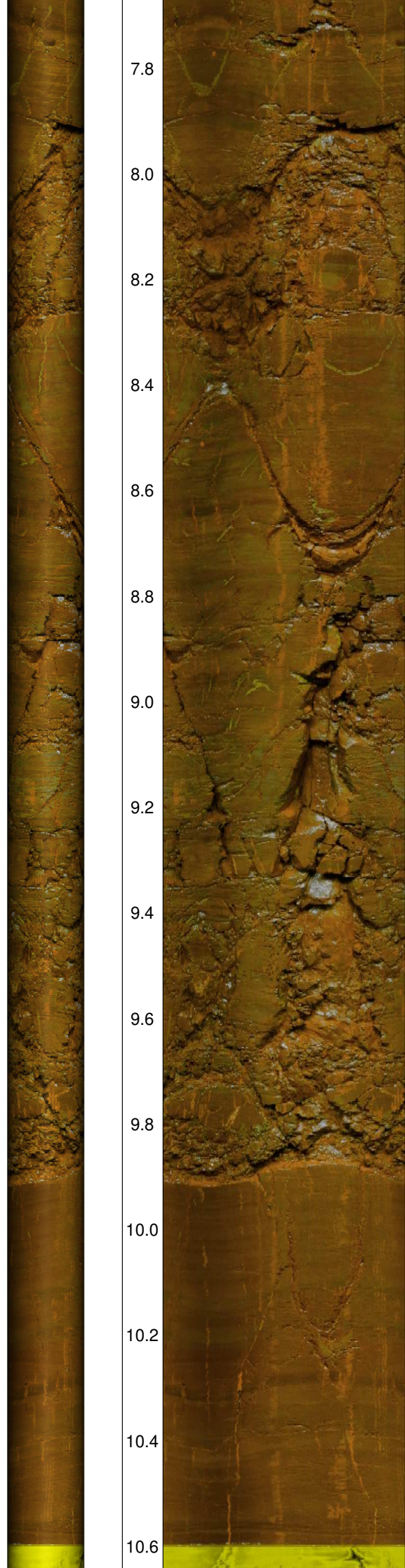
Messdatum:	24.09.2024	Bohrlochdurchmesser:	146 mm
Bohrteufe:	50.00 m (lt. BM)	Richtung der Bohrung:	vertikal
Messintervall:	6.65 m - 49.01 m (42.36 m)	Quelldatei:	Fre-0010.blk / Fre-0010.log
Verrohrung bis:	6.68 m	Messingenieur:	Hr. Newrzella
Wasserstand:	10.60 m	Bearbeiter:	Hr. Barsuhn

**Bemerkungen:** Messintervall ETIBS: 6.65 m - 10.60 m (3.95 m)  
Messintervall ABF: 10.60 m - 49.01 m (38.41 m)

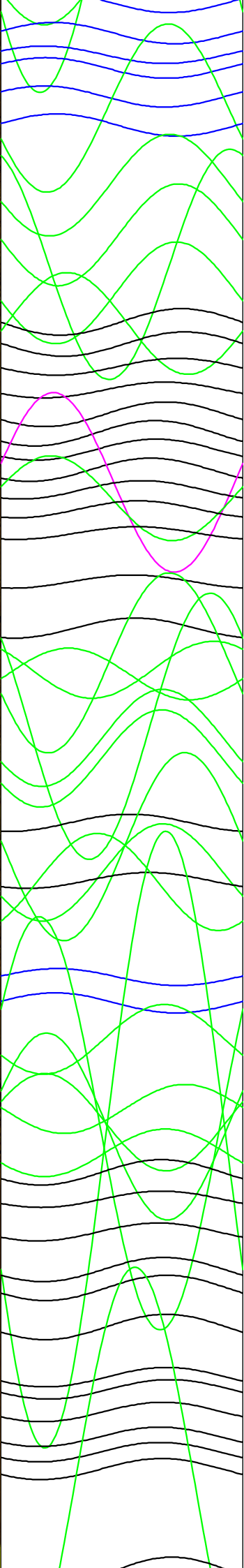
**Trennflächen :** schwarz - Schichtung / Schieferung  
blau - Schrägschichtung  
magenta - Klüfte  
grün - Klüfte nur z. T. erkennbar

Pseudokern 	[m]	Bohrlochabwicklung					Trennflächenabwicklung					Nr.	Bemerkung
		N	O	S	W	N	N	O	S	W	N		





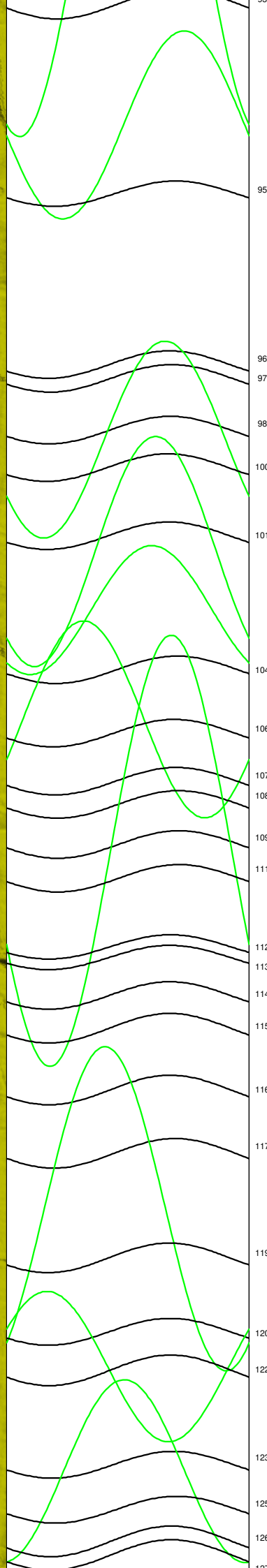
7.8  
8.0  
8.2  
8.4  
8.6  
8.8  
9.0  
9.2  
9.4  
9.6  
9.8  
10.0  
10.2  
10.4  
10.6



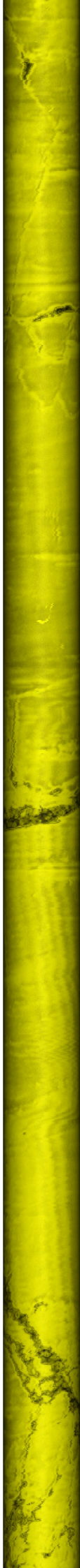
33 28  
34  
35  
36  
37  
39 38  
42  
40  
41  
43  
44 45  
46  
47  
48  
49  
50  
51 53  
52 55  
54  
56  
57  
58  
59 63  
61  
62  
60  
64  
65  
66 67  
69 68  
70  
71  
72 76  
73  
77  
75  
74  
79  
80  
81  
82 78  
83  
84  
85  
86  
87  
88  
89  
90  
91  
93



10.8  
11.0  
11.2  
11.4  
11.6  
11.8  
12.0  
12.2  
12.4  
12.6  
12.8  
13.0  
13.2  
13.4  
13.6



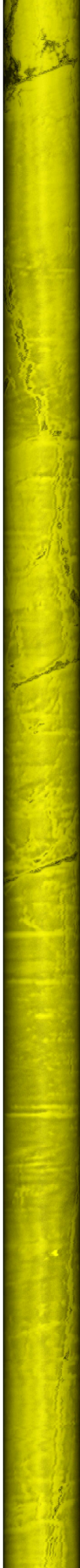
92  
94  
95  
96  
97  
98  
100  
101  
102  
103  
104  
106  
107  
108  
109  
111  
112  
113  
114  
115  
116  
117  
119  
120  
122  
123  
125  
126  
127



13.8  
14.0  
14.2  
14.4  
14.6  
14.8  
15.0  
15.2  
15.4  
15.6  
15.8  
16.0  
16.2  
16.4



127  
128  
129  
130  
131  
133  
134  
135  
132  
136  
137  
138  
140  
139  
141  
142  
143  
144  
145  
146  
147  
149  
150  
151  
148  
152  
154  
155  
156  
153  
159  
157  
161  
162  
160  
163



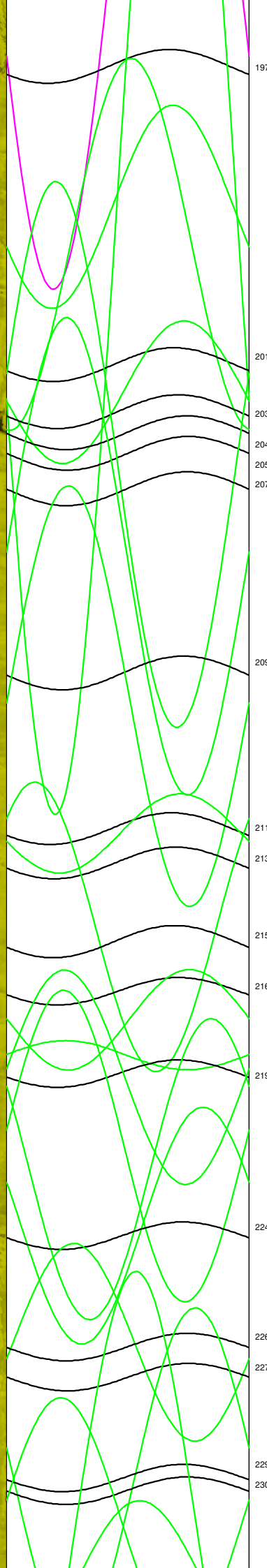
16.6  
16.8  
17.0  
17.2  
17.4  
17.6  
17.8  
18.0  
18.2  
18.4  
18.6  
18.8  
19.0  
19.2  
19.4



164  
165  
166  
168  
169  
170  
171  
172  
173  
174  
177  
175  
178  
176  
179  
180  
182  
183  
181  
184  
185  
186  
187  
188  
189  
192  
190  
191  
193  
194  
196

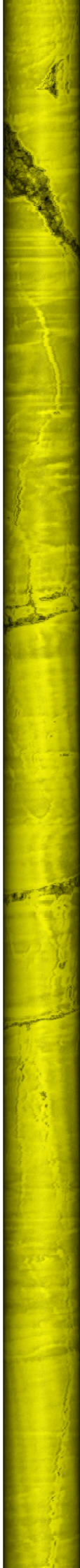


19.6  
19.8  
20.0  
20.2  
20.4  
20.6  
20.8  
21.0  
21.2  
21.4  
21.6  
21.8  
22.0  
22.2  
22.4



197  
199  
201  
203  
204  
205  
207  
209  
211  
213  
215  
216  
219  
222  
224  
226  
227  
229  
230

195  
198  
206  
199  
202  
200  
208  
210  
214  
212  
217  
218  
220  
221  
223  
225  
228  
231

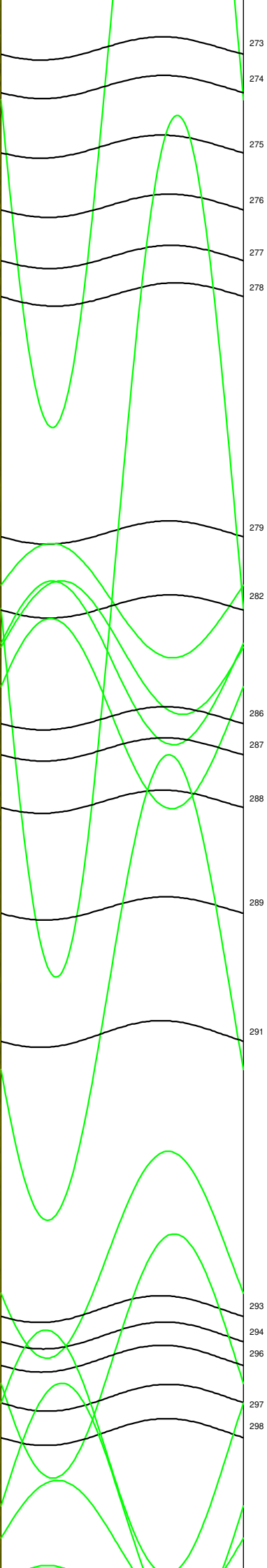
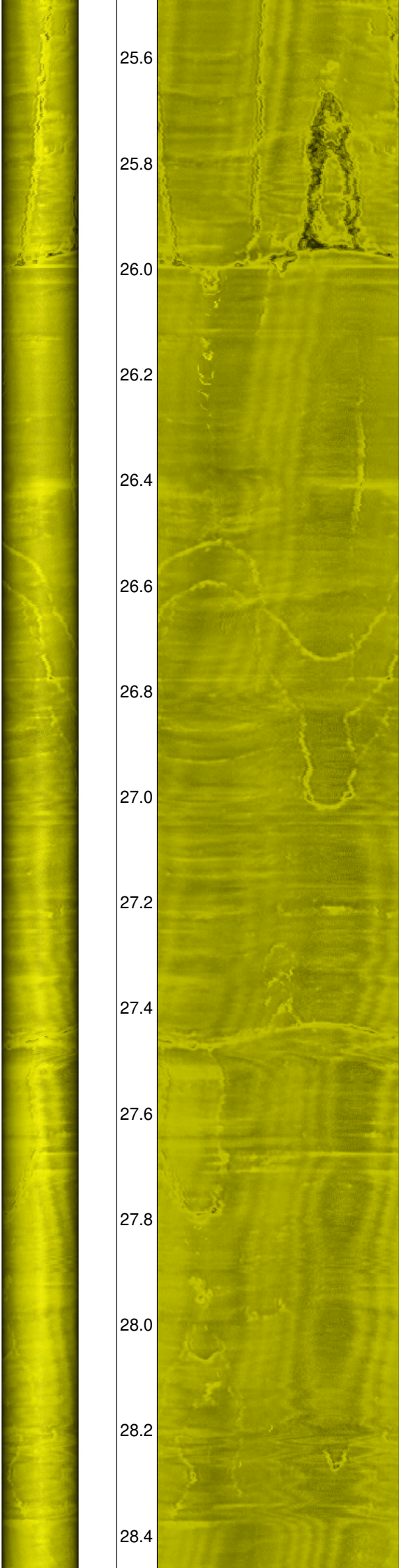


22.6  
22.8  
23.0  
23.2  
23.4  
23.6  
23.8  
24.0  
24.2  
24.4  
24.6  
24.8  
25.0  
25.2  
25.4



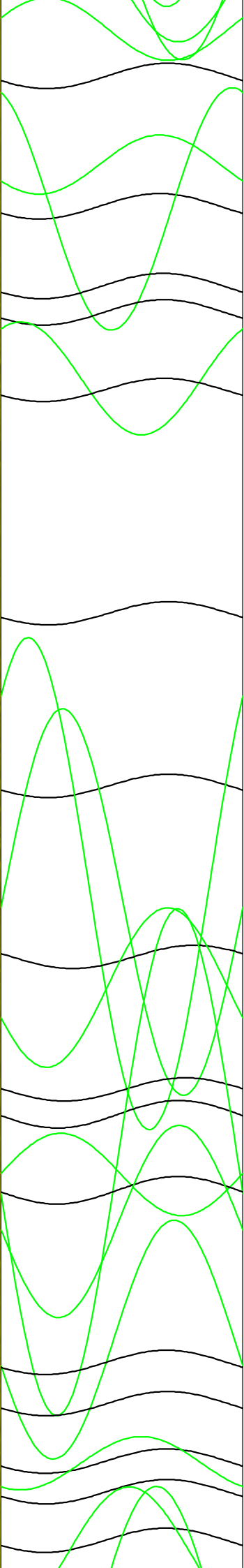
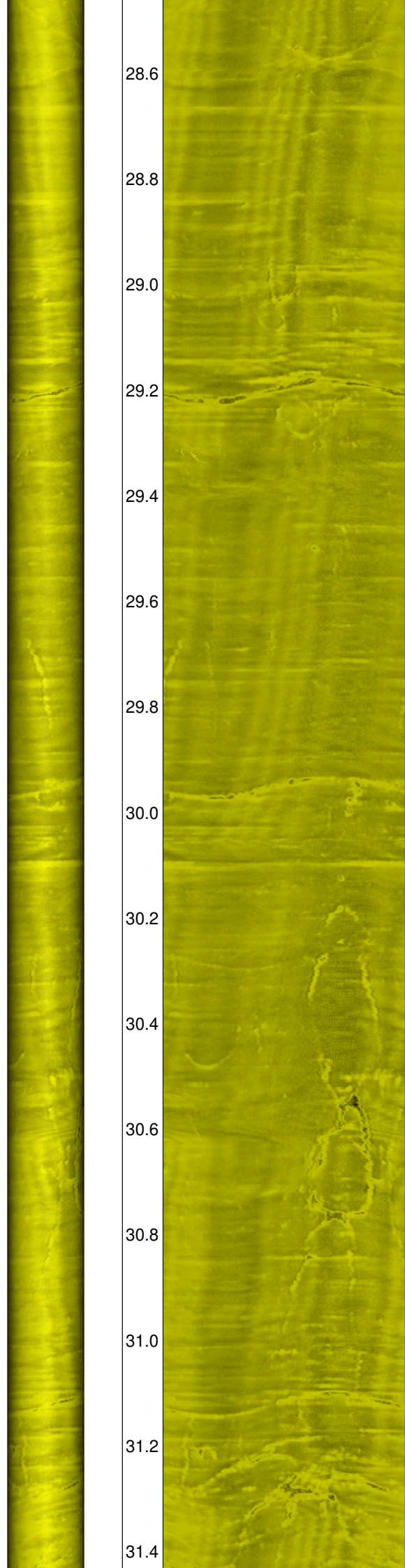
233  
238  
232  
239  
243  
242  
245  
247  
251  
255  
260  
254  
266  
265  
267

25.6  
25.8  
26.0  
26.2  
26.4  
26.6  
26.8  
27.0  
27.2  
27.4  
27.6  
27.8  
28.0  
28.2  
28.4



273  
274  
275  
276  
277  
278  
279  
280  
281  
282  
283  
284  
285  
286  
287  
288  
289  
290  
291  
292  
293  
294  
295  
296  
297  
298  
299  
300  
301

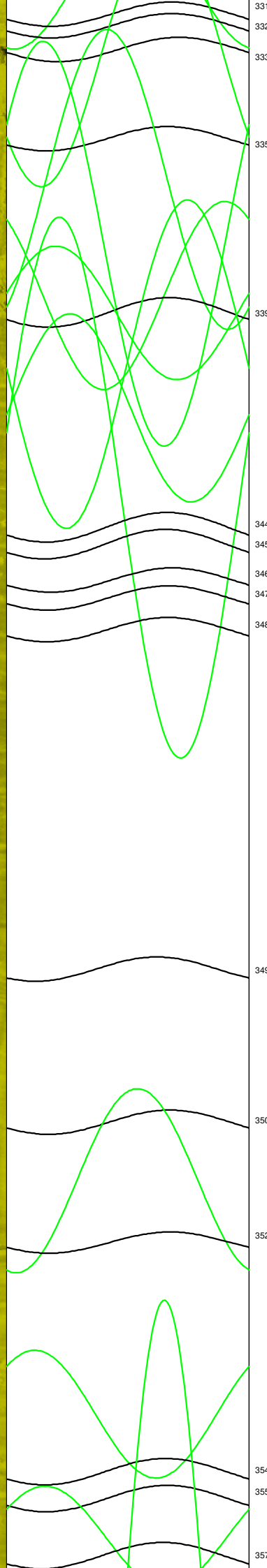
28.6  
28.8  
29.0  
29.2  
29.4  
29.6  
29.8  
30.0  
30.2  
30.4  
30.6  
30.8  
31.0  
31.2  
31.4



302  
303  
306  
304  
305  
307  
308  
309  
310  
311  
313  
312  
314  
315  
316  
317  
318  
320  
319  
322  
323  
325  
326  
328  
327  
329



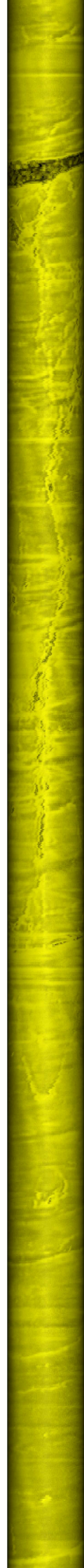
31.6  
31.8  
32.0  
32.2  
32.4  
32.6  
32.8  
33.0  
33.2  
33.4  
33.6  
33.8  
34.0  
34.2  
34.4



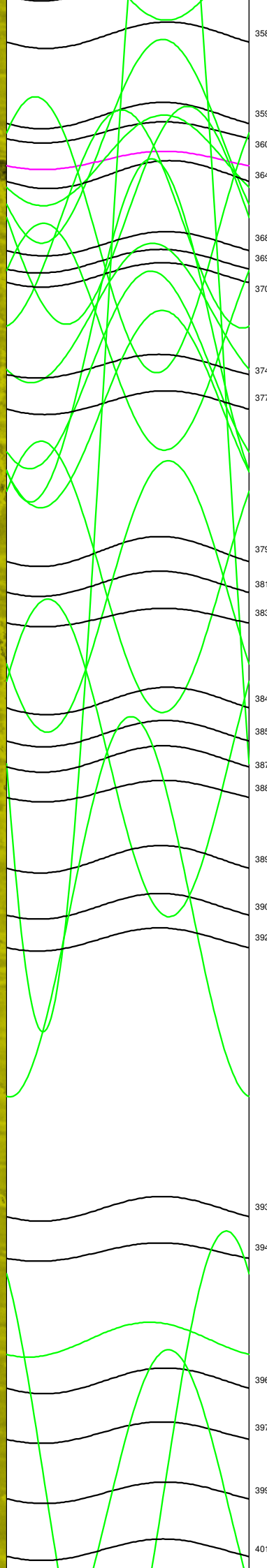
331  
332  
333  
335  
339  
344  
345  
346  
347  
348  
349  
350  
352  
354  
355  
357

330  
337  
334  
338  
340  
336  
341  
342  
343

351  
353  
356



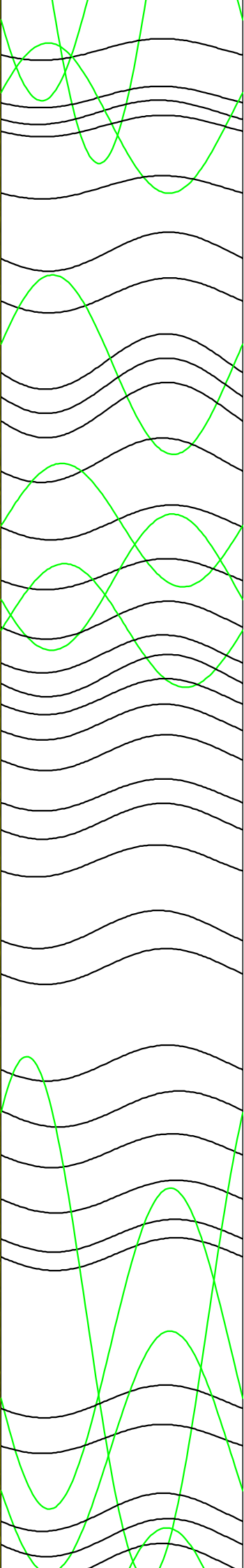
34.4  
34.6  
34.8  
35.0  
35.2  
35.4  
35.6  
35.8  
36.0  
36.2  
36.4  
36.6  
36.8  
37.0  
37.2



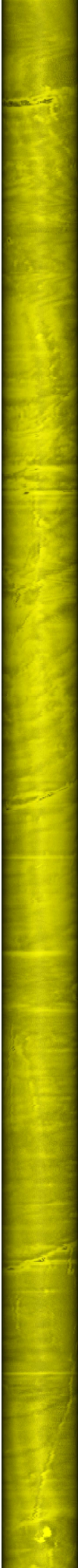
358  
359  
360  
364  
368  
369  
370  
374  
377  
379  
381  
383  
384  
385  
387  
388  
389  
390  
392  
393  
394  
396  
397  
399  
401

367  
362  
363  
361  
365  
373  
366  
371  
375  
378  
372  
380  
382  
386  
376  
391  
398  
395

37.4  
37.6  
37.8  
38.0  
38.2  
38.4  
38.6  
38.8  
39.0  
39.2  
39.4  
39.6  
39.8  
40.0  
40.2

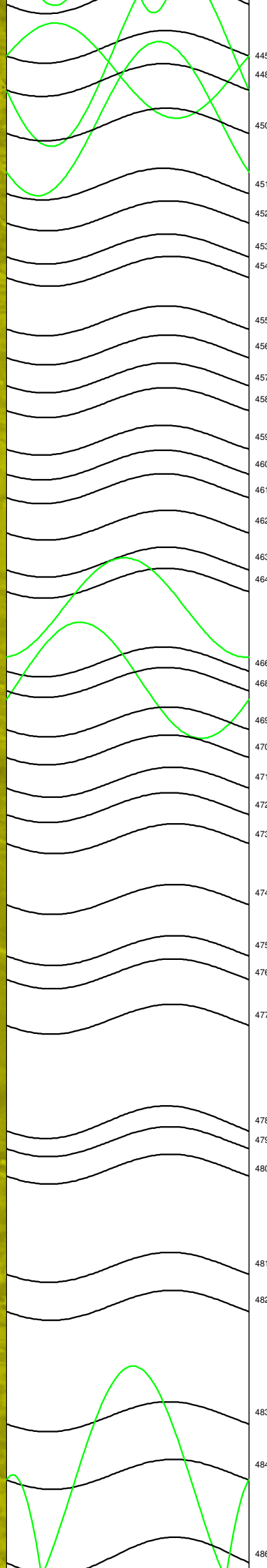


400  
402  
403  
404  
405  
406  
407  
408  
409  
410  
411  
412  
413  
414  
415  
416  
417  
418  
419  
420  
421  
422  
423  
424  
425  
426  
427  
428  
429  
430  
431  
432  
433  
434  
435  
436  
437  
438  
439  
440  
441  
442  
443  
444

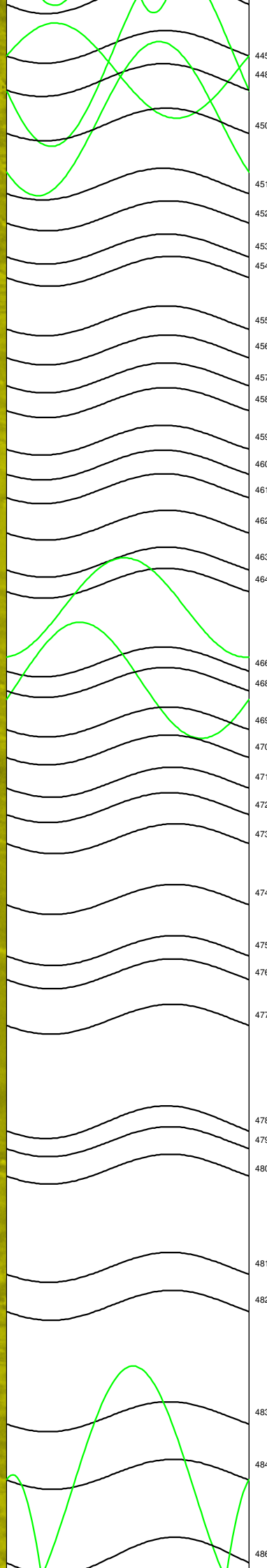




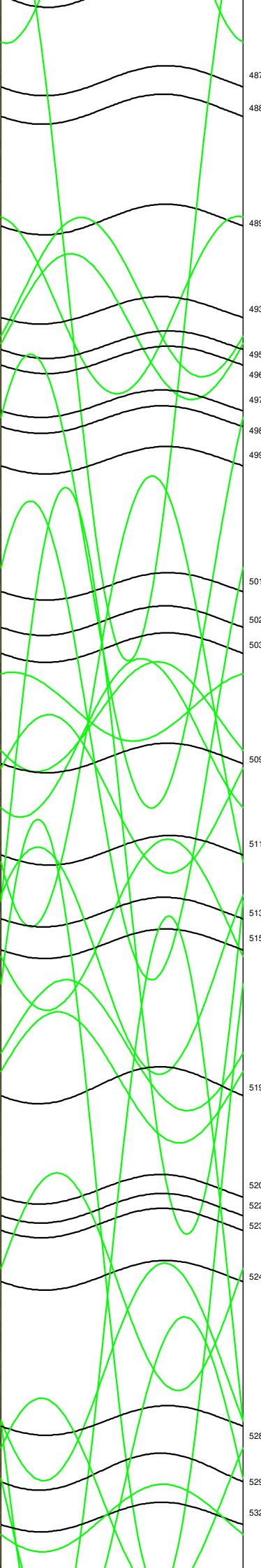
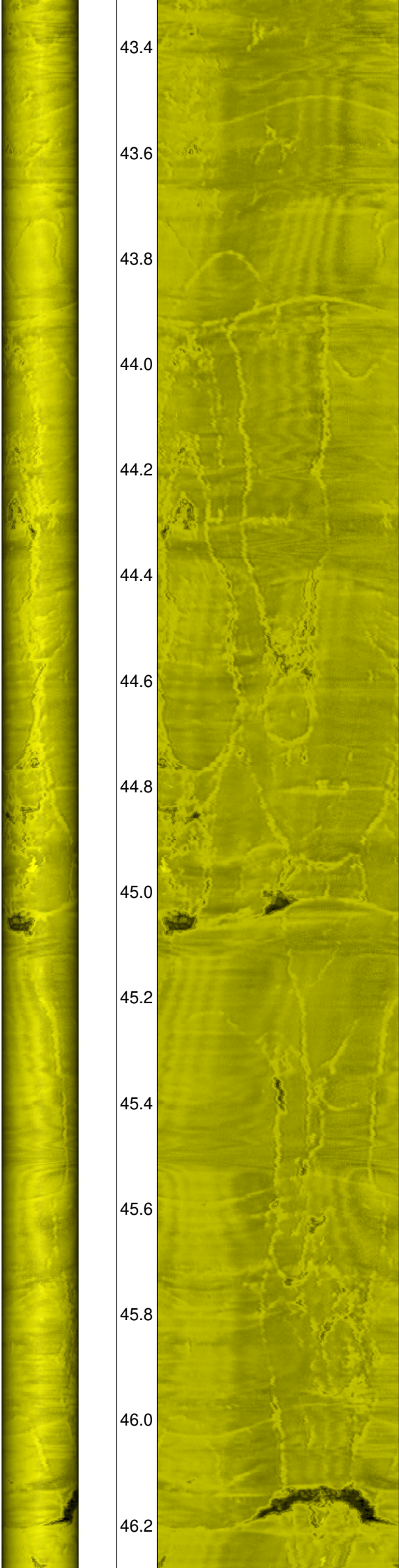
40.4  
40.6  
40.8  
41.0  
41.2  
41.4  
41.6  
41.8  
42.0  
42.2  
42.4  
42.6  
42.8  
43.0  
43.2



447  
448  
449  
450  
451  
452  
453  
454  
455  
456  
457  
458  
459  
460  
461  
462  
463  
464  
465  
466  
467  
468  
469  
470  
471  
472  
473  
474  
475  
476  
477  
478  
479  
480  
481  
482  
483  
484  
486

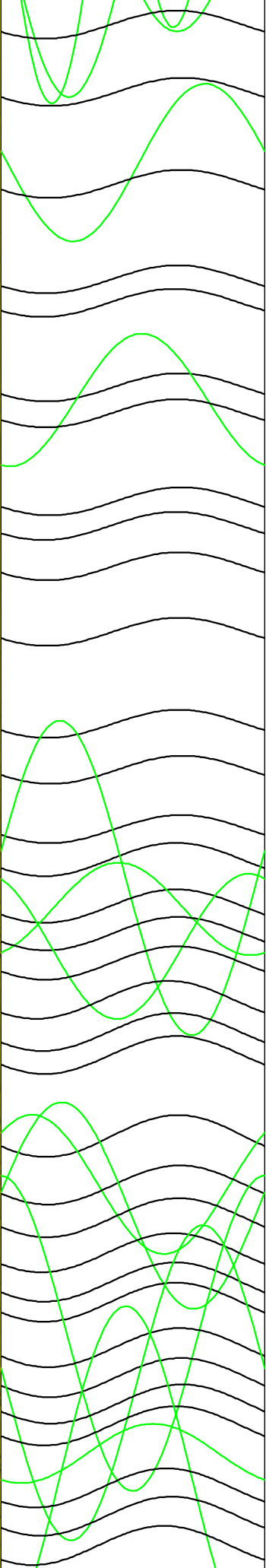
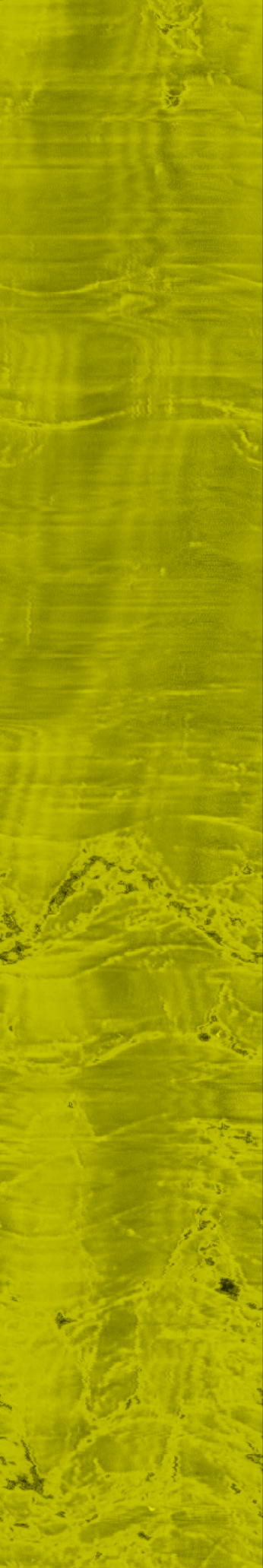
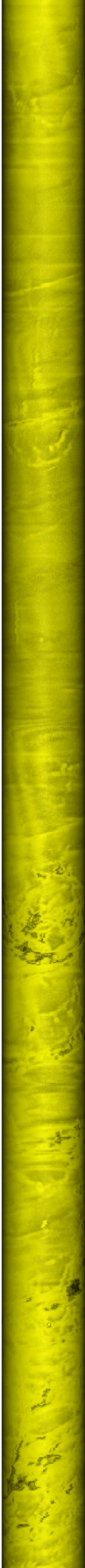


43.4  
43.6  
43.8  
44.0  
44.2  
44.4  
44.6  
44.8  
45.0  
45.2  
45.4  
45.6  
45.8  
46.0  
46.2



485  
487  
488  
489  
491  
492  
493  
494  
495  
496  
497  
498  
499  
500  
501  
502  
503  
505  
506  
507  
509  
511  
512  
513  
514  
515  
516  
517  
518  
519  
520  
521  
522  
523  
524  
525  
526  
527  
528  
529  
530  
531  
532  
533

46.4  
46.6  
46.8  
47.0  
47.2  
47.4  
47.6  
47.8  
48.0  
48.2  
48.4  
48.6  
48.8  
49.0



534  
535  
537  
538  
539  
540  
542  
543  
544  
545  
546  
547  
548  
549  
550  
552  
554  
556  
557  
558  
559  
560  
562  
564  
565  
566  
567  
569  
570  
572  
573  
576  
577  
578

536  
541  
551  
555  
553  
561  
568  
563  
571  
574

End depth<last  
jointnumber