


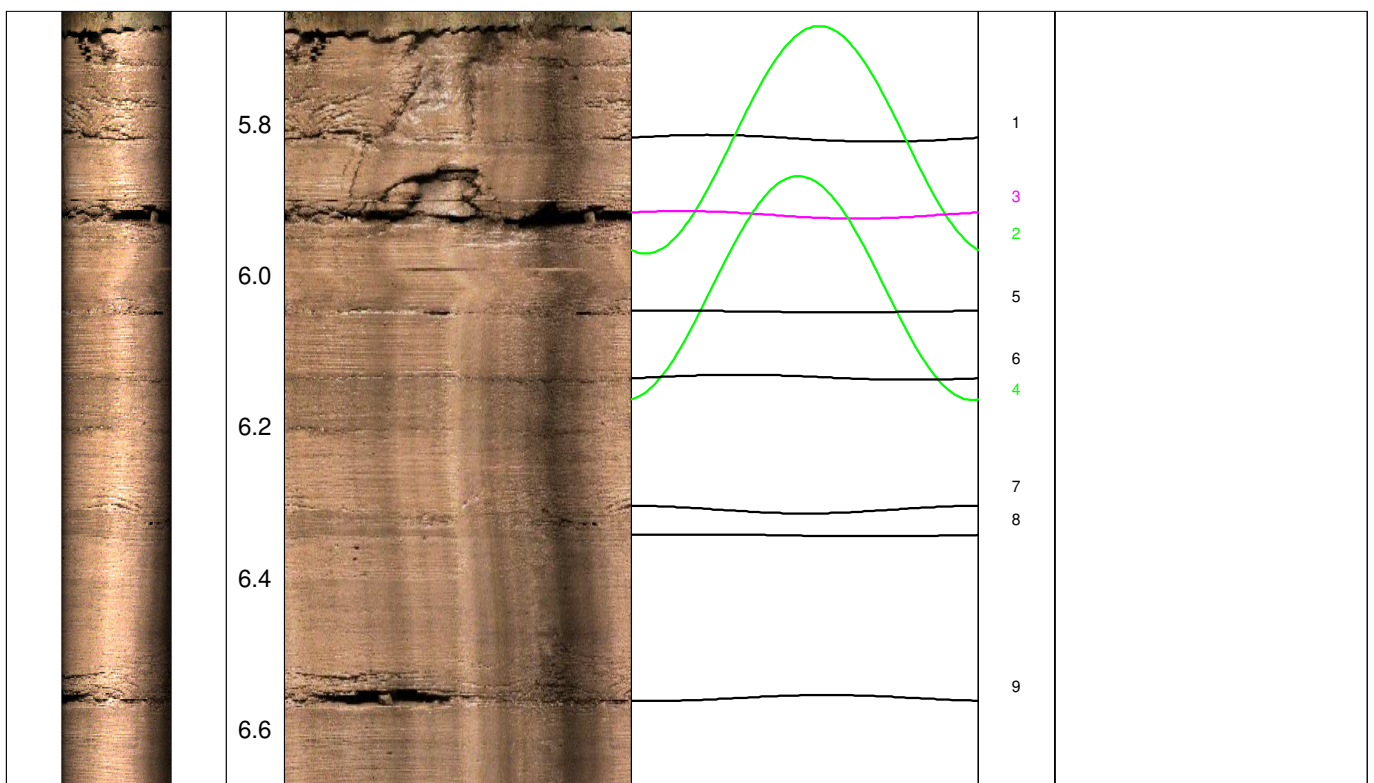


Geotechnisches Ingenieurbüro
Prof. Fecker und Partner GmbH

Messprogramm		Erkundungsobjekt	
ETIBS® - Optischer Bohrlochscanner		Rhein-Main-Link, PFA HE2	
Auftraggeber: Bohr- ArGe 3-5 Bohrung: P06-Bur-BK-0090 Ort: Burgwald Auftragsnummer: e-3679		Teufenmaßstab 1:10 Messbezugspunkt: GOK	Koordinaten Rechtswert: Hochwert: Höhe ü. NN:
Messdatum:	10.02.2025	Bohrlochdurchmesser:	146 mm
Bohrteufe:	40.00 m (lt. BM)	Richtung der Bohrung:	vertikal
Messintervall:	5.65 m - 39.28 m (33.63 m)	Quelldatei:	Bur-0090.blk
Verrohrung bis:	5.67 m	Messingenieur:	Fr. Sagmajster
Wasserstand:	36.20 m	Bearbeiter:	Hr. Barsuhn

Bemerkungen:	
Trennflächen :	schwarz - Schichtung / Schieferung blau - Schrägschichtung magenta - Klüfte grün - Klüfte nur z. T. erkennbar

Pseudokern 	[m]	Bohrlochabwicklung					Trennflächenabwicklung					Nr.	Bemerkung
		N	O	S	W	N	N	O	S	W	N		





6.8

7.0

7.2

7.4

7.6

7.8

8.0

8.2

8.4

8.6

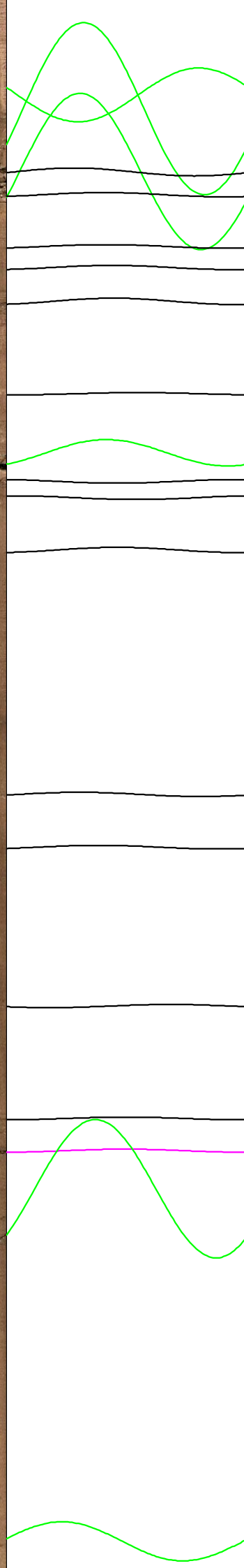
8.8

9.0

9.2

9.4

9.6



10

11

13

12

14

15

16

17

18

19

20

21

22

23

24

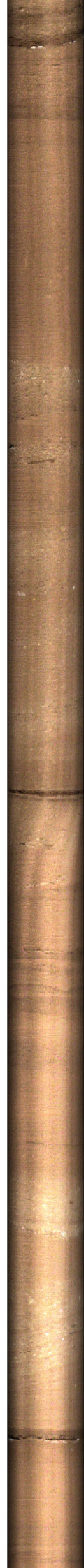
25

26

27

28

29



9.8

10.0

10.2

10.4

10.6

10.8

11.0

11.2

11.4

11.6

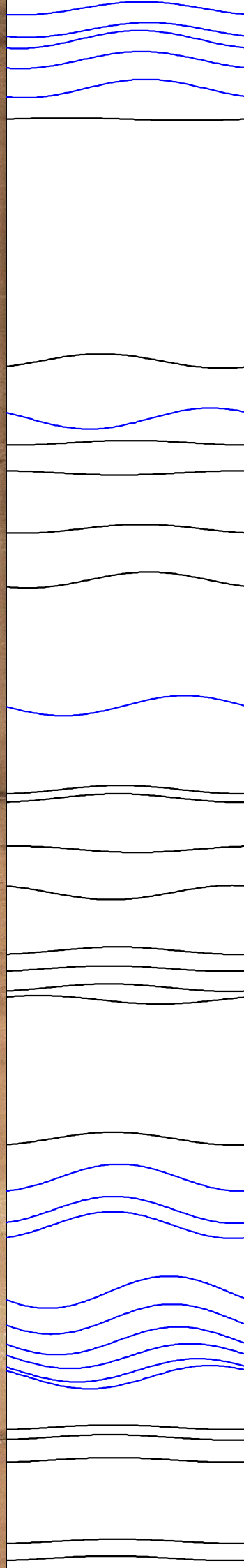
11.8

12.0

12.2

12.4

12.6



30
31
32
33
34
35

36
37
38
39
40
41

42
43
44
45
46
47
48
49
50

51
52
53
54
55
56
57
58
59
60
61
62
63

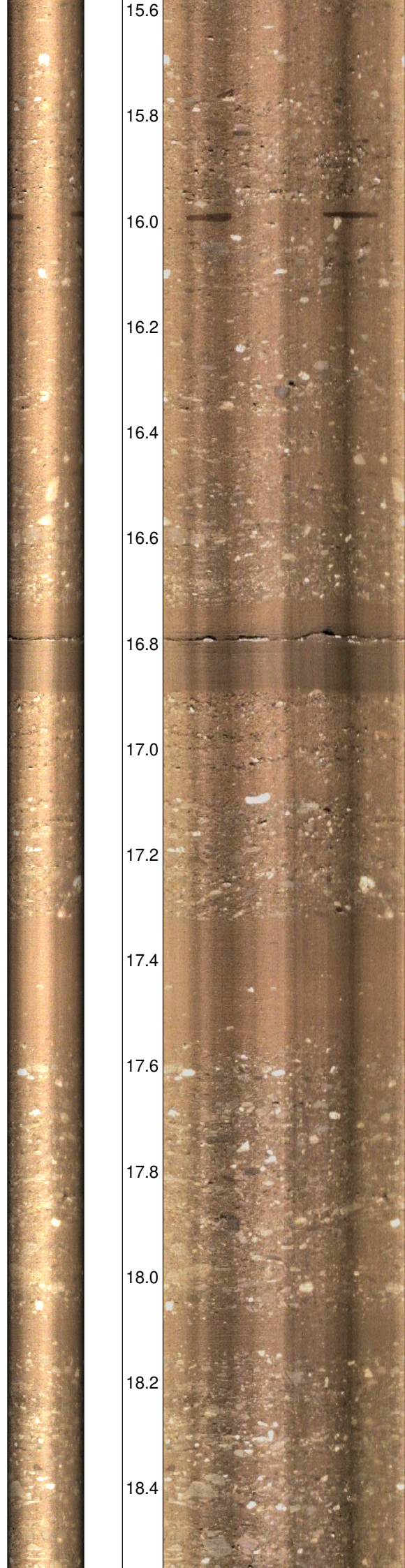
64
65



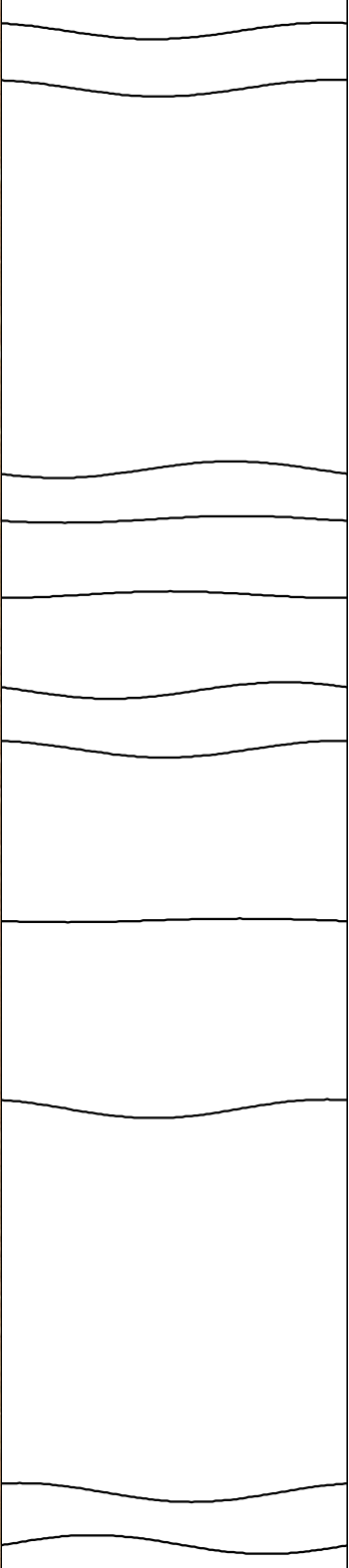
12.8
13.0
13.2
13.4
13.6
13.8
14.0
14.2
14.4
14.6
14.8
15.0
15.2
15.4



66
67
68
69
70
71
72
73
74
75
76
77
78
79
80
81
82



15.6
15.8
16.0
16.2
16.4
16.6
16.8
17.0
17.2
17.4
17.6
17.8
18.0
18.2
18.4



83
84
85
86
87
88
89
90
91
92
93



18.6

18.8

19.0

19.2

19.4

19.6

19.8

20.0

20.2

20.4

20.6

20.8

21.0

21.2

21.4

94

95

96

97

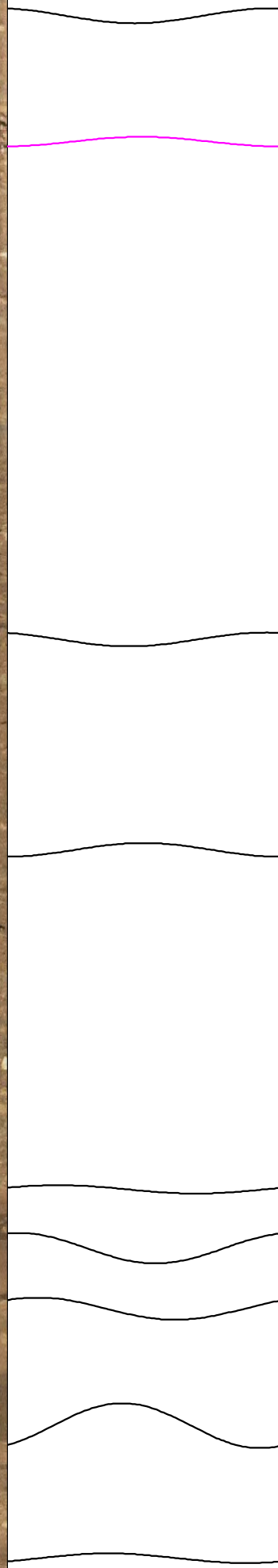
98

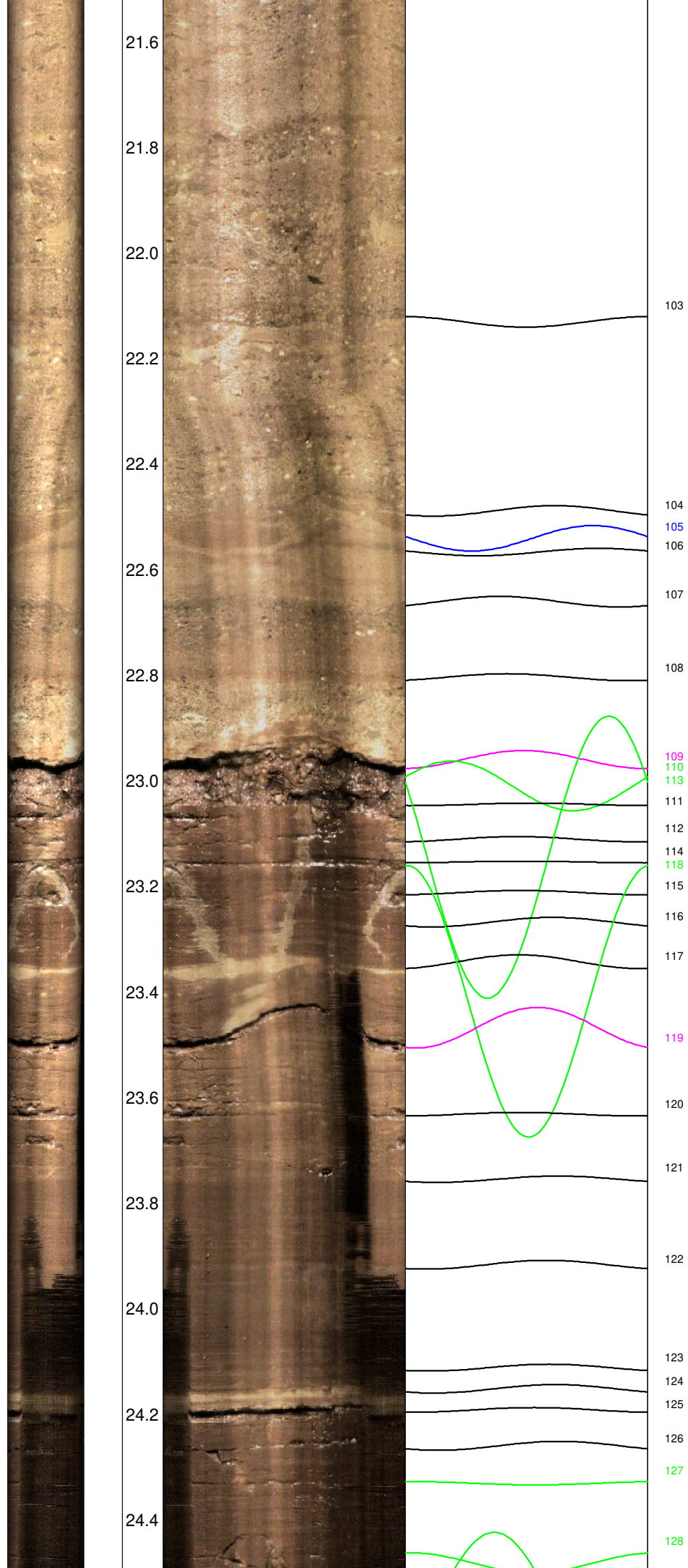
99

100

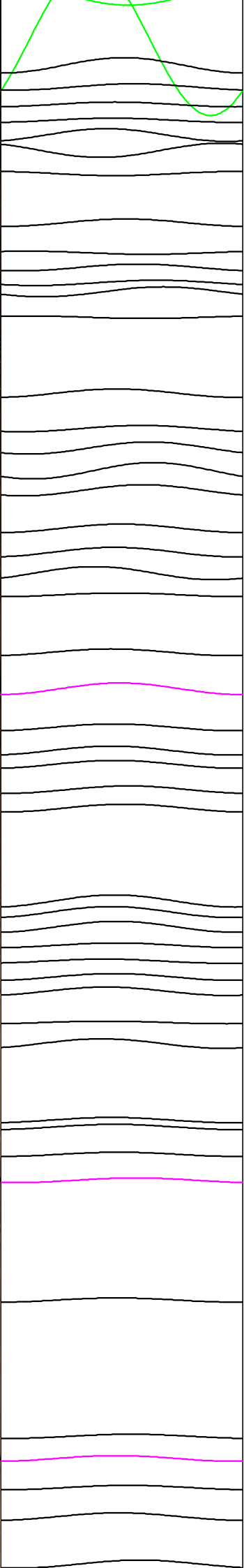
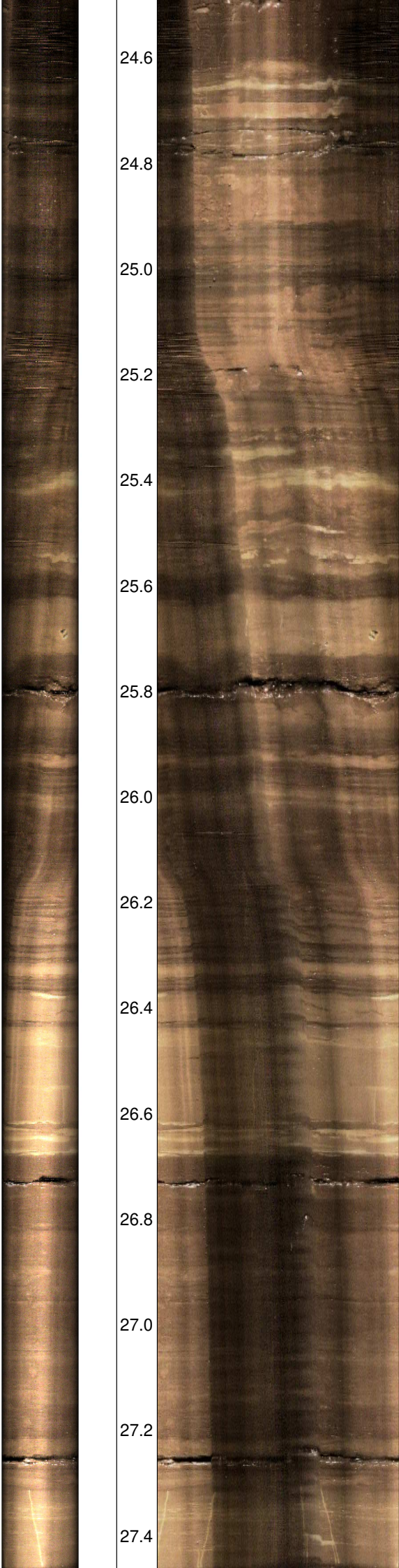
101

102





24.6
24.8
25.0
25.2
25.4
25.6
25.8
26.0
26.2
26.4
26.6
26.8
27.0
27.2
27.4



130
131
129
132
133
134
135
136
137
138
139
140
141
142
143
144
145
146
147
148
149
150
151
152
153
154
155
156
157
158
159
160
161
162
163
164
165
166
167
168
169
170
171
172
173
174
175
176
177



27.6

27.8

28.0

28.2

28.4

28.6

28.8

29.0

29.2

29.4

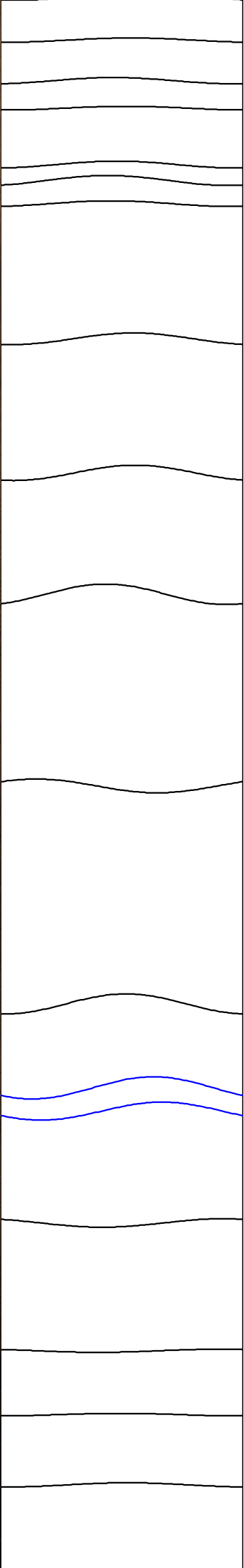
29.6

29.8

30.0

30.2

30.4



178

179

180

181

182

183

184

185

186

187

188

189

190

191

192

193

194



30.6

30.8

31.0

31.2

31.4

31.6

31.8

32.0

32.2

32.4

32.6

32.8

33.0

33.2

33.4



195

196

197

199

198

200

201

202

203

204

205

206

207

208

209

210

211

212

213

214

215

216

217

218

219

220

221

222

223

224

225

226

227

228

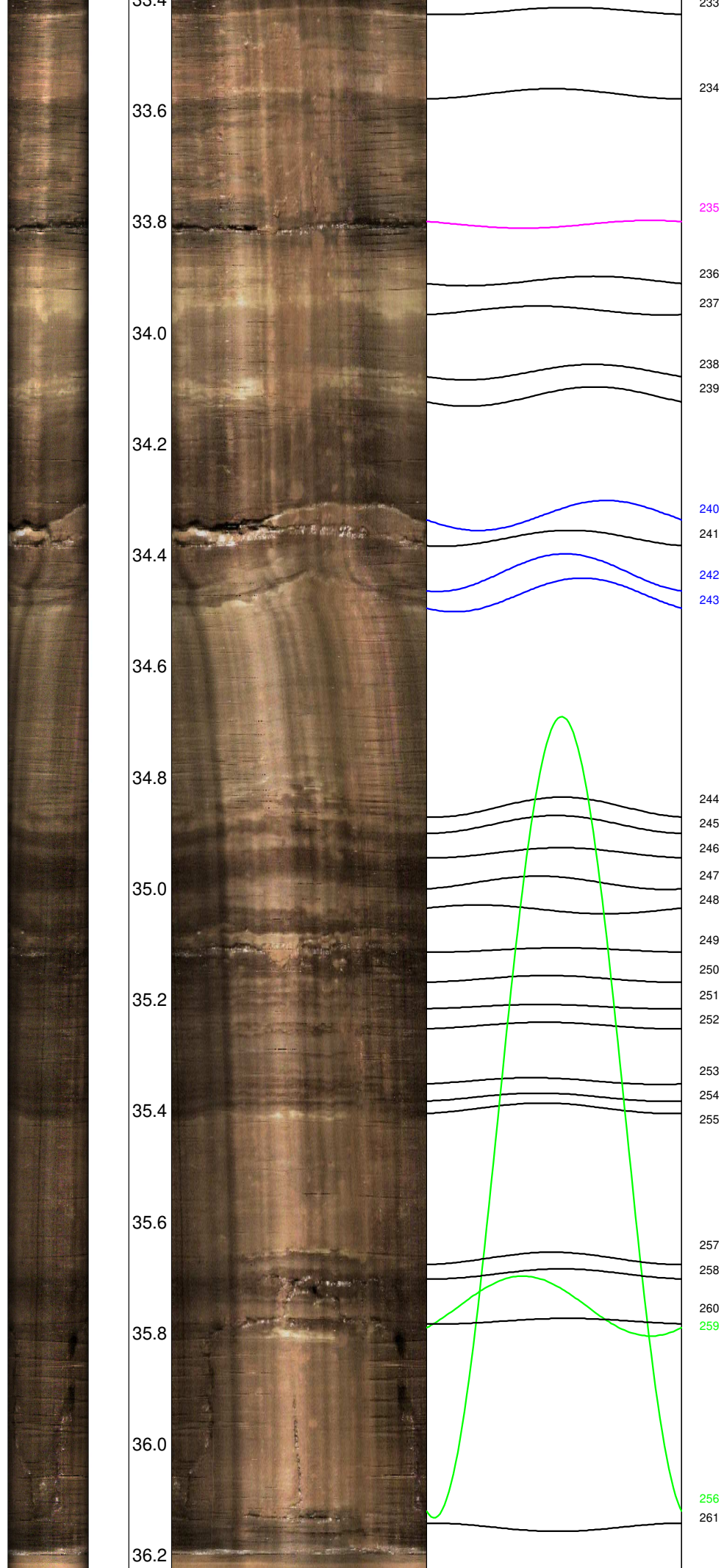
229

231

230

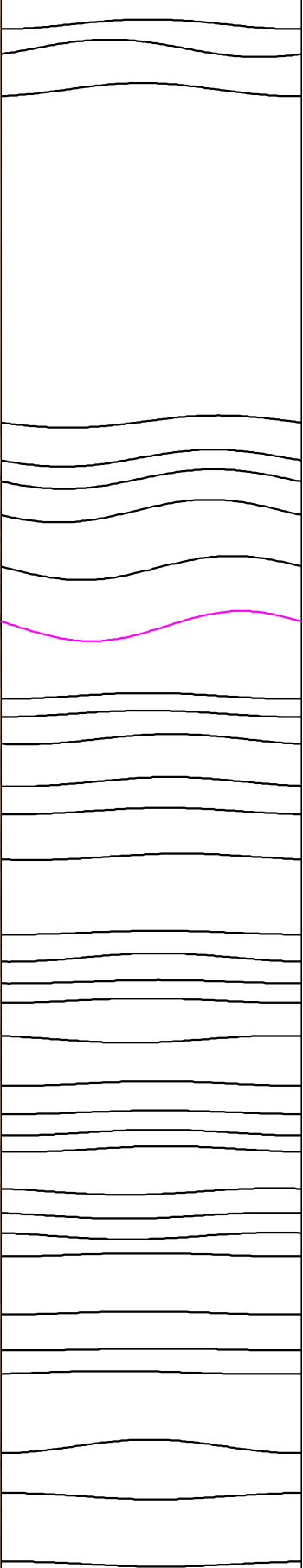
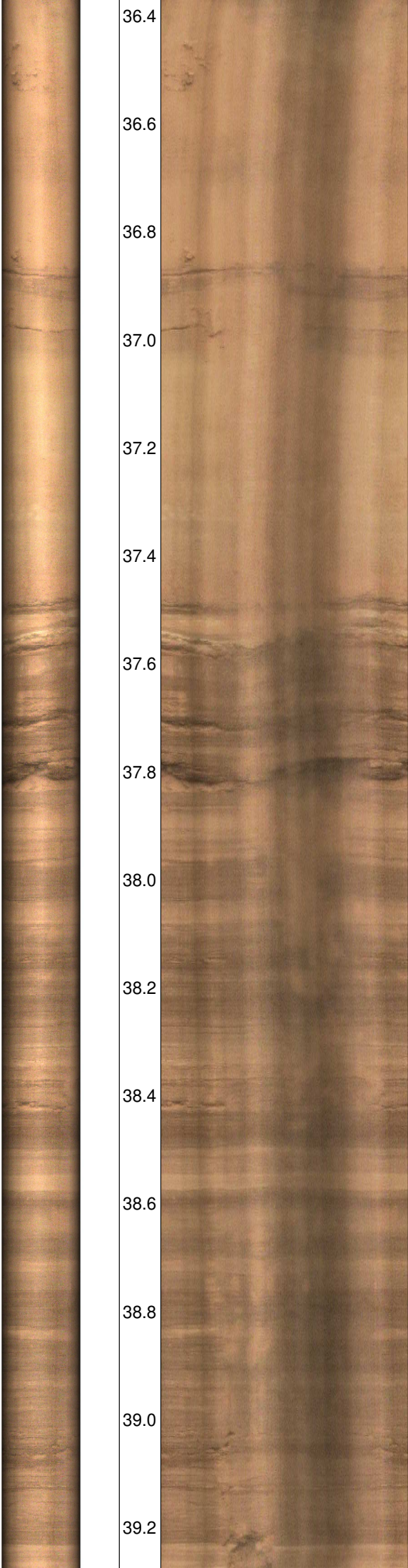
232

233



Wasserspiegel

36.4
36.6
36.8
37.0
37.2
37.4
37.6
37.8
38.0
38.2
38.4
38.6
38.8
39.0
39.2



262
263
264
265
266
267
268
269
270
271
272
273
274
275
276
277
278
279
280
281
282
283
284
285
286
287
288
289
290
291
292
293
294
295